

Metro Transit TOD Public Parcel Map User Friendly Guide



What is the TOD Public Parcels Map?

Metro Transit's [TOD Office](#) has developed a new, interactive ArcGIS Online tool that identifies publically-owned land along active and pending transitways in the Minneapolis – St. Paul region. This guide will explain a few of the map's many uses, show you how to access the map, and provide a brief tutorial of how to use some of its basic features.



Click here to access the map.

What can the Map be used for?

The tool is helpful for professionals as well as anyone interested in viewing all public properties near transitways in the Twin Cities Metro Area. Potential professional users might be **developers** interested in new development opportunities; **public agency staff** along existing and planned LRT and BRT lines; and **planning and public finance consultants** advising cities on comprehensive corridor and small area plans. The Map is designed to be easily accessible and useable for non-GIS users as well as experienced professionals.

Note: The source data for the Map is tax parcel data created at the County level; Metro Transit is not responsible for the accuracy or completeness of the data. Additionally, the Map represents ALL parcels owned by public agencies, which may or may not be open to (re)development. Contact your local jurisdiction or the [TOD Office](#) for more assistance.

How can I access the TOD Public Parcels Map and data?

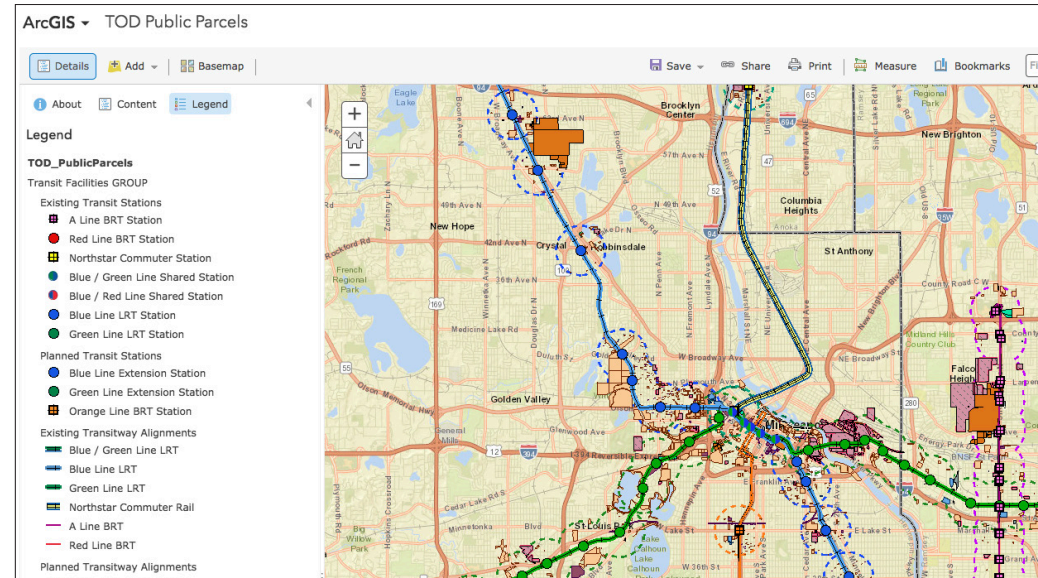
Anyone can access the ArcGIS tool and data – no account or fee is required! Follow one of three options below to access the map and data:

1. **No ArcGIS Online Account:** Simply click this [link](#) and open the web-based map.
2. **Create a free ArcGIS Online Account to perform analysis and download maps:** In order to view data tables, and to create, save and share your own maps, follow the steps below:
 1. Create a [free account](#).
 2. Open the [TOD Public Parcels Map](#).
3. **Download the GIS data for ArcGIS Desktop software:** If you are interested in downloading the data to use within ArcGIS Desktop software, navigate here: [Metropolitan Council Transitways; Publicly Owned Parcels \(Pilot Project\) - Resources - Minnesota Geospatial Commons](#)

Using the Map

Opening and Viewing the Map

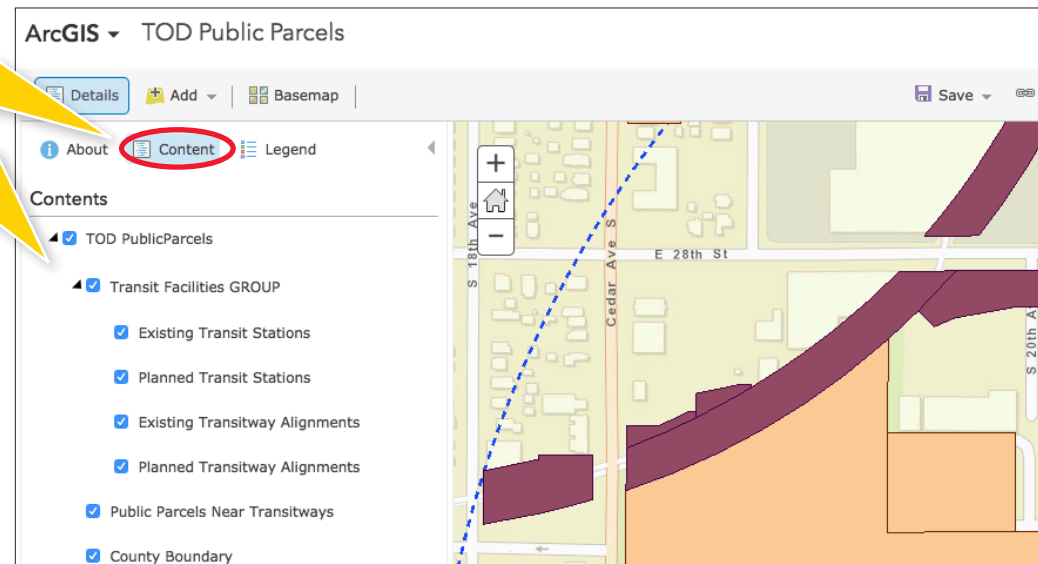
1. Upon opening the map your screen should look similar to the image at the right. The legend on the left provides details for all the data depicted on the map.



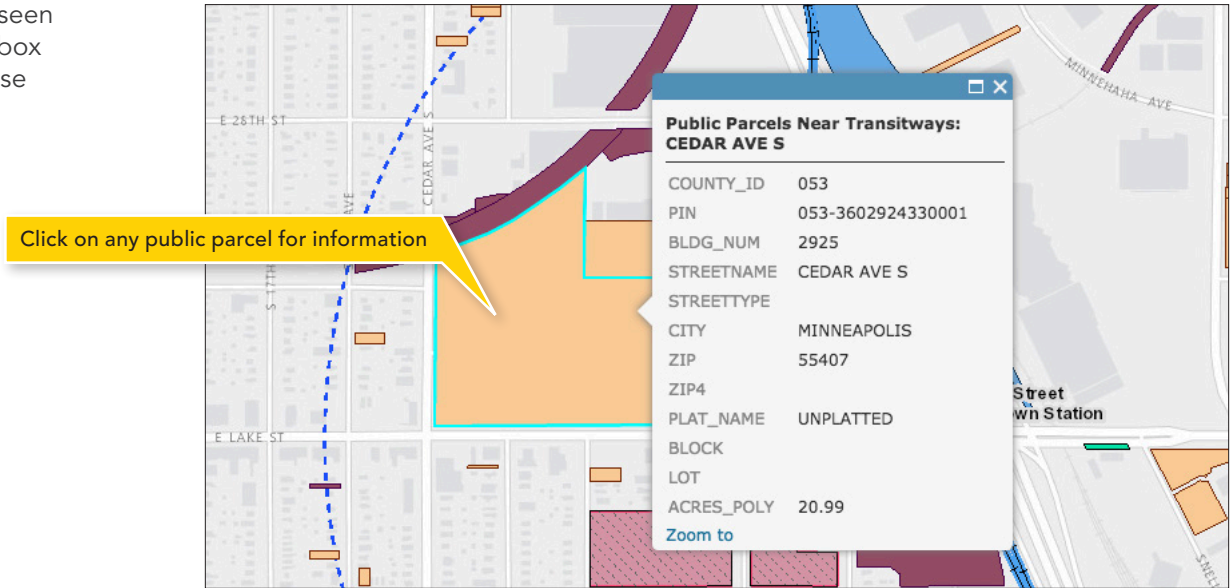
2. If you wish to simplify the map, various layers can be removed. Then select "contents" on the upper left side of the window (see image at the right). A list of the various layers will appear. Each can be turned on or off by checking its respective box.

1. Select "Content."

2. Turn layers on and off here.

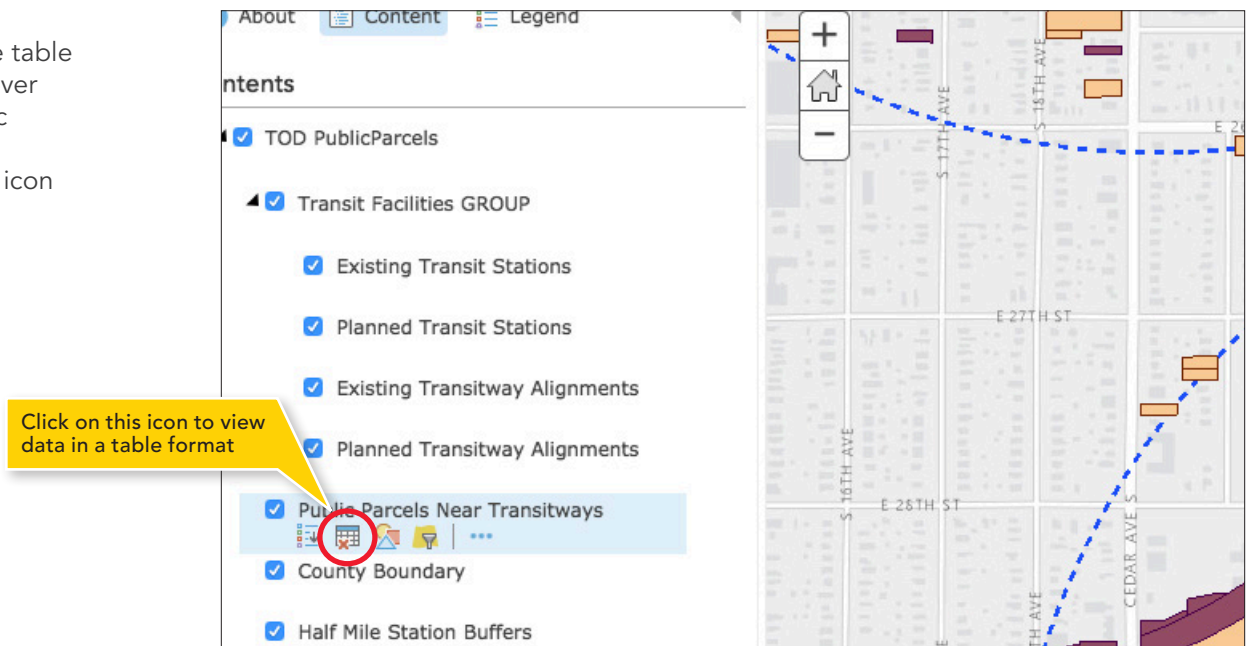


- Information on a particular property can be seen by clicking on the property itself. A pop-up box will display information such as the current use and acreage.



Viewing Data in Table Format

- Data can be presented in a table format in addition to the map layout. To bring up the table of a particular data set, hover your cursor over the data set's name; in this example "Public Parcels Near Transitways." A few icons will appear below the name. Click on the table icon as shown at the right.



2. Some of the data sets are quite large and the tables can be difficult to sort through. To simplify things, select table options and then filter.

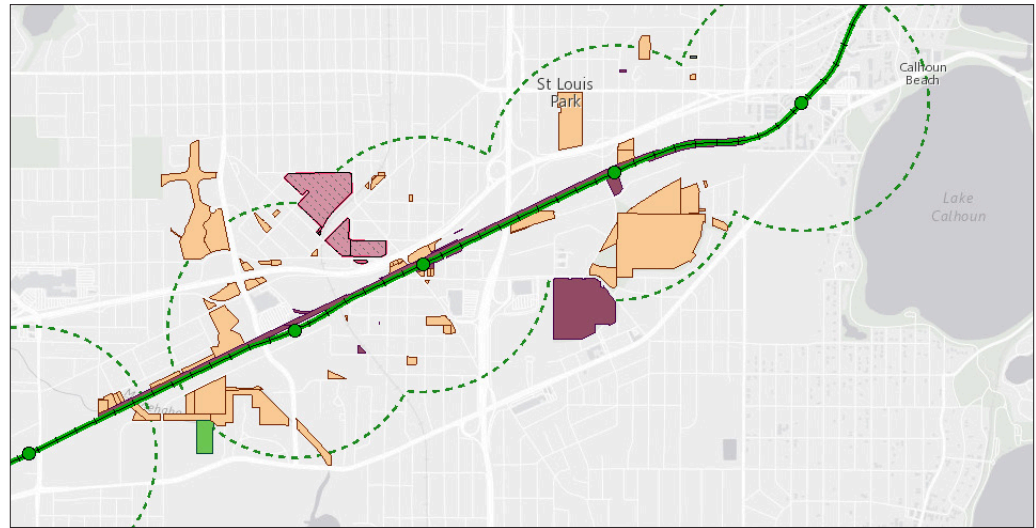
The screenshot shows a map of Minneapolis with several parcels highlighted in purple. Below the map is a table of public parcels. A yellow callout box points to the 'Table Options' menu, which includes a 'Filter' option.

CITY	ZIP	ZIP4	PLAT_NAME	BLOCK	LOT	AREA	PERCENT
ROBBINSDALE	55422		PARKERS 1ST ADDN TO ROBBIN PARK	001			0.00
ROBBINSDALE	55422		AUDITOR'S SUBD. NO. 179		045		0.00
ROBBINSDALE	55422		HOIBY ADDN	001	001	0.87	0.00

3. After clicking "Filter," a box similar to the one seen below should appear. To view a subset of the data, select a variable to search and enter the search terms. For example, if you wanted to view only the properties in St. Louis Park, you would select "City" and then search for "St. Louis Park" as seen at the right.

The screenshot shows a dialog box titled "Filter: TOD_PublicParcels - Public Parcels Near Transitways". The dialog has a "Create" tab and a "Filter" tab. The "Filter" tab is active, showing a search expression: "CITY is St. Louis Park". The dialog also includes options to "Add another expression" and "Add a set", and buttons for "APPLY FILTER" and "CLOSE".

- Applying the filter should bring up a screen similar to what is seen at the right. Notice that only those properties in St. Louis Park are displayed on the map and in the table. *Note: To remove filter, once again click "Table Options," "Filter," and then "Remove Filter."*

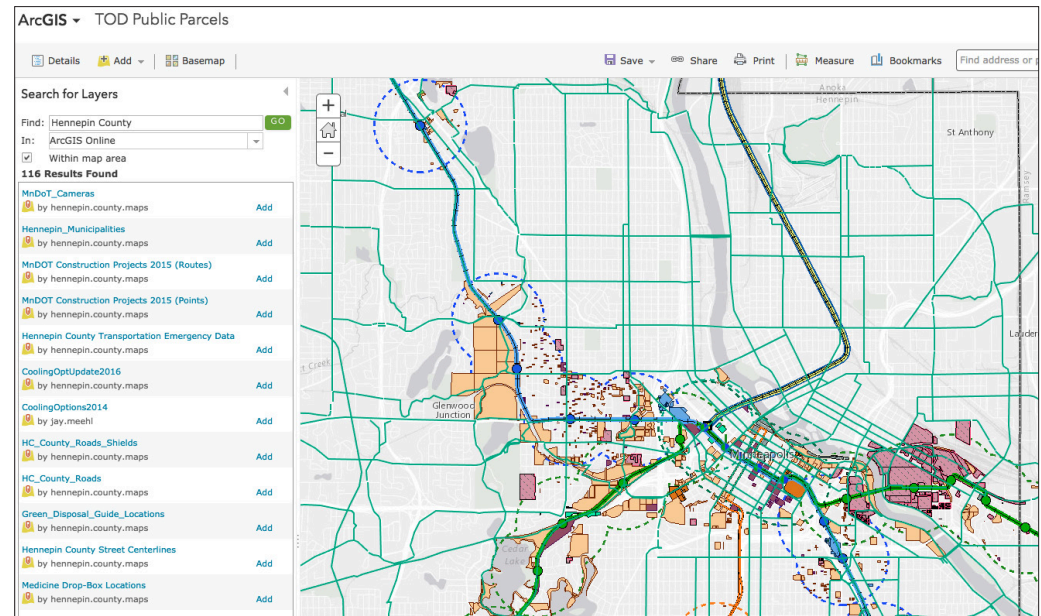


Adding Additional Data*

- One of the most useful features of GIS is the ability to access nearly unlimited amounts of data that other users have created. To do this, select "Add" in the top left corner. This will bring up a drop-down menu. Select "Search for Layers." To search all ArcGIS Online data, select "ArcGIS Online" under the "In:" drop down menu.

*Adding additional layers of data requires an ESRI ArcGIS account.

2. From the Add Layers screen you can search through thousands of data sets covering every region of the globe. Since our focus is on public properties in the Twin Cities, perhaps you would like to see which properties are near designated bike routes. In the search bar, type in “Hennepin County.” This should ensure that all the layers you are looking at are applicable to one County. Scroll down until you find “Hennepin County Bikeway System” and select “Add.” You should now see a map of all area bikeways similar to what is seen at the right. A similar process can be repeated for nearly endless amounts of data, whether it is grocery stores, hospitals, or property values.



Additional questions or TOD Public Parcel Map feedback?

- **TOD Public Parcel Map:** The Metro Transit TOD Office welcomes any additional questions about the TOD Public Parcel Map, development opportunities and/or feedback on the usability and content of the Map. If applicable, please contact the TOD Office at tod@metrotransit.org.
- **ArcGIS Online:** Questions about ArcGIS Online may be answered by visiting [ArcGIS Online FAQ](#).