

METRO Orange Line Update

Transportation Accessibility Advisory Committee

January 25, 2017

Christina Morrison, Project Manager

1. Orange Line background
2. Typical station platform
3. Operations of existing stops & stations
4. Small table discussions, 25 minutes each
 - Lake Street Station (Max & Derek)
 - 66th Street Station & 76th Street Station (Natalie & Rebecca)
 - 98th Street Station & Nicollet Avenue Station (Christina)
5. Report back & next steps

METRO Orange Line

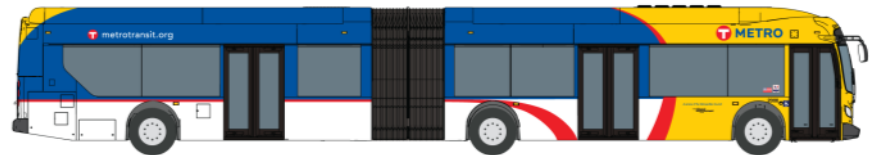
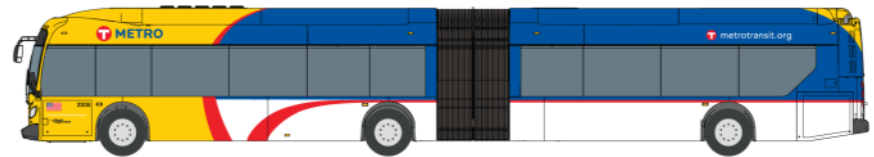


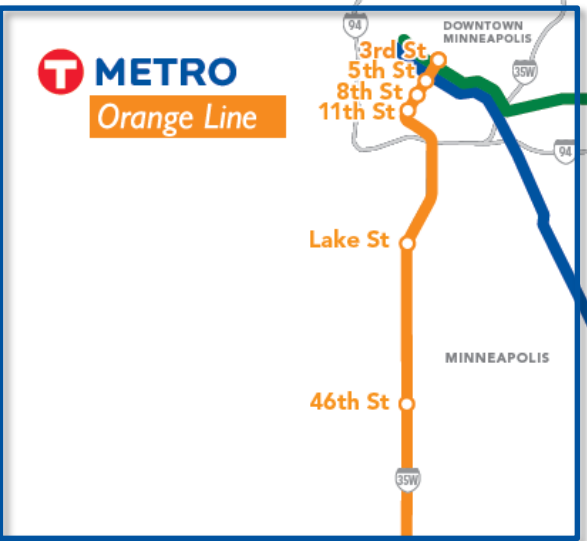
- Most heavily-traveled express bus corridor – over 14,000 existing bus riders each weekday
- Improvements in access, comfort, and technology
- Better service for...
 - all-day, evening, and weekend markets
 - non-downtown trips
 - access to 30,000 suburban jobs

Orange Line Service



- 17 miles, 12 Stations
- 10-minute service during peak
- 15-minute service midday and night
- Service 20 hours a day, 7 days a week
- 12 low-floor, 3-door METRO buses
- Design:
 - Completed 30% design
 - Reinitiated Lake Street design
- Construction starts in 2017
- Open for service in 2019





Minneapolis Stations Operations & Policy Focus

- Integrating Orange Line into Marq2 operations
- Lake Street Station wayfinding & bus operations
- Improving wayfinding and signage at 46th Street Station

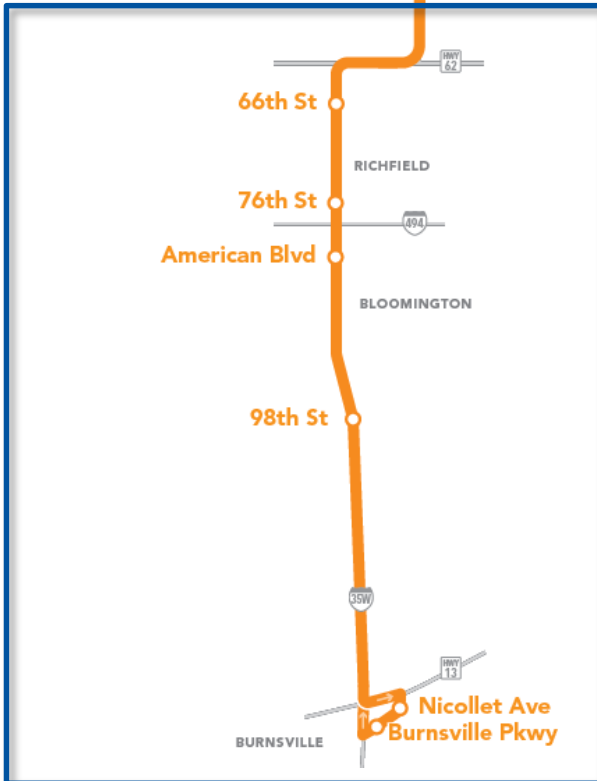




Lake St

46th St

MINNEAPOLIS



66th St

76th St

American Blvd

98th St

RICHFIELD

BLOOMINGTON

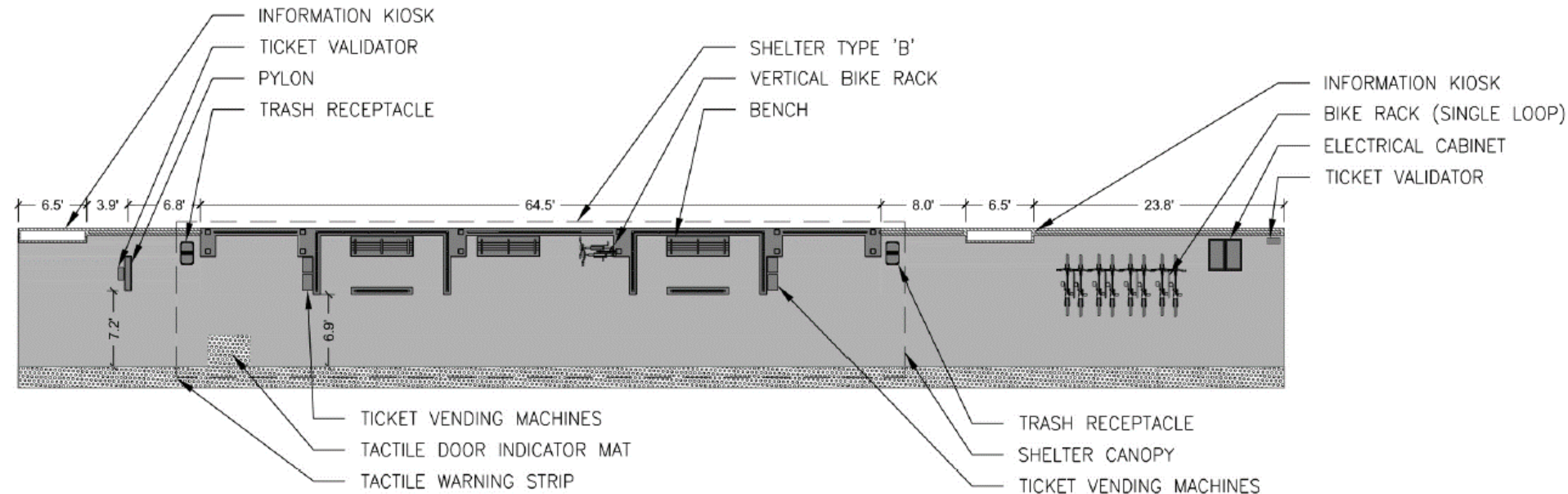
Nicollet Ave
Burnsville Pkwy

BURNSVILLE

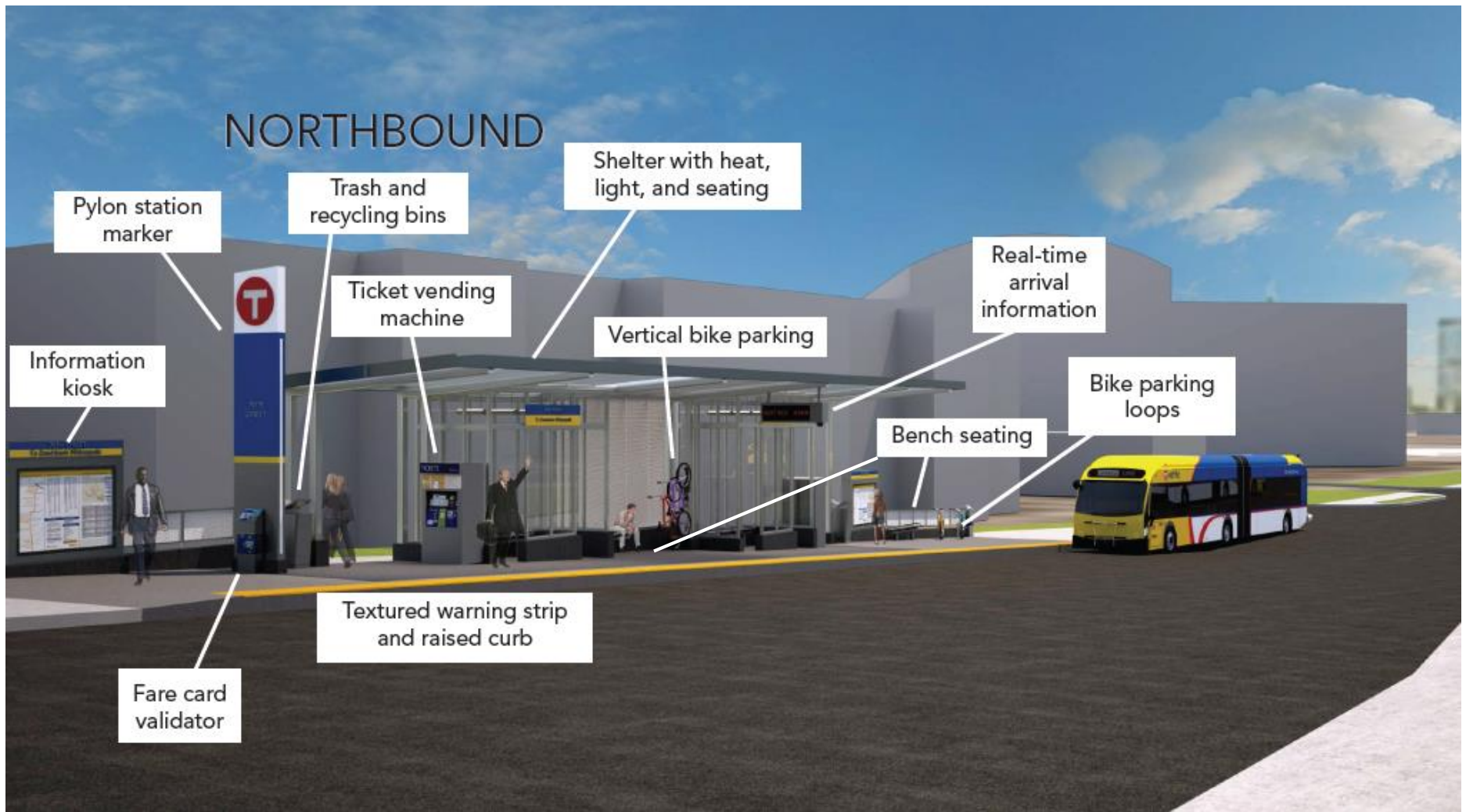
Richfield, Bloomington, Burnsville Stations Design Focus

- Typical platform layout
- 66th Street Station Area & connections to local bus
- 76th Street Station Area & pedestrian connections
- 98th Street Station Area & connections to local bus
- Nicollet Avenue Station Site

Typical Platform Layout



Rendering of Typical Station



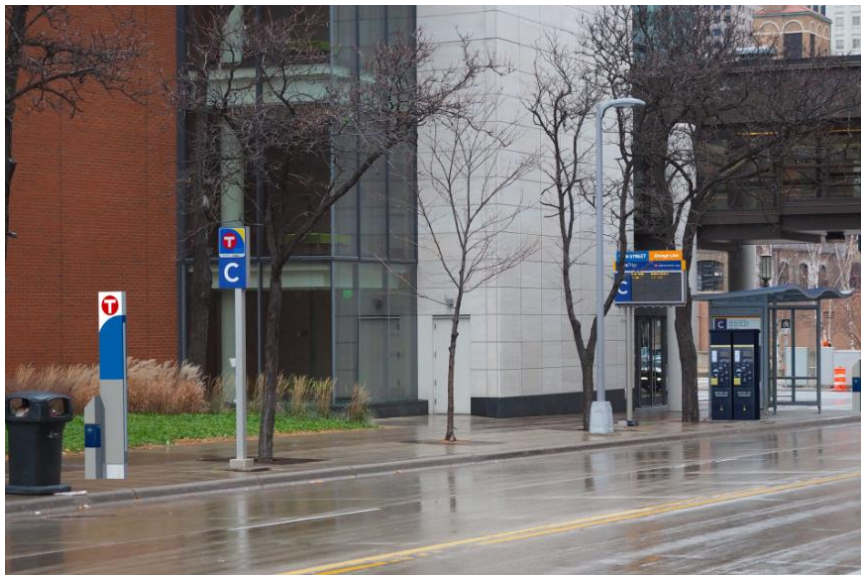
Marquette & 2nd (Marq2) Operations



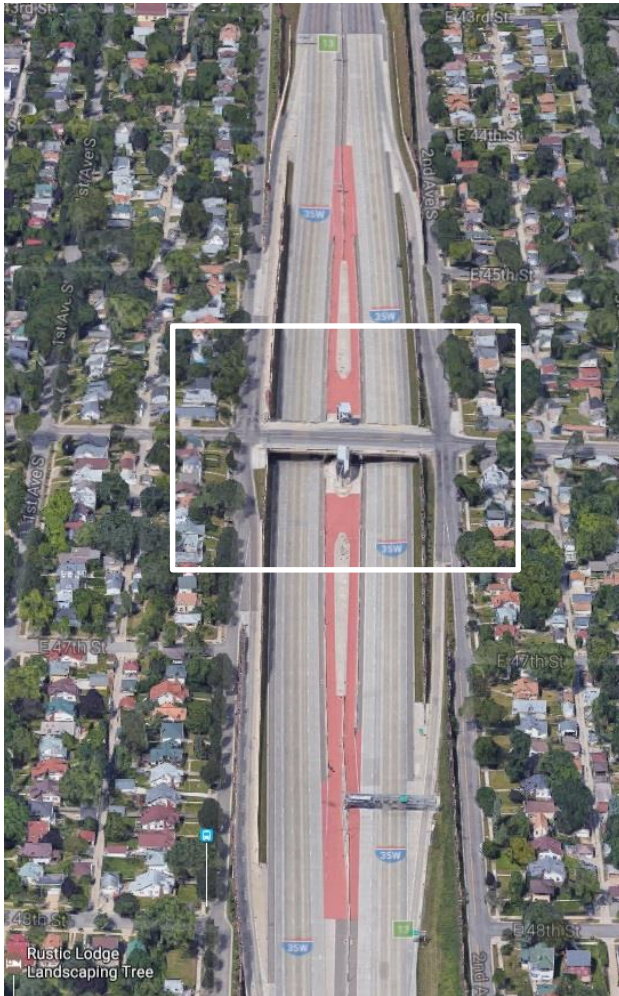
Orange Line on Marq2



- C stop group on Marquette Avenue
- E stop group on 2nd Avenue
- Station upgrades: Orange Line station signage, ticket vending machine, fare card validator



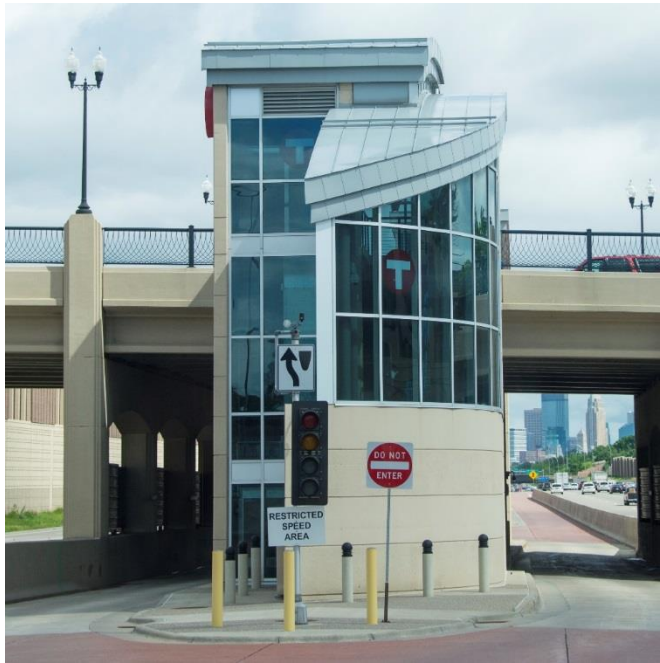
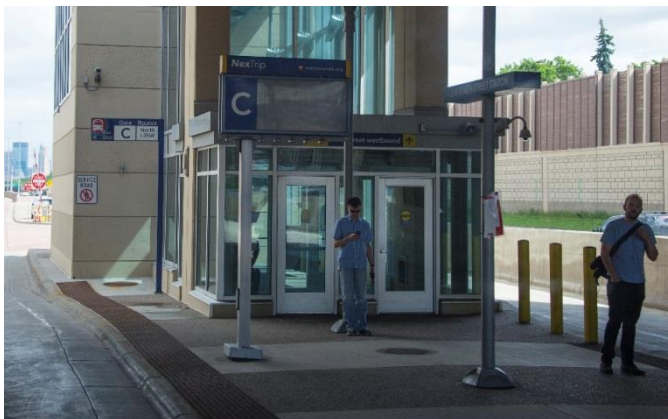
- Existing two-story median station on I-35W
- Serves express routes on I-35W and local routes on 46th Street



Orange Line at 46th Street Station



- Station upgrades: Orange Line station signage, ticket vending machine, fare card validator



Next Steps



- Summary of design discussions
 - Outstanding questions
 - Follow up items
- Orange Line staff available for site visit to Marq2 or 46th Street Station
- **Next Orange Line TAAC update – March 2017**



	2015	2016				2017				2018				2019				2020				
	Q4	Q1	Q2	Q3	Q4	Q1	Q2	Q3	Q4	Q1	Q2	Q3	Q4	Q1	Q2	Q3	Q4	Q1	Q2	Q3	Q4	
Engineering					30%	60%	90%															
Federal Small Starts Funding Program	Project Development				Evaluation & Rating																	
Construction										Construction Schedule dependent on final MnDOT 35W Construction Phasing/Schedule												
Revenue Service																		Following Construction				



T METRO
Orange Line



Get more information or sign-up for our e-newsletter at
www.metrotransit.org/orangeline

Christina Morrison
christina.morrison@metrotransit.org
612-349-7690