

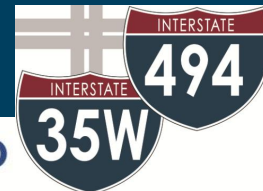
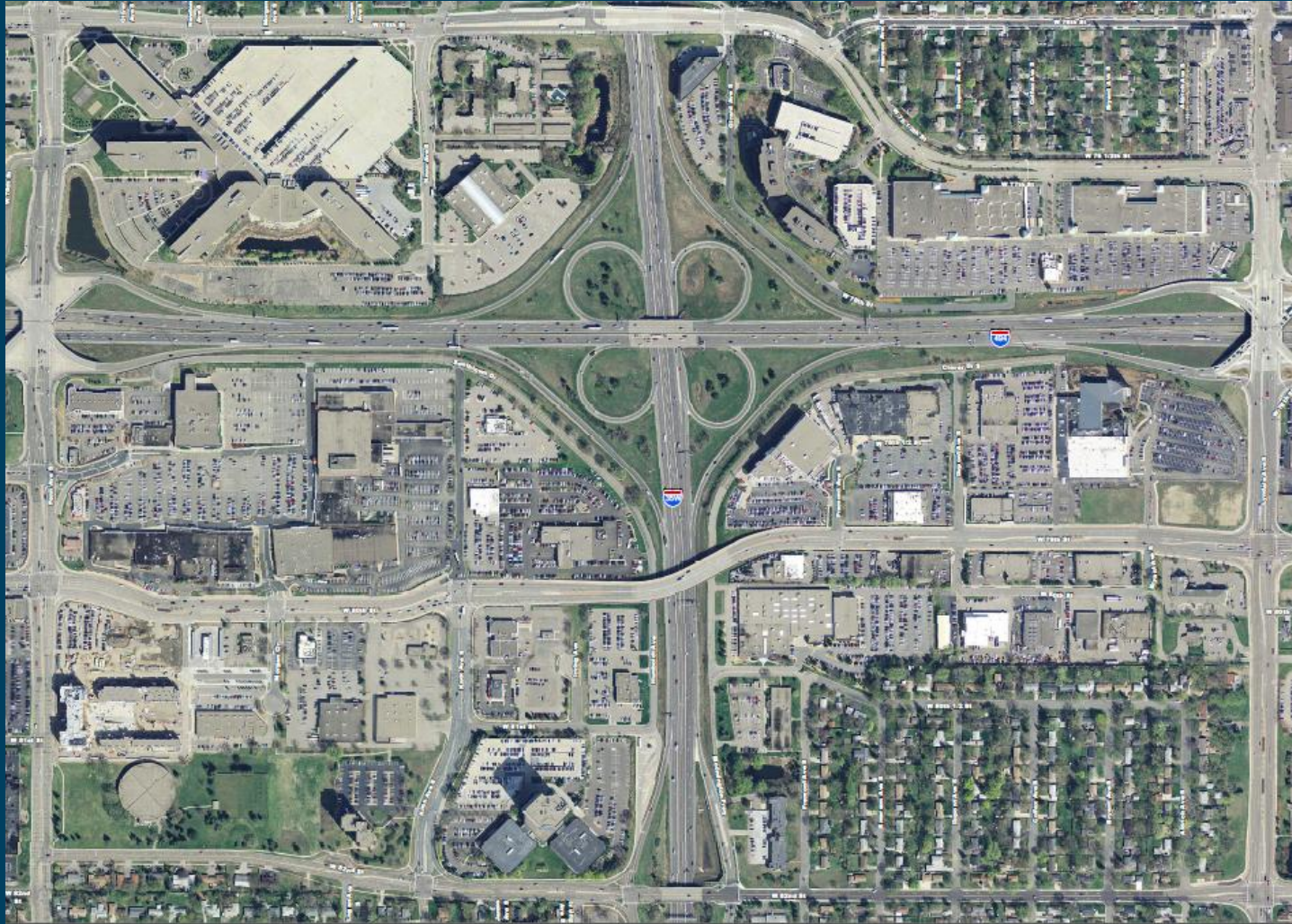


# Welcome to the I-494/I-35W Interchange Vision Layout Development Open House

*Your Destination...Our Priority*



# Study Area

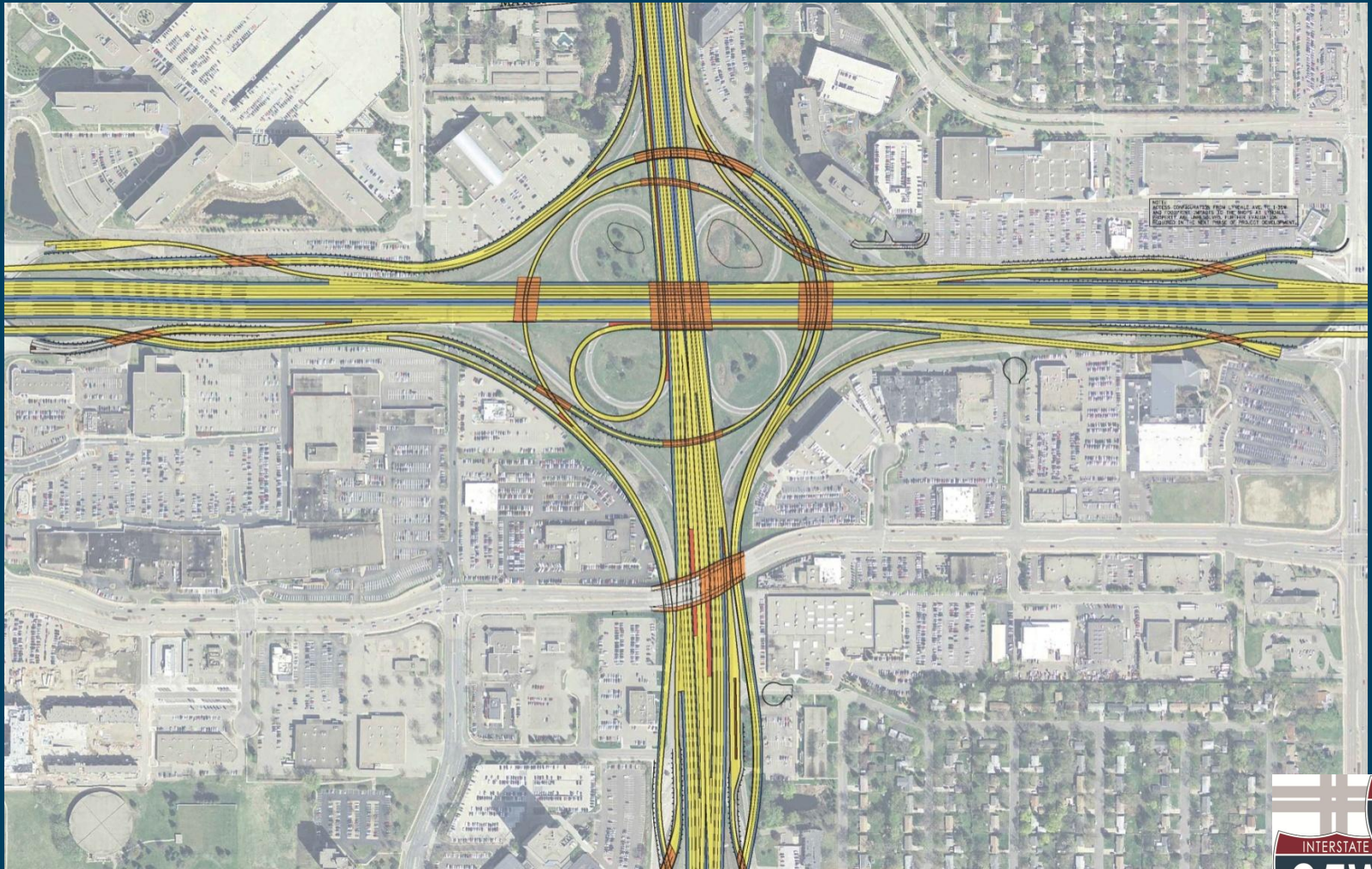


# Study Process and Schedule

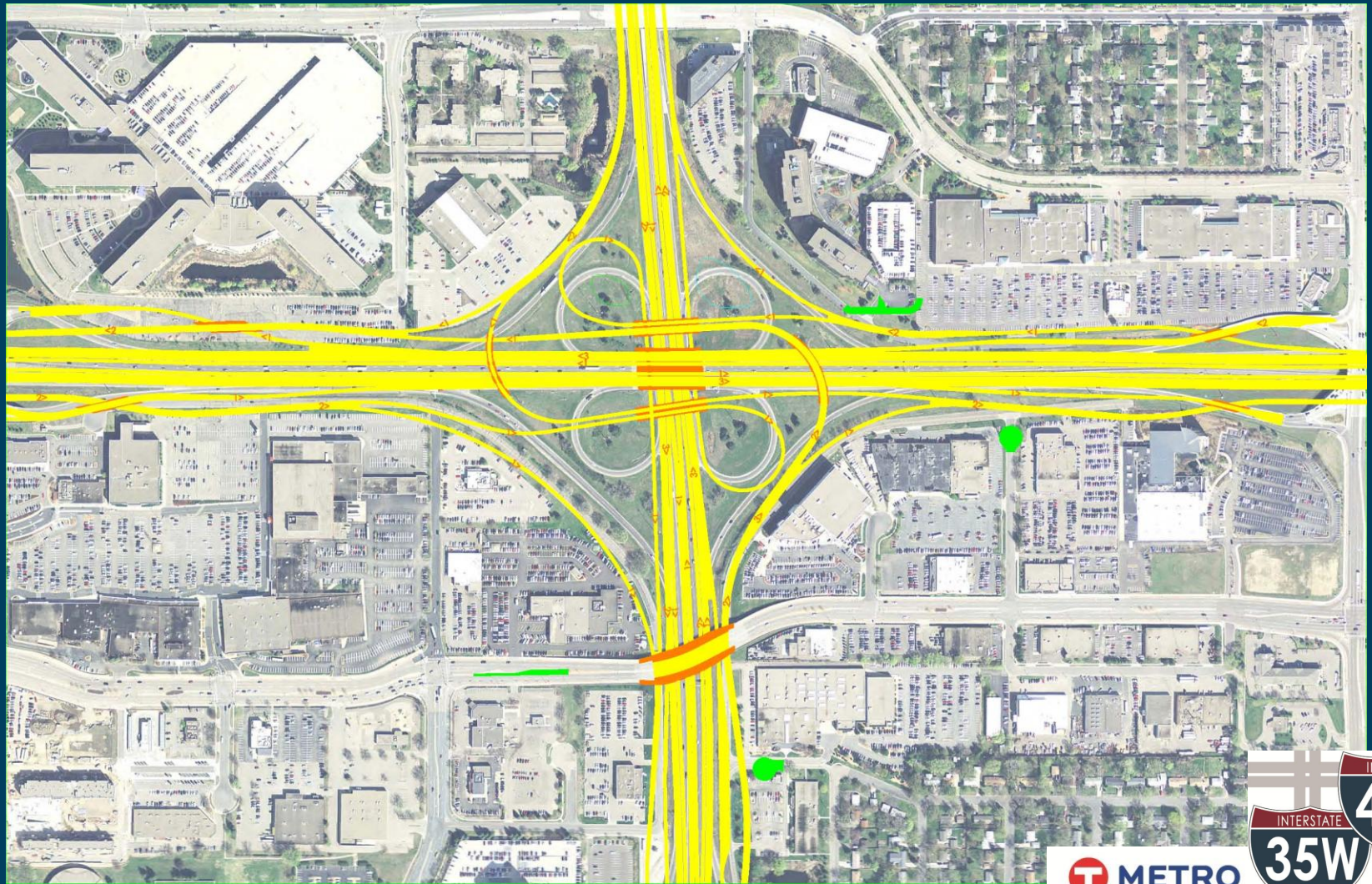
- ▶ Spring/Summer 2013 – Traffic analysis and modeling
- ▶ Fall 2013 – Select transit station and/or park/ride location
- ▶ Fall/Winter 2013/2014 – Bridge type study
- ▶ Spring 2014 – Vision Layout for interchange
- ▶ Fall 2013 and Spring 2014 – public meetings



# Interchange Concept: Turbine



# Interchange Concept: Clovermill

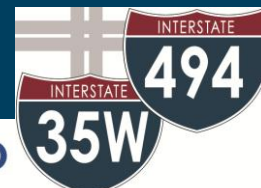
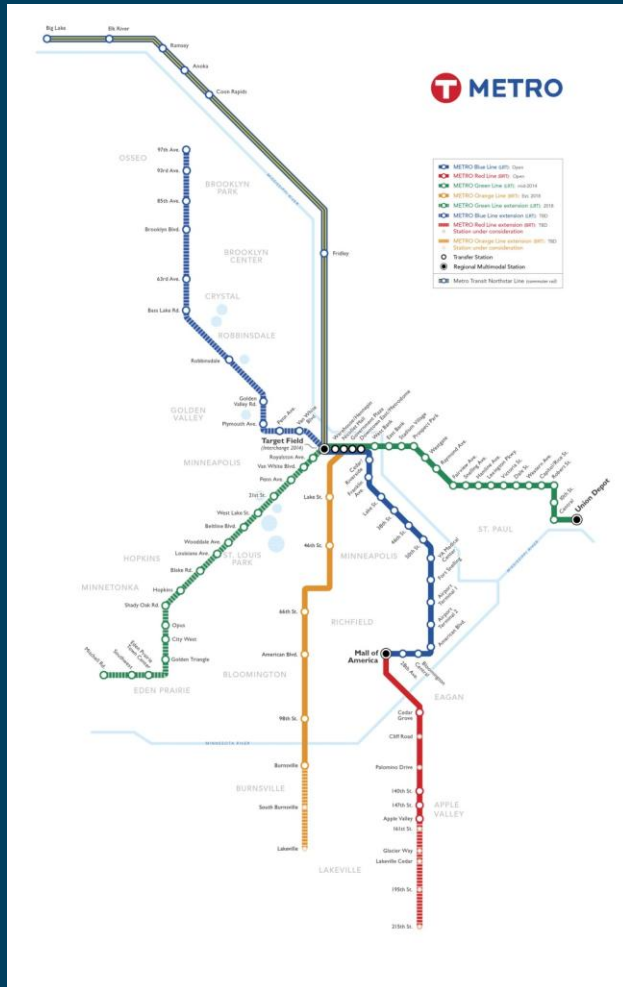


# Interchange Design Considerations

- ▶ Traffic operations and safety
- ▶ Able to build in phases
- ▶ Minimize impacts to adjacent land uses
- ▶ Local access
- ▶ Local and regional storm water improvements



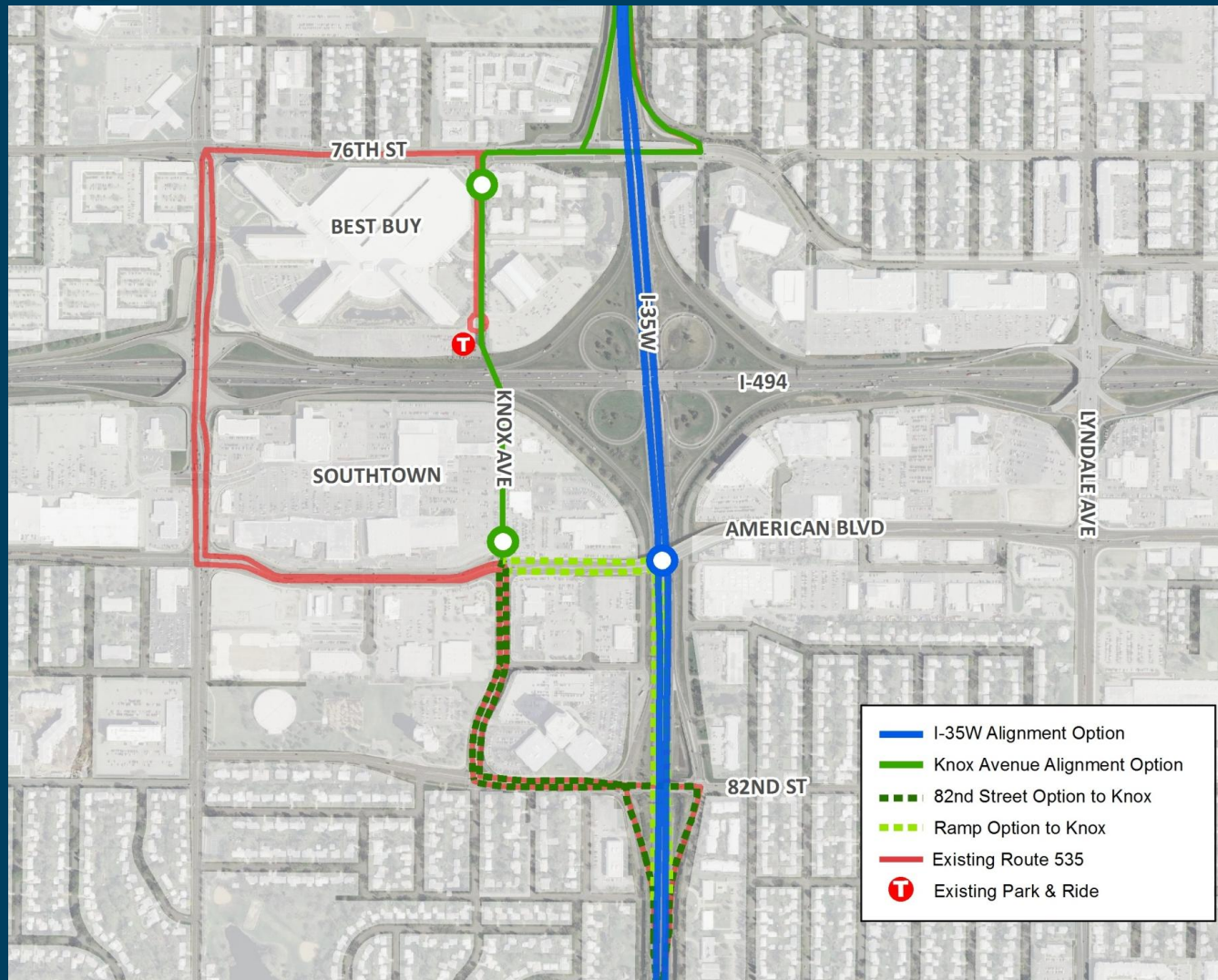
# METRO Orange Line



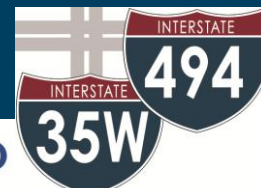
**METRO**



# Orange Line Alignment Alternatives

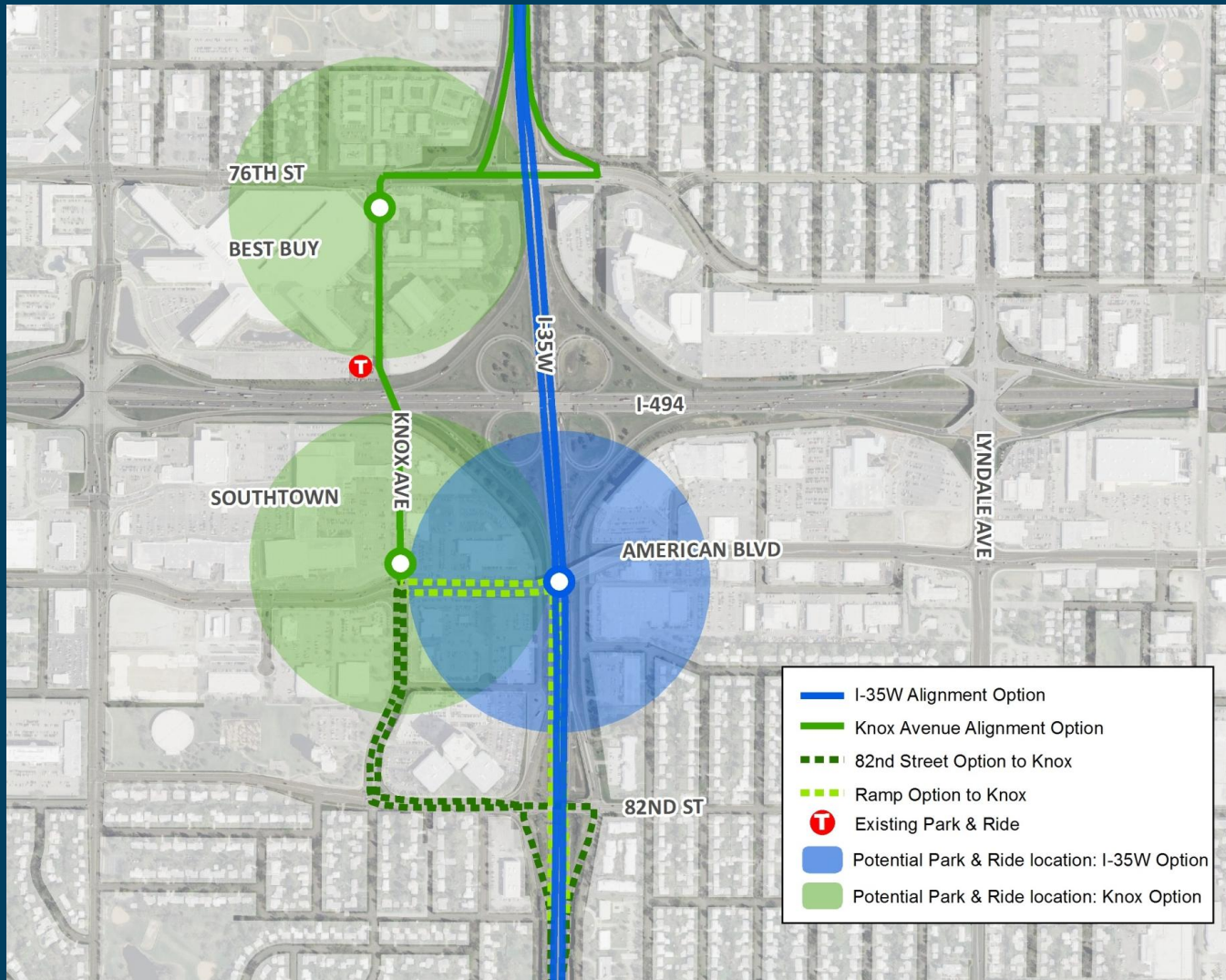


- I-35W Alignment Option
- Knox Avenue Alignment Option
- 82nd Street Option to Knox
- Ramp Option to Knox
- Existing Route 535
- Existing Park & Ride

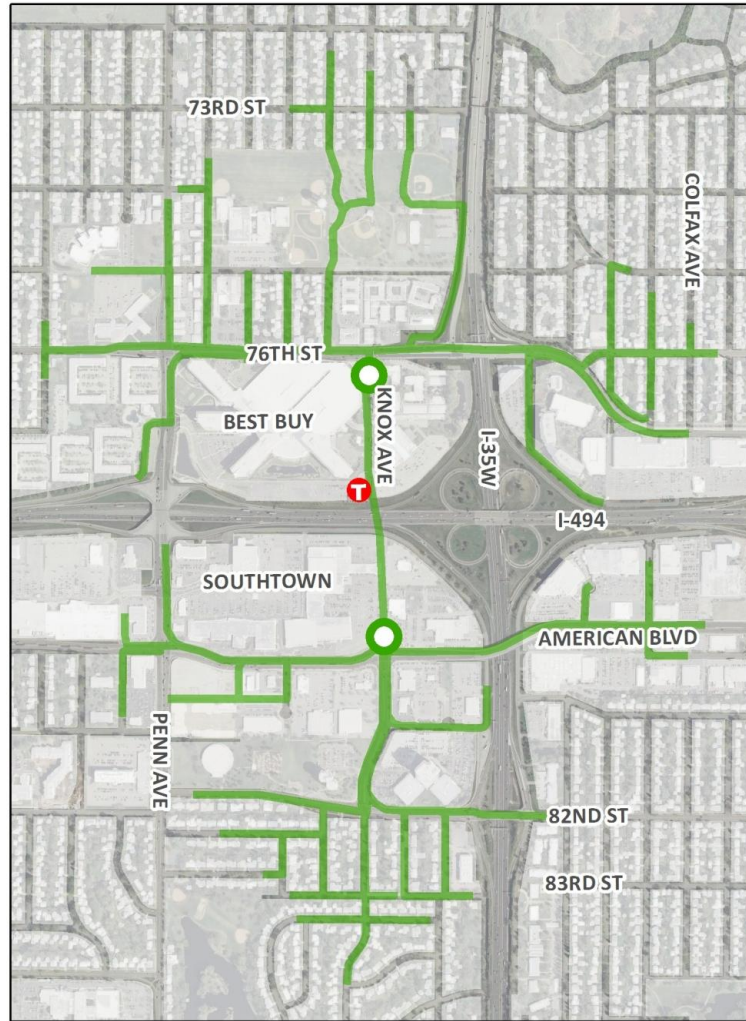




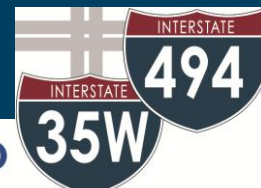
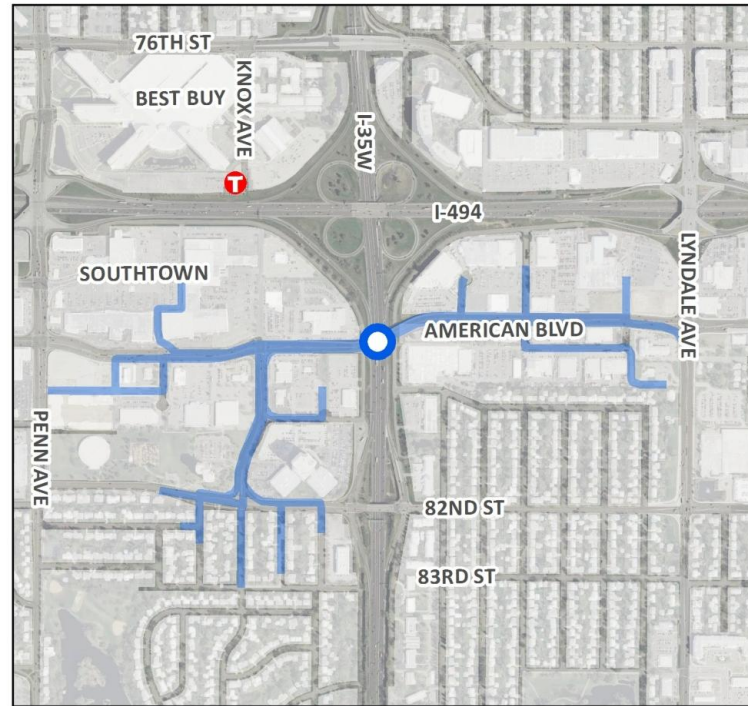
# Potential Park & Ride Locations



# Half-mile Walk from Transit Stations



-  I-35W Option: 1 Median Station
-  Knox Avenue Option: 2 Sidewalk Stations
-  Existing Park & Ride
-  Half-mile walkshed: I-35W Option
-  Half-mile walkshed: Knox Option



# Sidewalk Station Examples (Knox)



Apple Valley



Tacoma



Minneapolis



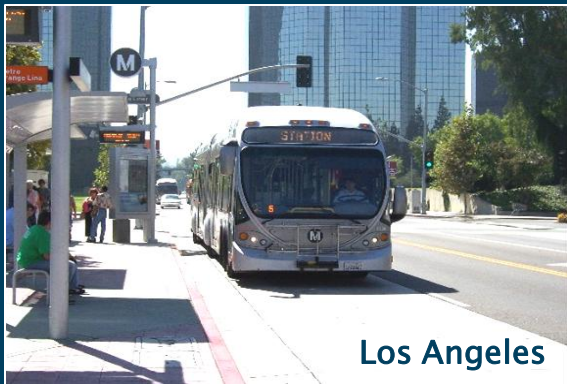
Minneapolis



Cleveland



Portland



Los Angeles



Robbinsdale



# Median Station Examples (I-35W)

