

METRO Orange Line BRT



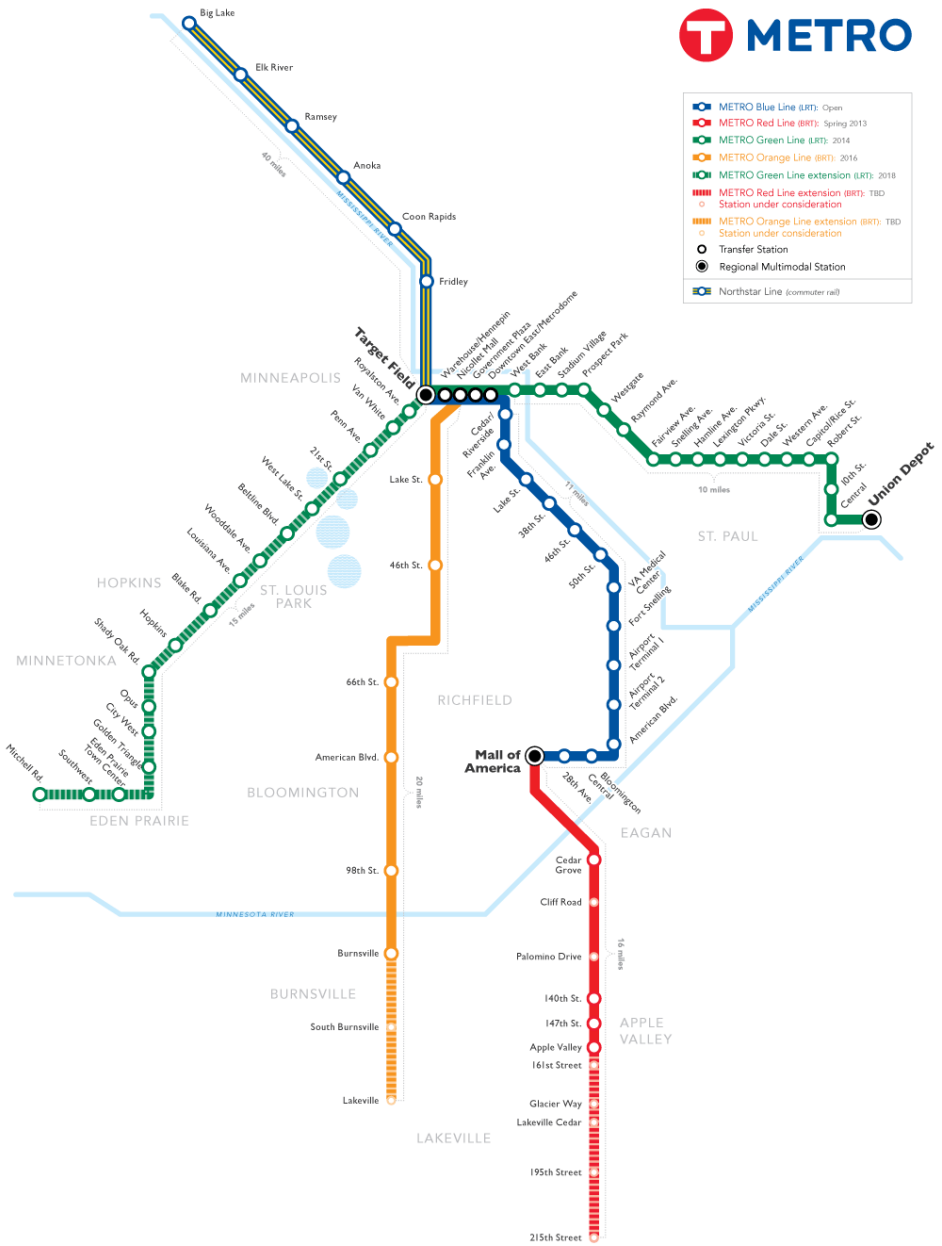
Christina Morrison
Metro Transit
BRT/Small Starts Project Office

July 23, 2013

METRO System



- METRO Blue Line (BRT): Open
- METRO Red Line (BRT): Spring 2013
- METRO Green Line (BRT): 2014
- METRO Orange Line (BRT): 2016
- METRO Green Line extension (BRT): 2018
- METRO Red Line extension (BRT): TBD
- METRO Orange Line extension (BRT): TBD
- Station under consideration
- Station under consideration
- Transfer Station
- Regional Multimodal Station
- Northstar Line (commuter rail)



Real-time Information



Better Accessibility



Improved Stations and Vehicles



Improved Experience

Less Boarding Delay



Congestion-free Ride



All-day, Frequent Trips

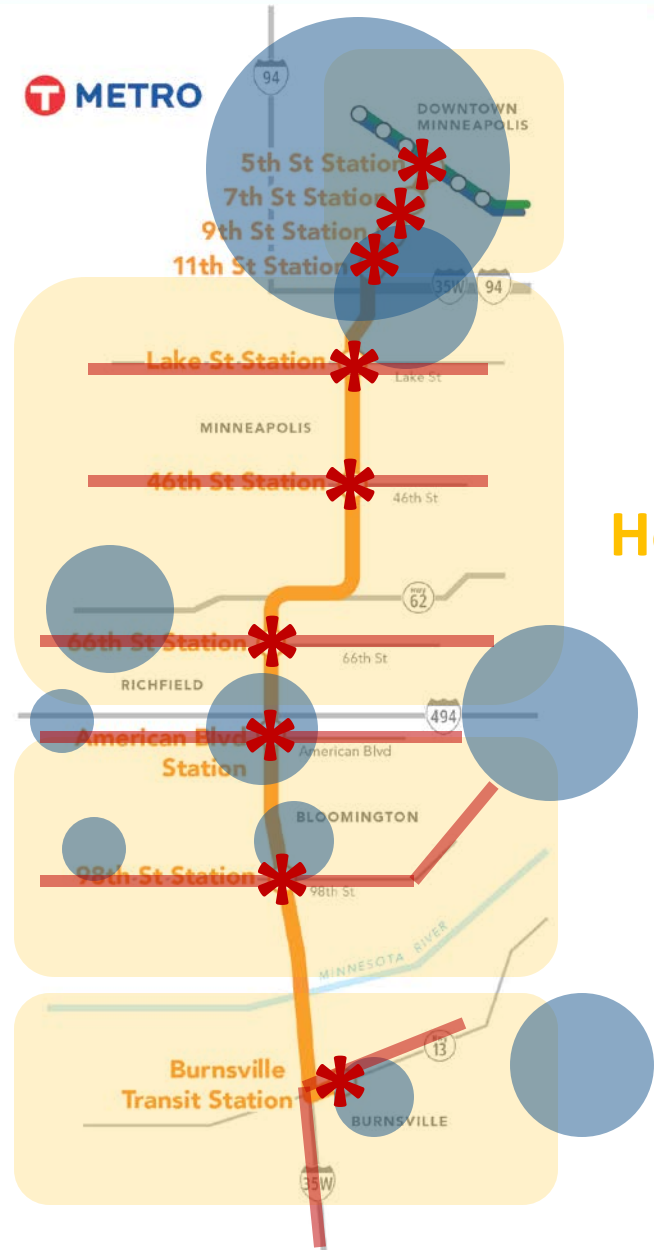


Reliable Service



Jobs & Destinations

Transit Connections



Housing

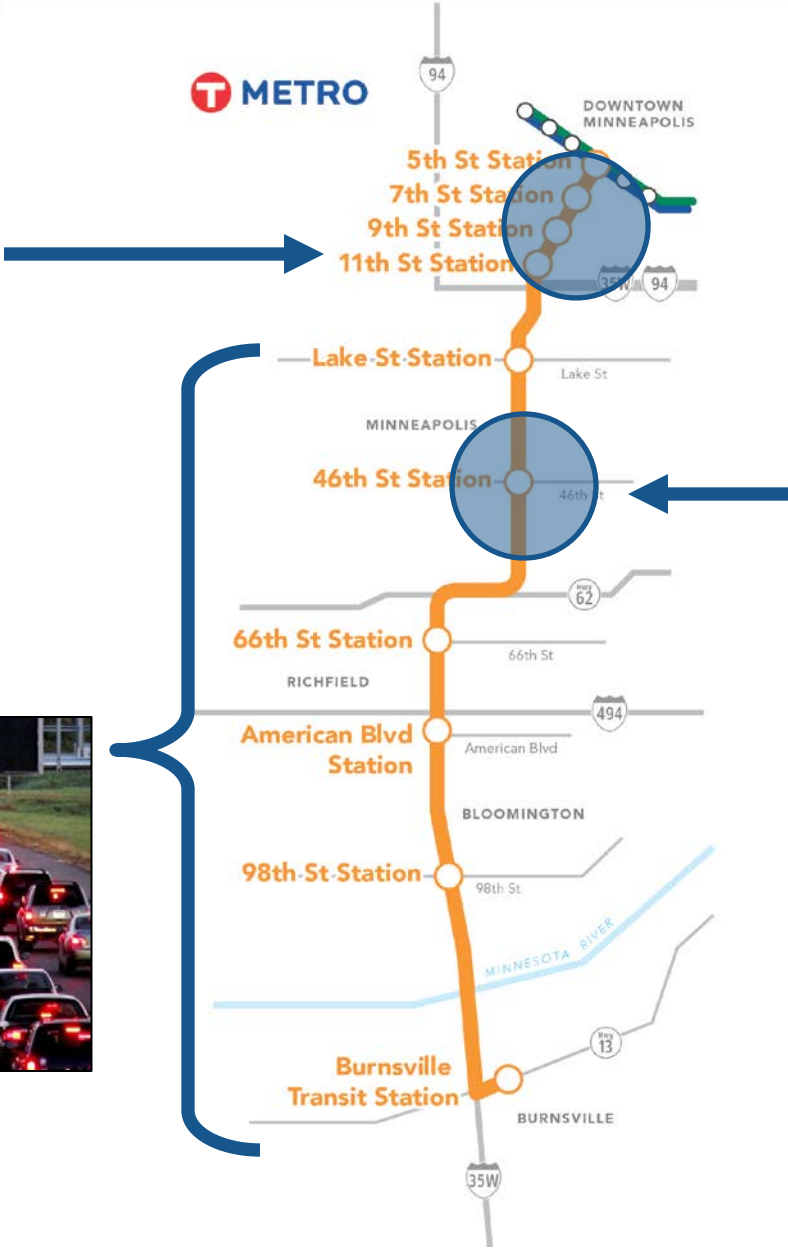
Build on Past Investments



MARQ2

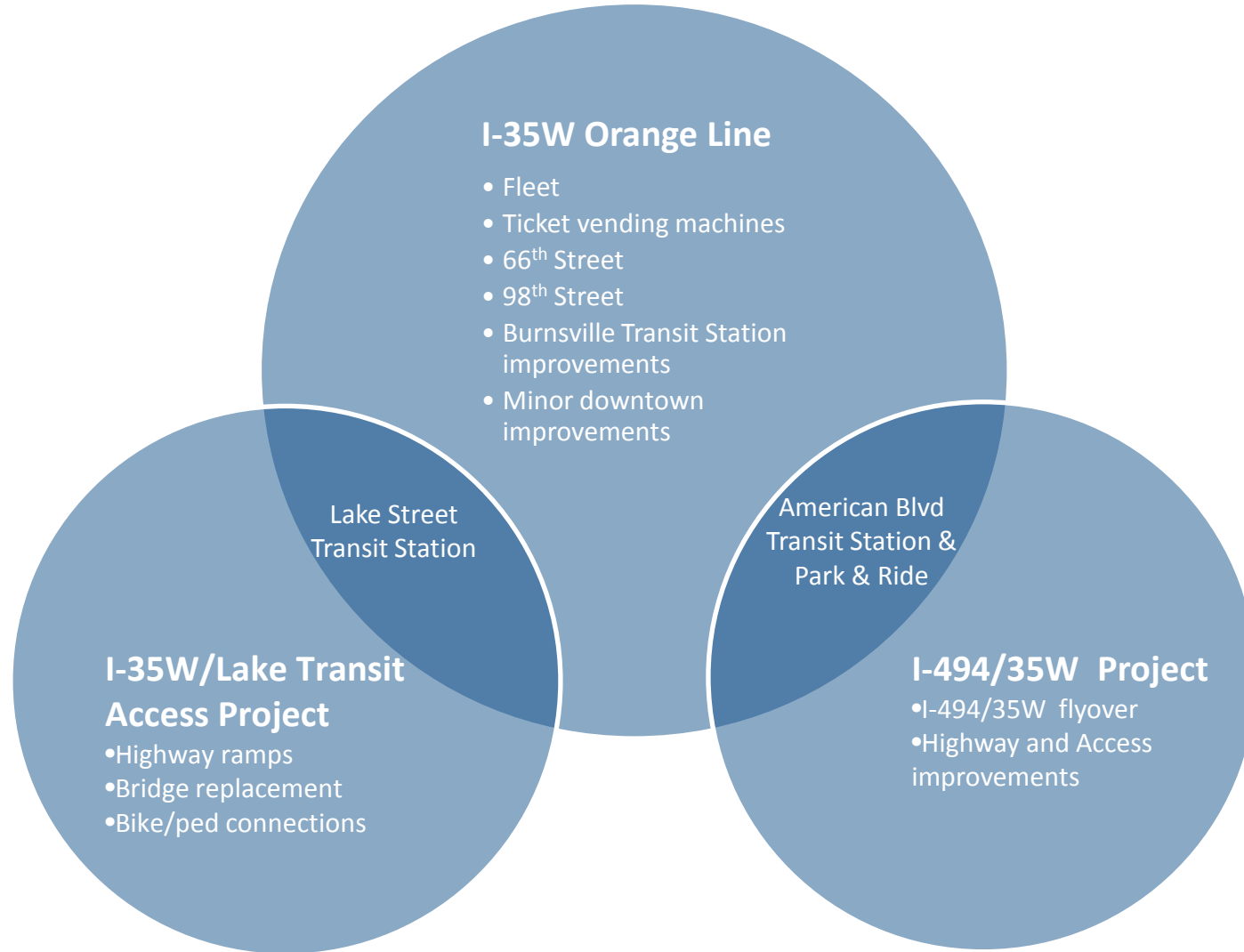


MnPass Lanes

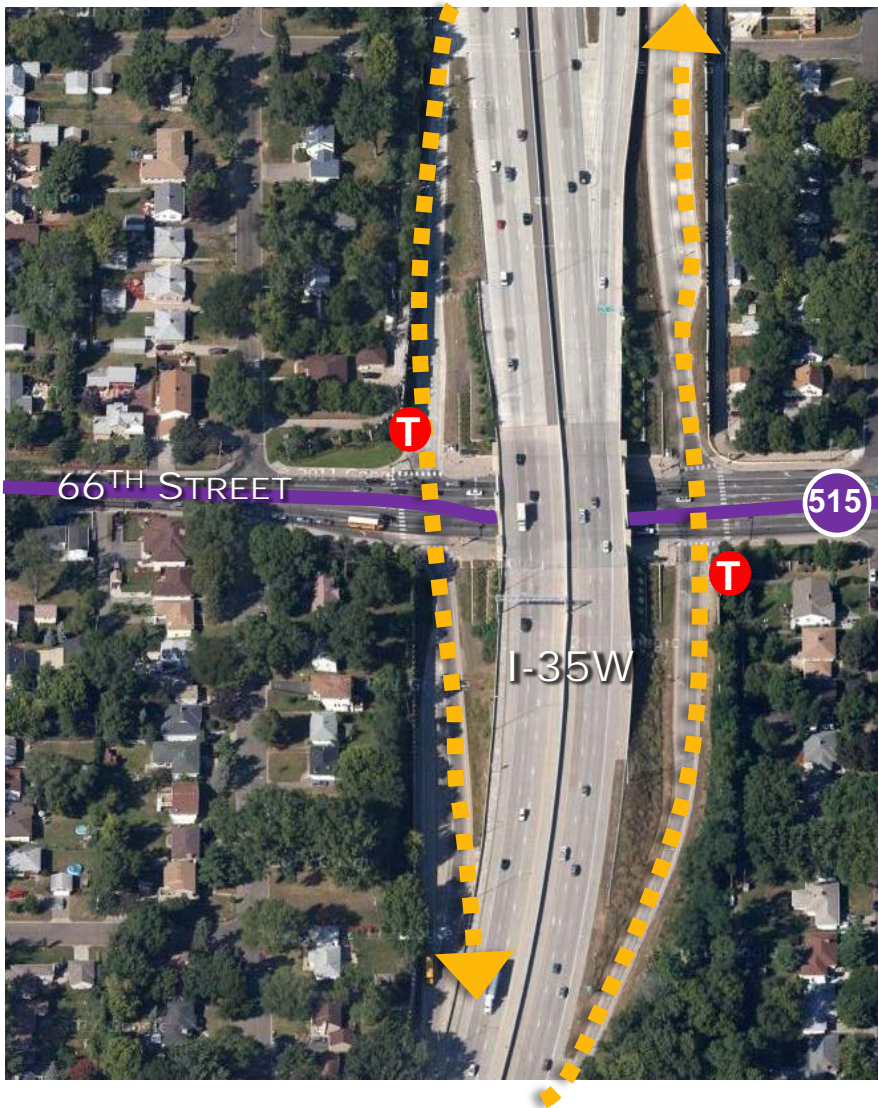


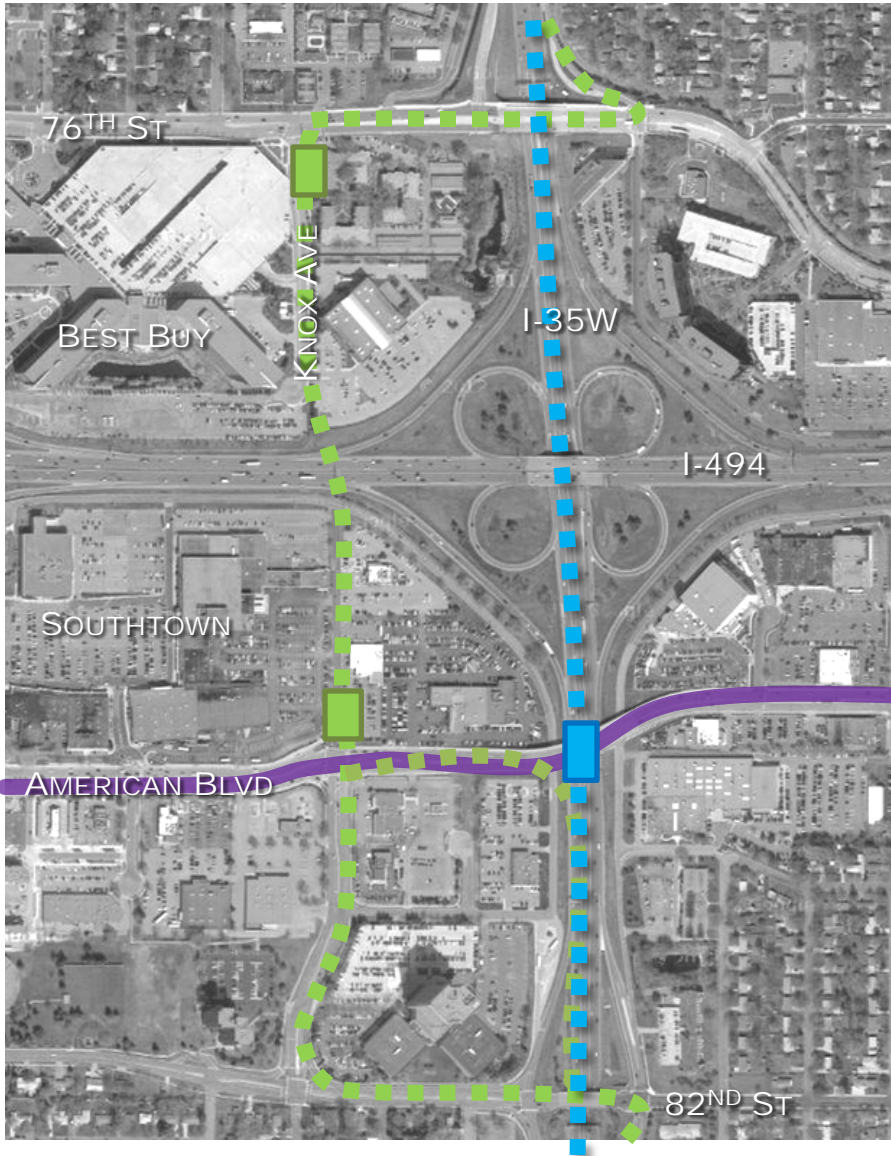
46th Street





I-35W & 66th Street Station





Criteria

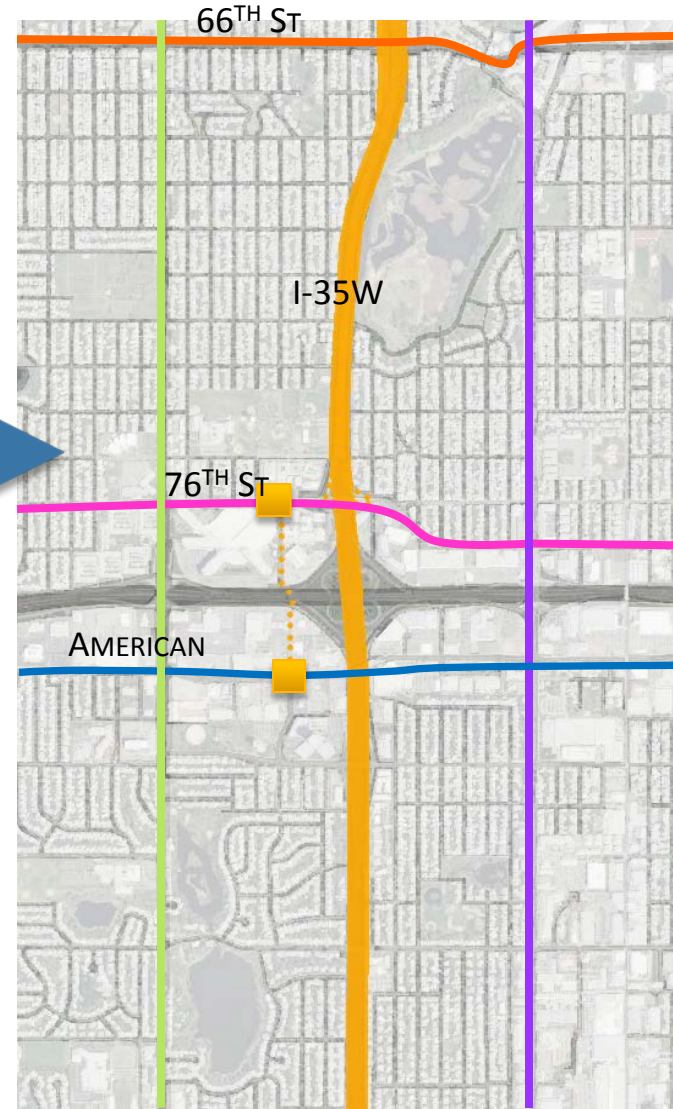
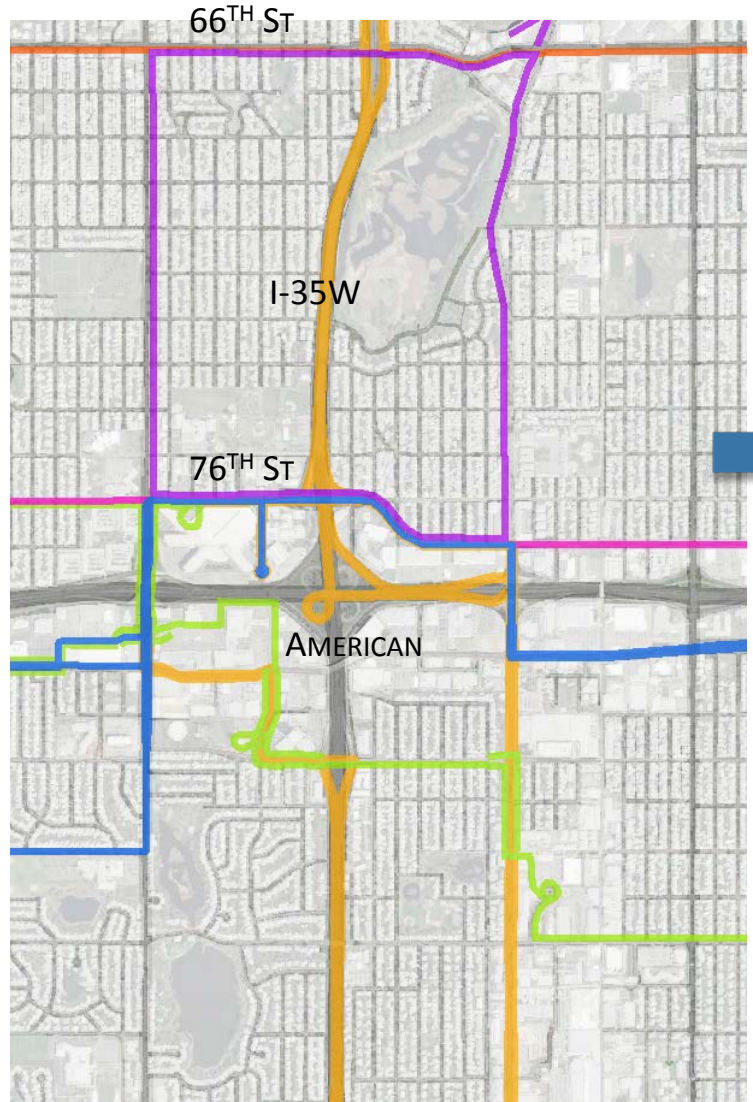
- Transit Station
- Transit Operations
- Transit Users

Locations

- Station(s)
- Alignment
- Park and Ride

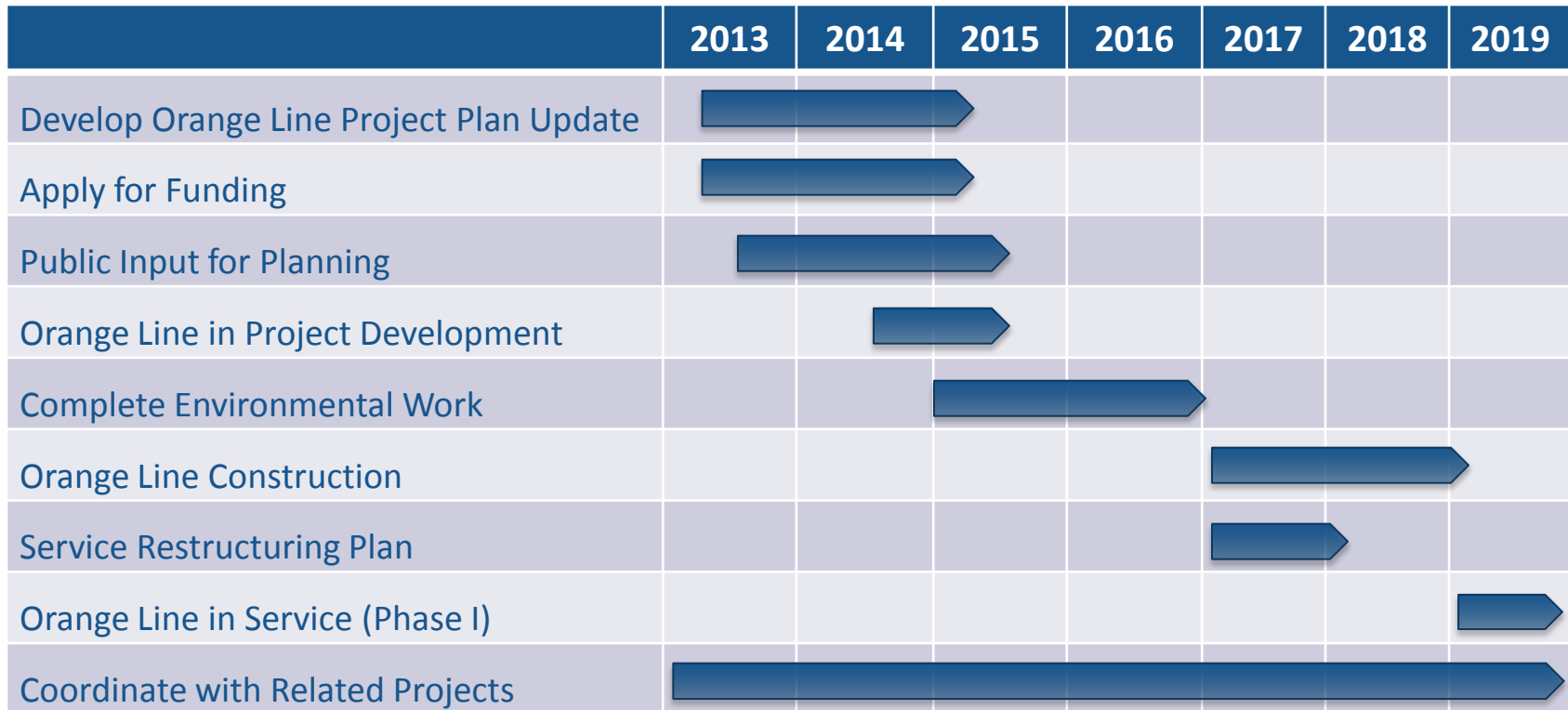
Half-Mile Walkshed





| | 2013 Goals |
|----|--|
| 1 | Document previous planning |
| 2 | Determine environmental (NEPA) path |
| 3 | Develop existing conditions report |
| 4 | Compile demographic & land use information |
| 5 | Review transit service planning |
| 6 | Forecast ridership |
| 7 | Create conceptual design for 66 th , 98 th & BTS |
| 8 | Develop project scope, budget & timeline |
| 9 | Define implementation roles & responsibilities |
| 10 | Scope Orange Line Phase II |

Project Timeline





Christina Morrison, Senior Planner
612- 349-7690
christina.morrison@metrotransit.org

