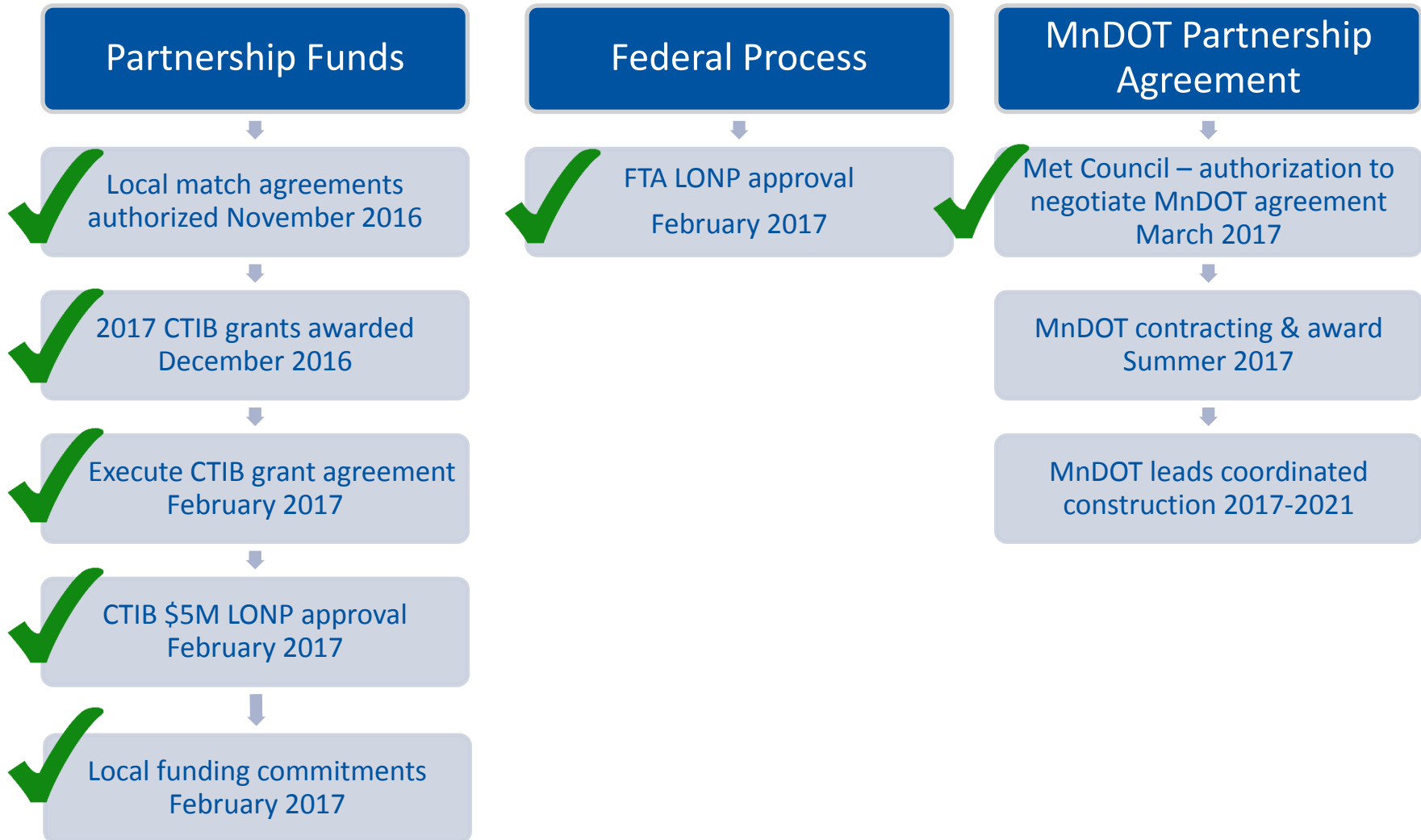


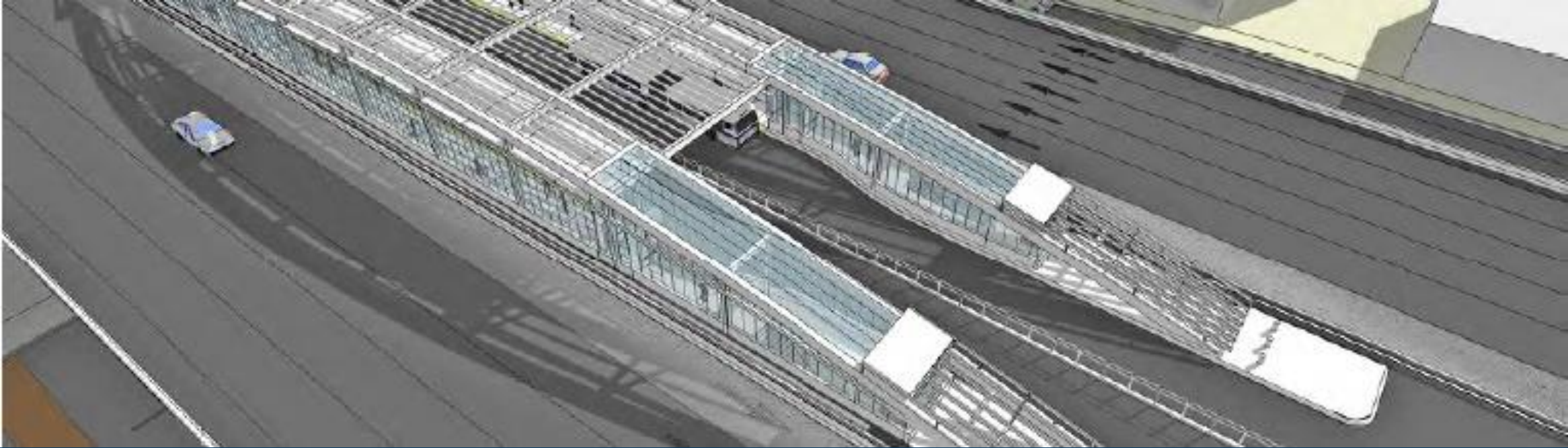


Orange Line TAC

May 9, 2017

Sequence and Schedule to MnDOT Partnership





I-35W Staging and Traffic Control

Scott Pedersen, MnDOT Project Management Manager

Metropolitan District

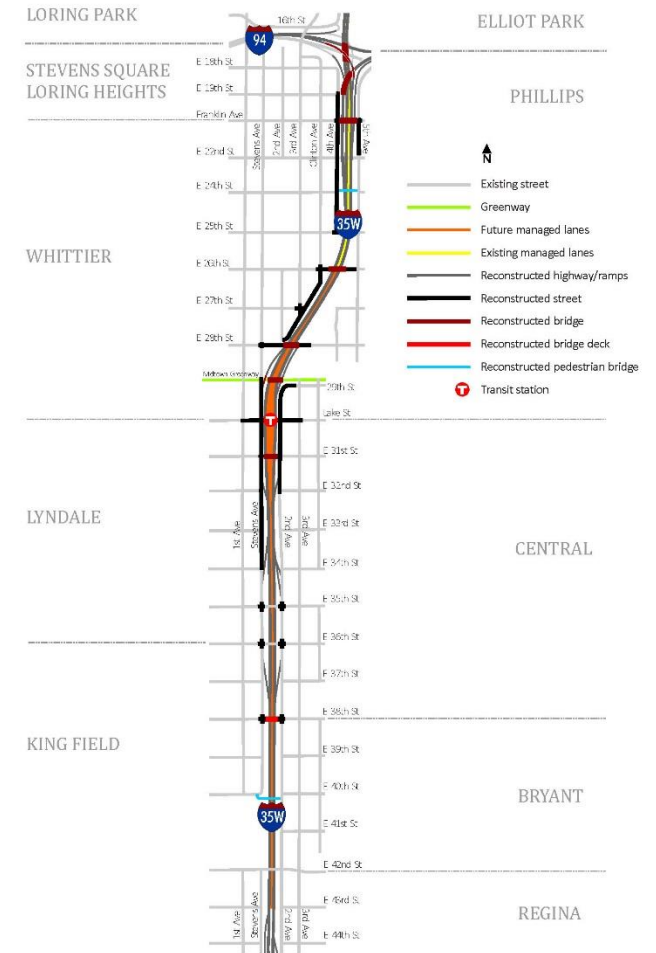
May 9, 2017

Agenda

Time	Topic
	General Project Overview
	Overall Project Schedule
	Stages of Construction
	Discussion

General Project Overview

- Developed as a Partnership
- Project Scope
 - Construction of On-Line Transit Station
 - Establish full time MnPASS Lanes on I-35W in and out of Downtown Minneapolis
 - Enhance Local Access to Lake Street and 28th Street
 - Enhance bicycle and pedestrian access.
 - Replace pavement and bridges



General Project Schedule

- Project Advertisement: Friday, May 5, 2017
- Project Letting: Wednesday, June 28, 2017
- Project Award/Construction Start: Mid-August 2017
- Project Construction Substantial Completion: Fall 2021

Stage 1

- Begins in Mid-August 2017 and Completed in April 2018
- Work completed with temporary lane restrictions
- Work to be completed as part of this stage
 - Work on Portland Avenue Bridge
 - Replacement of Franklin Avenue Bridge
 - Work on 38th Street Bridge
 - 11th Street Exit Ramp from WB I-94
 - Grading on WB I-94
 - Temporary Widening of NB I-35W
 - Sanitary Sewer and Water Relocations on 4th Avenue and 5th Avenue
 - Construction of Temporary Crossovers.

Stage 2

- Begins May 2018 and is anticipated to be completed in October 2018
- I-35W restricted to 5 lanes, TH 65 Closed, and WB I-94 restricted to 2 lanes
 - Ramps from NB I-35W to WB I-94 and EB I-94 to SB I-35W closes for duration of project
 - Local entrance ramps closed and exit ramps (except 35th Street) open
- Work to be completed
 - Construction of SB TH 65 Bridge over I-94
 - Construction of 26th Street Bridge over I-35W
 - Construction of 40th Street Pedestrian Bridge
 - Construct TH 65 bridge over proposed SB I-35W re-alignment
 - Retaining walls and pavement

Transit Service During Stage 2

- The closure of TH 65 during this stage will greatly impact the transit
- Transit service on I-35W during Stage 2 will be as follows:
 - Busses destined for downtown to provide service to other lines will stay on I-35W and utilize 3rd and 4th Streets
 - Express Bus Service on I-35W will exit at 31st Street and use Park/Portland Avenues to 11th Street as a detour route
 - Local Bus Service on I-35W will exit at 31st Street and use 1st and Blaisdell Avenue to 11th Street as a detour route.
 - Minnesota Valley Transit Authority is exploring the possible use of Hiawatha Avenue for a portion of their bus service during this time.

Stage 3

- Stage 3 begins in November of 2018 and lasts through October of 2019
- I-35W restricted to 5 lanes, TH 65 restricted to two lanes, and WB I-94 restricted to 2 lanes
 - Ramps from NB I-35W to WB I-94 and EB I-94 to SB I-35W closes for duration of project
 - Local entrance ramps closed and exit ramps open
- Work to be completed
 - Construction of 28th Street Bridge
 - Construction of NB TH 65 Bridge over I-94
 - Construction of Transit Bridge to 12th Street
 - Construction of SB Bridges over 31st Street, Lake Street, and Mid-Town Greenway
 - Pavement on all three roadways.

Stage 4

- Stage 4 begins in November of 2019 and lasts through October of 2020
- I-35W restricted to 6 lanes, TH 65 restricted to two lanes, and WB I-94 has 3 lanes
 - Ramps from NB I-35W to WB I-94 and EB I-94 to SB I-35W closes for duration of project
 - Local ramps closed on SB I-35W and exit ramps at 36th and 31st Street open on NB I-35W
- Work to be completed
 - Construct Transit Station Bridge over Lake Street
 - Complete Pavement Reconstruction on SB I-35W
 - Complete Pavement Reconstruction on NB I-35W from 24th Street to Portland

Stage 5

- Stage 5 begins in November of 2020 and lasts through October of 2021
- I-35W restricted to 6 lanes, TH 65 restricted to two lanes, and WB I-94 has 3 lanes
 - Ramps from NB I-35W to WB I-94 and EB I-94 to SB I-35W closes for duration of project
 - Local ramps closed on SB I-35W and exit ramps at 36th and 31st Street open on NB I-35W.
- Work to be Completed:
 - Construct Bridges on NB I-35W over 31st Street, Lake Street, and Mid-Town Greenway
 - Complete 24th Street Pedestrian Bridge
 - Complete construction of NB I-35W to WB I-94 ramp
 - Complete construction on WB and EB I-94
 - Pavement on NB I-35W from 43rd to 24th Street
 - Construct permanent pavement on 5th Avenue north of Franklin Avenue
 - Construct 2nd Avenue from 32nd Street to 29th Street.

Thank you again!

Scott Pedersen

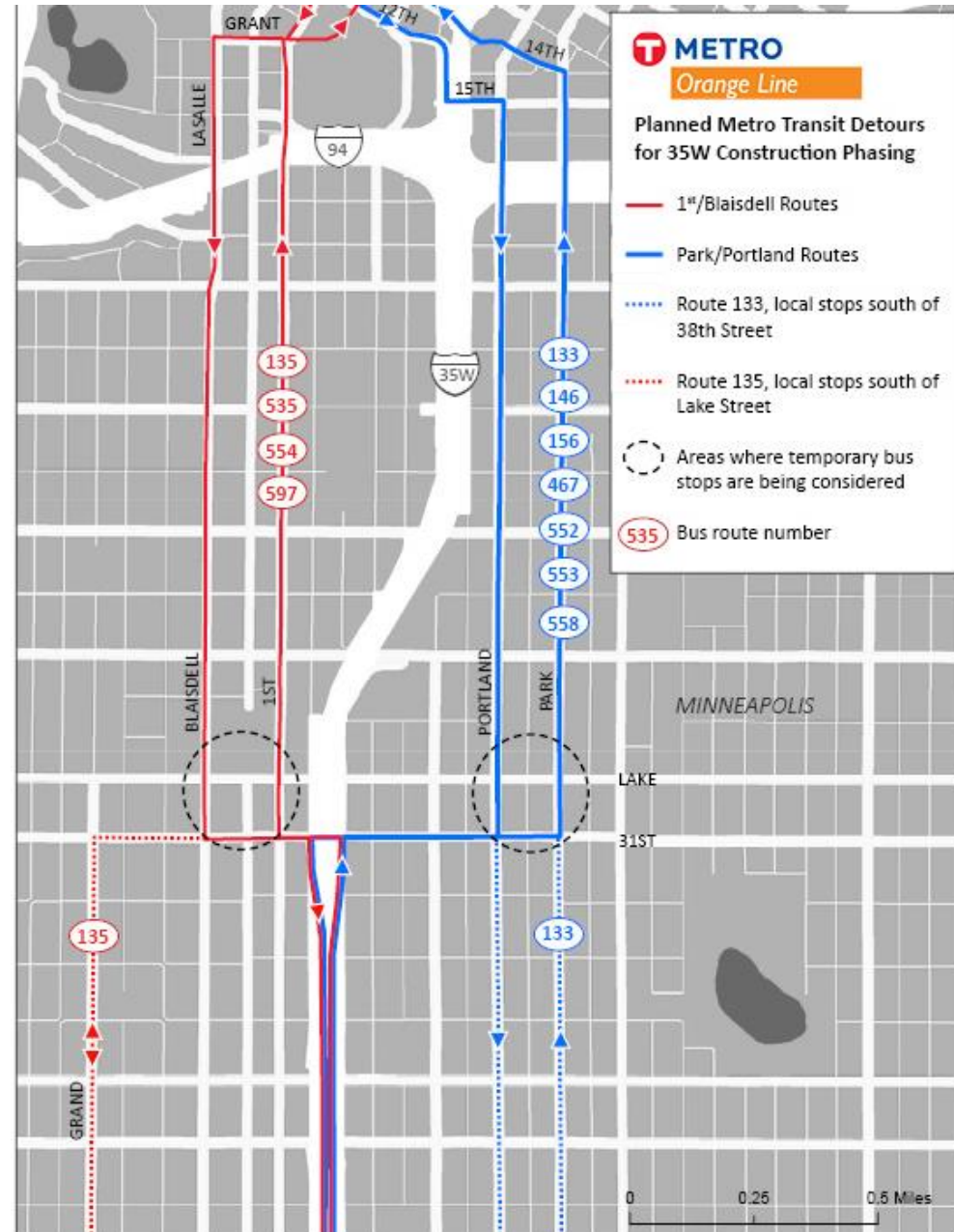
Scott.pedersen@state.mn.us

651-234-7726

Planned Metro Transit Detours



- I-35W stop at Lake Street will be closed for the duration of construction
 - Temporary stops being considered
- During phase where access to downtown is restricted from 35W/Hwy 65:
 - Transit-only exit/entrance at 31st Street
 - 35W express buses split between Blaisdell/1st and Park/Portland
 - 133 rerouted to Park/Portland south of 31st
 - 135 rerouted to Grand south of 31st



Orange Line Phasing



Orange Line construction to be within 3 separate construction contracts

- 35W/Lake Street station and 12th Street Ramp
 - Construction award in 2017 with completion in 2021
- Orange Line station package includes station improvements, signals, restriping, pylons
 - Construction award in 2018 with completion in 2020
- Knox Ave transitway underpass includes highway heavy construction associated with I-494
 - Construction award in spring of 2018 with completion in 2020
 - I-494 work all within 2019 construction season
- Phased work, not all sites will be under construction at once
- Fare collection equipment and signage will be placed at all locations in mid 2020
- Local CIP projects and redevelopments will help inform phasing



Topic	Due Date	Contact
Platform addresses	May 31, 2017	Rebecca
Design comments	Ongoing	Rebecca
CIP project and development info	July 15, 2017	Christina
Small Starts application data	July 15, 2017	Natalie

Small Starts Updates

- 2016-2017 development projects (multi-family, mixed-use, affordable housing)
- Updated pedestrian infrastructure & curb ramp data
- Transit-supportive plans, policies, zoning
- City & County chapter review

Fall 2016

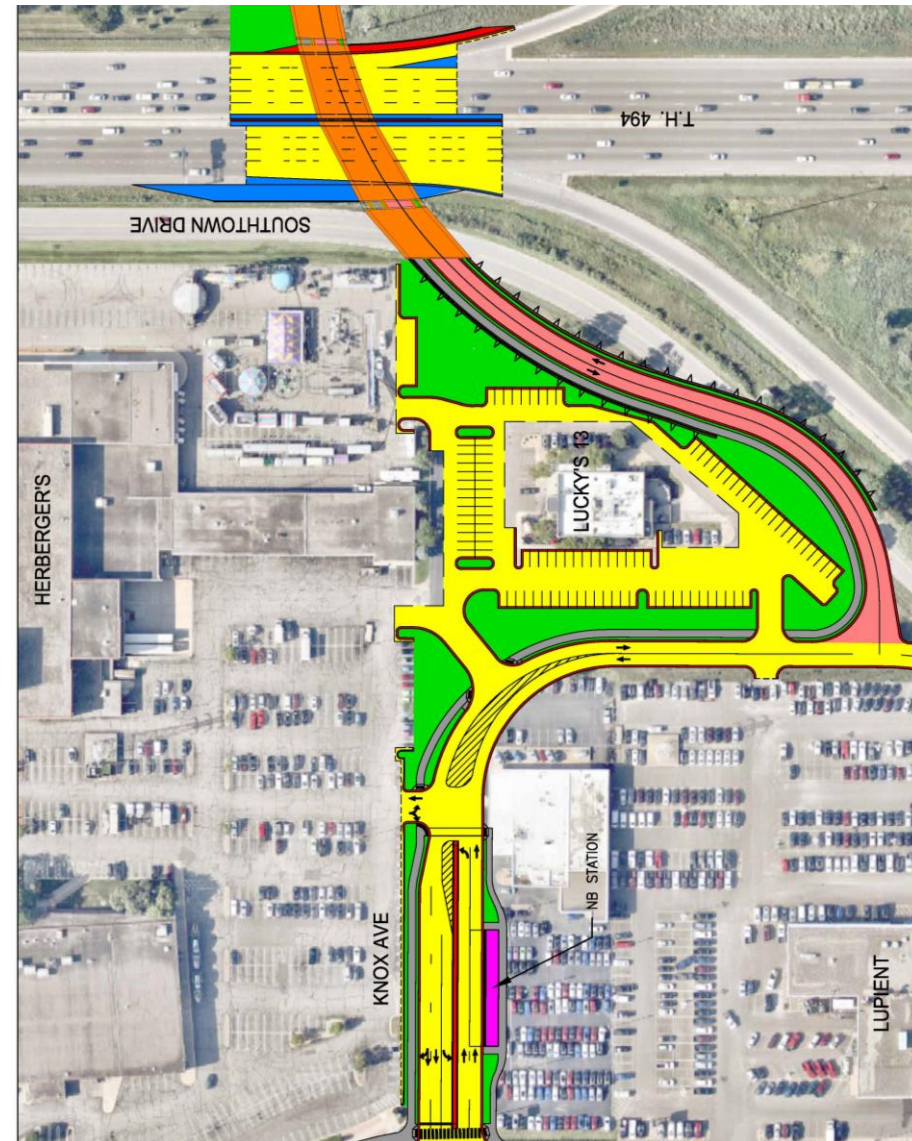
- Carried both direct routing and curved routing through NEPA

December 2016

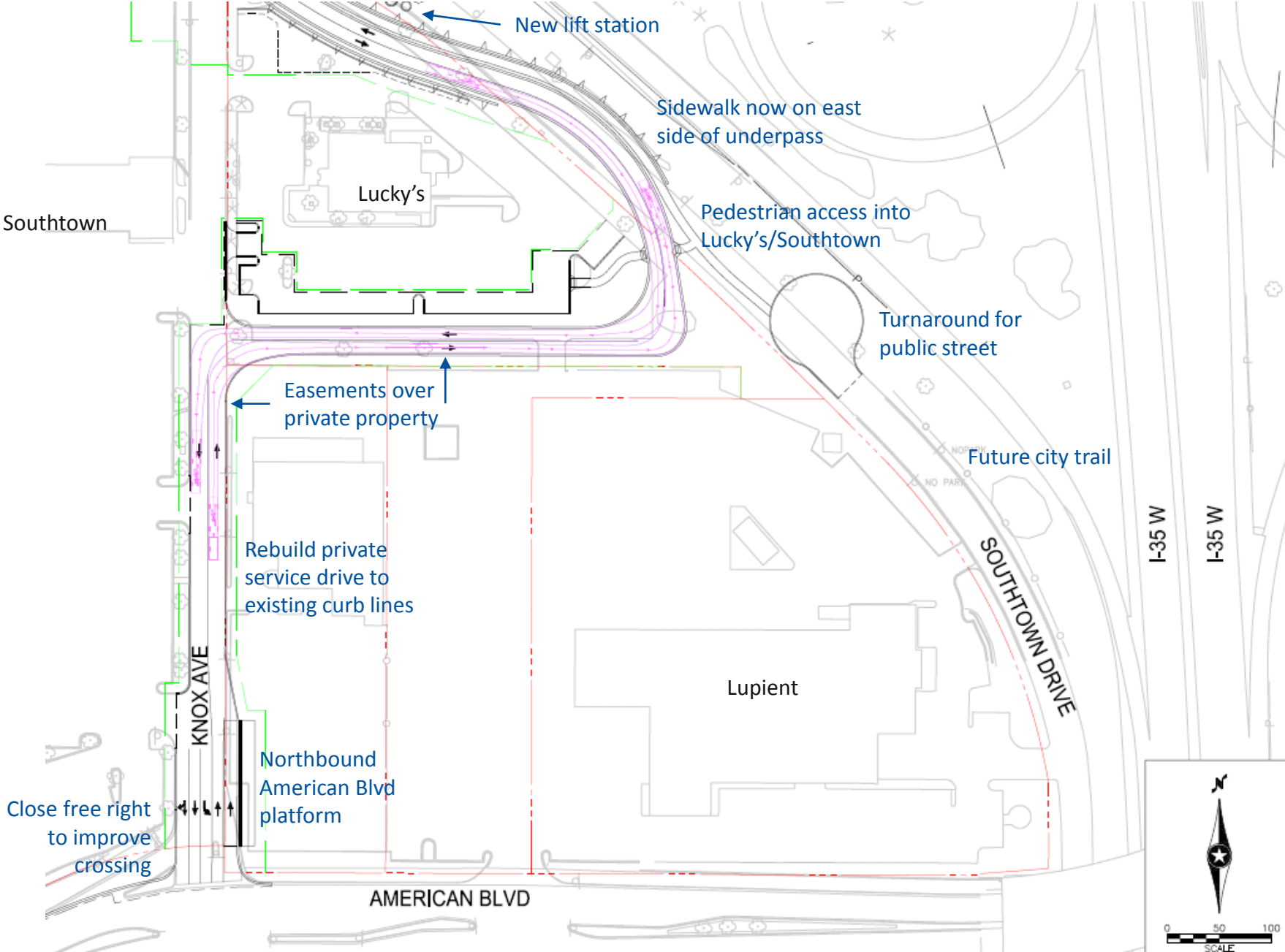
- Worked with Kraus Anderson to focus in on aligning curved routing with planned redevelopment needs

February/March 2017

- Worked with City and KA to discuss options for real estate acquisition, including public street, access easement, and permanent easement
- Obtained information on existing easements



Preferred Knox Avenue design



- Fare collection equipment
 - Light rail, Cubic ticket vending machines
 - Validators located at platform entry points
- Accessibility features
 - Light rail projects pursuing between-car barriers, speakers, door indicator mat
 - Orange Line pursuing tactile mapping and wayfinding features, door indicator mat
- Customer information and wayfinding
 - Option for digital information kiosk
 - LCD real-time signage
 - Rider alert information



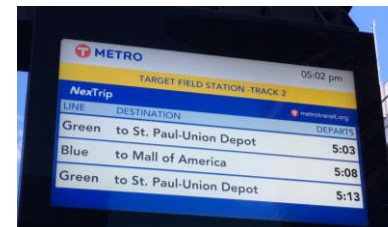
Cubic TVM



Tactile door indicator mat



Guidetiles



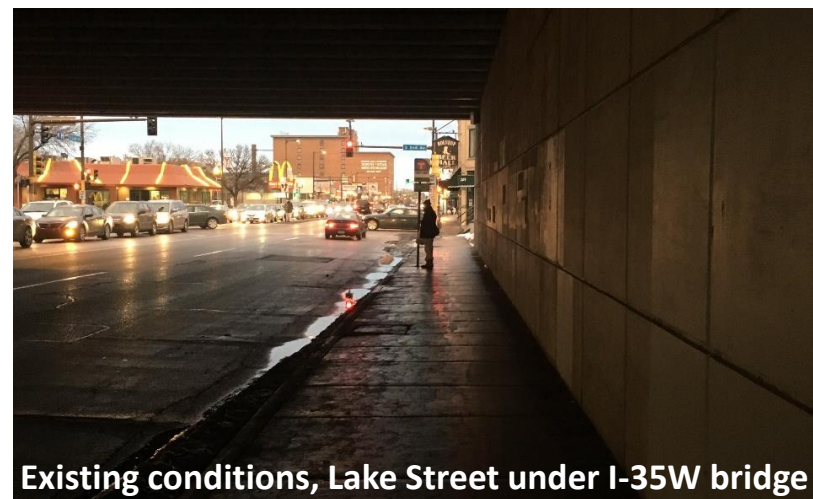
LCD real-time signage

- May 10th, Kingfield
 - Presentation on construction phasing and transit detours with MnDOT, City of Minneapolis and Hennepin County
- May 11th, Midtown Greenway
 - Presentation on construction phasing and transit detours with MnDOT, City of Minneapolis and Hennepin County
- May 22nd, 35W/Lake Street DBE contractor networking event
 - MnDOT event to introduce 35W/Lake St project to DBE contractors
- May 23rd, State of the Commute event
 - Luncheon to connect employers with transportation services, hosted at Best Buy HQ
- May 23rd, Dakota County Regional Railroad Authority
 - Will discuss station naming, 60% layouts, ideas collected from our design/public art walking tour in Heart of the City

- 60% design submittal
 - 76th Street
 - American Blvd
 - Knox Ave Transitway
 - Downtown
 - 46th Street
- Real estate appraisals
- Small Starts application update
- Legislative update
- Agreements



Existing conditions, I-35W at Lake Street



Existing conditions, Lake Street under I-35W bridge

Get more information or sign-up for our newsletter at
www.metrotransit.org/orangeline

