



Orange Line TAC Bloomington Public Works July 11, 2017

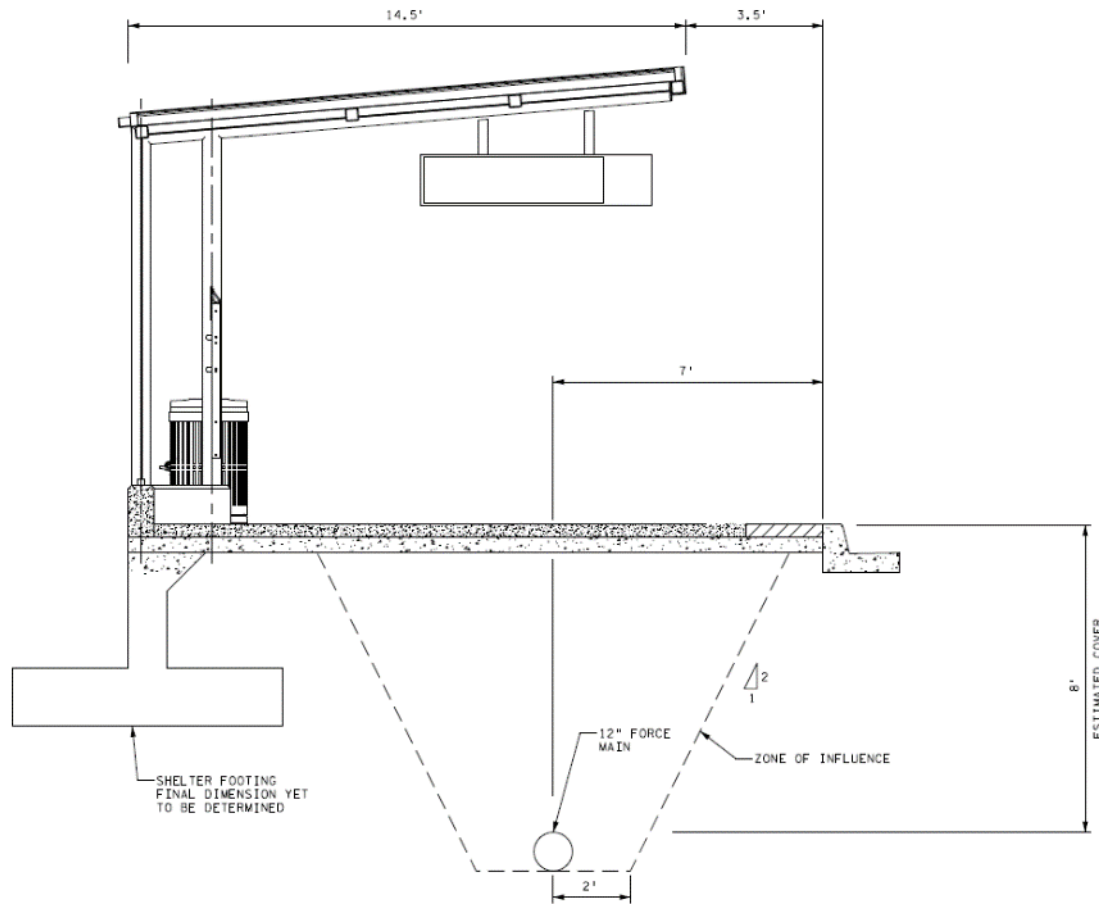
76th Street Station



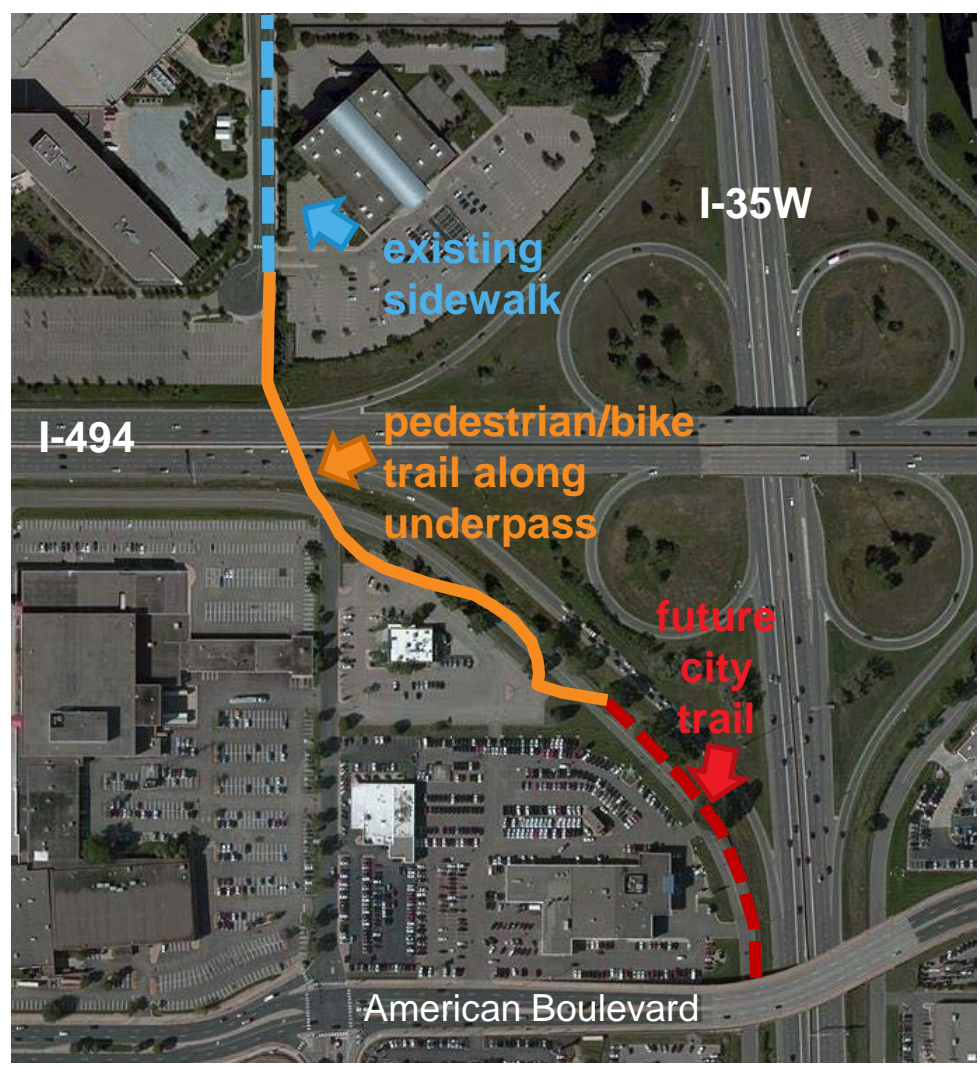
76th Street southbound platform



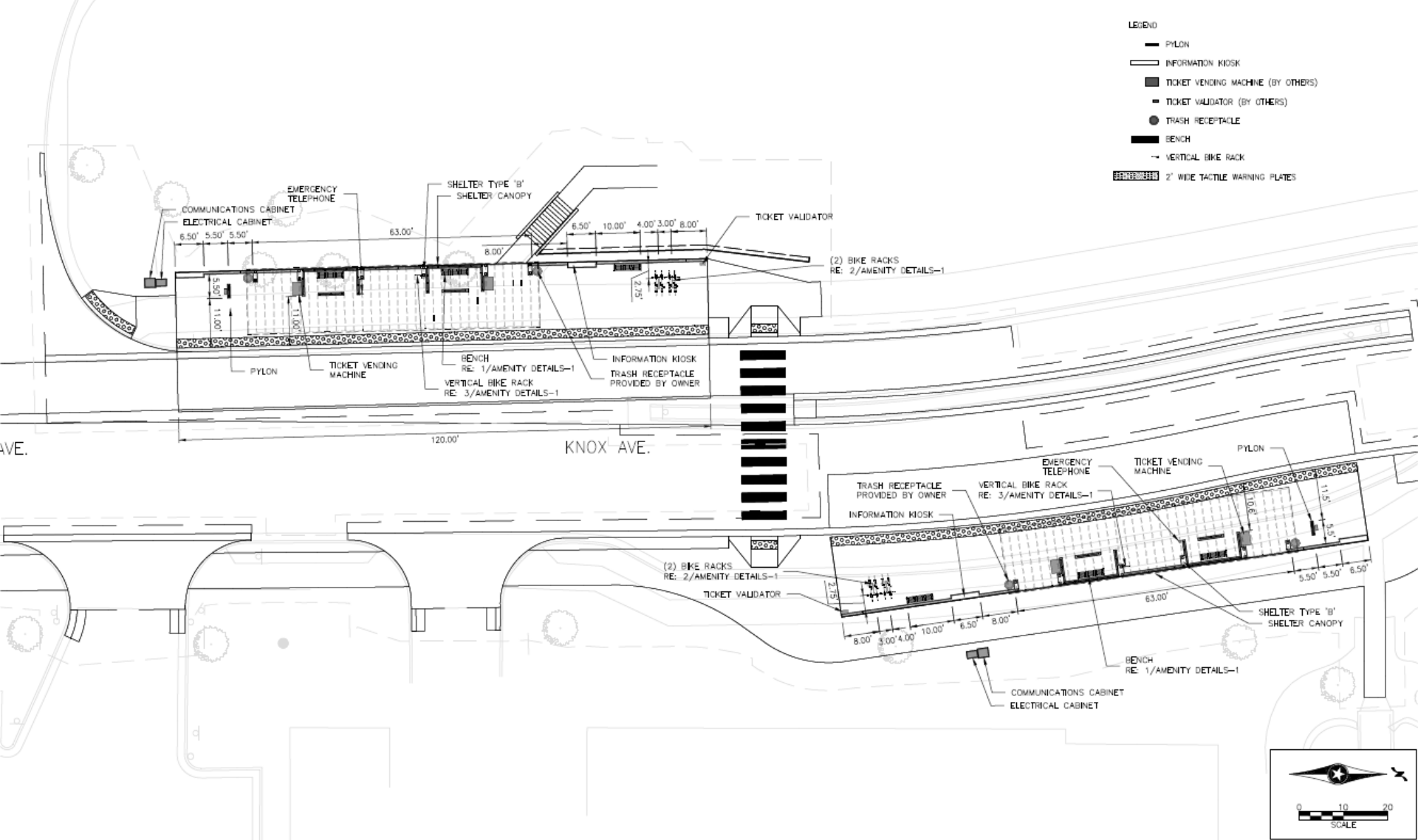
- Studied potential platform locations both nearside and farside the Best Buy driveway
- Presence of an existing sanitary force main has led to revised design
- Combine through sidewalk and BRT platform to avoid shelter foundation over force main



- Pedestrian and bicycle trail will be constructed along Knox Ave Transitway under 494
- Connects to existing City of Richfield sidewalk on north side
- City of Bloomington planning a trail connection on the south side

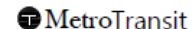


76th Street Station



- LEGEND**
- PYLON
 - INFORMATION KIOSK
 - TICKET VENDING MACHINE (BY OTHERS)
 - TICKET VALIDATOR (BY OTHERS)
 - TRASH RECEPTACLE
 - ▬ BENCH
 - ↕ VERTICAL BIKE RACK
 - ▨ 2' WIDE TACTILE WARNING PLATES

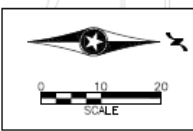
DESIGNED:	CHECKED:



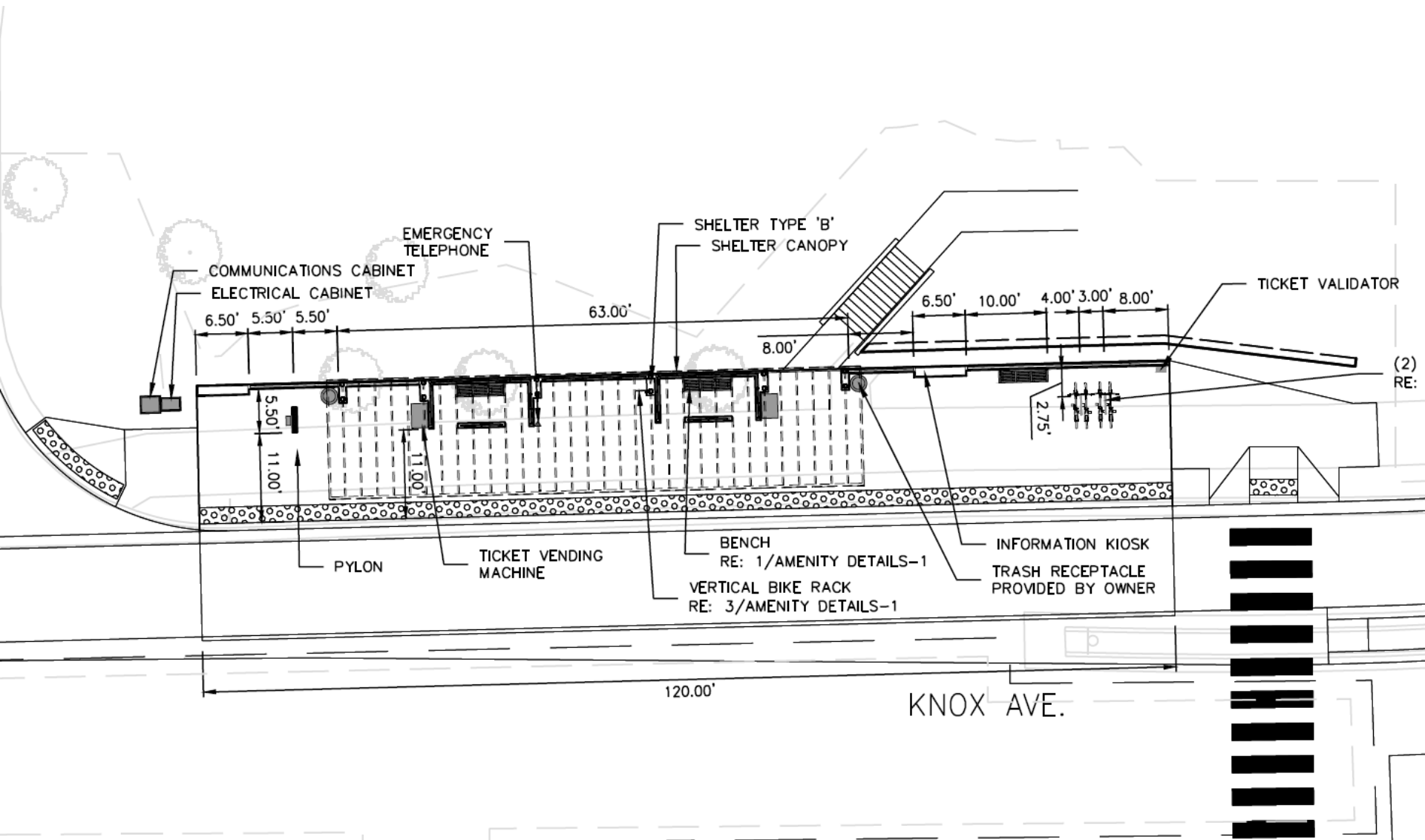
I HEREBY CERTIFY THAT THIS PLAN, SPECIFICATION OR REPORT WAS PREPARED BY ME OR UNDER MY DIRECT SUPERVISION AND THAT I AM A QUALY LICENSED PROFESSIONAL ENGINEER UNDER THE LAWS OF THE STATE OF MINNESOTA.

CERTIFIED BY: _____

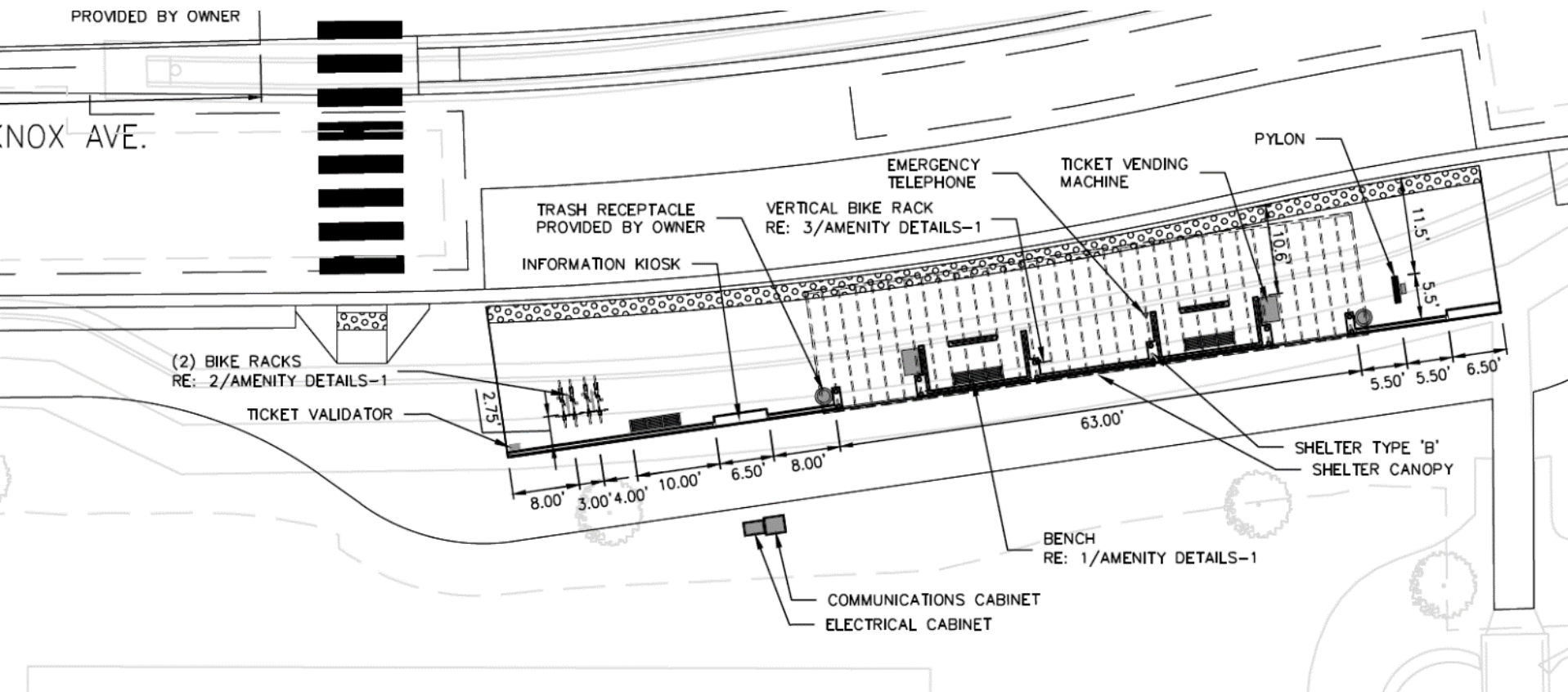
**76TH STREET AND AMERICAN BOULEVARD STATIONS
URBAN DESIGN PLAN - 76TH STREET**



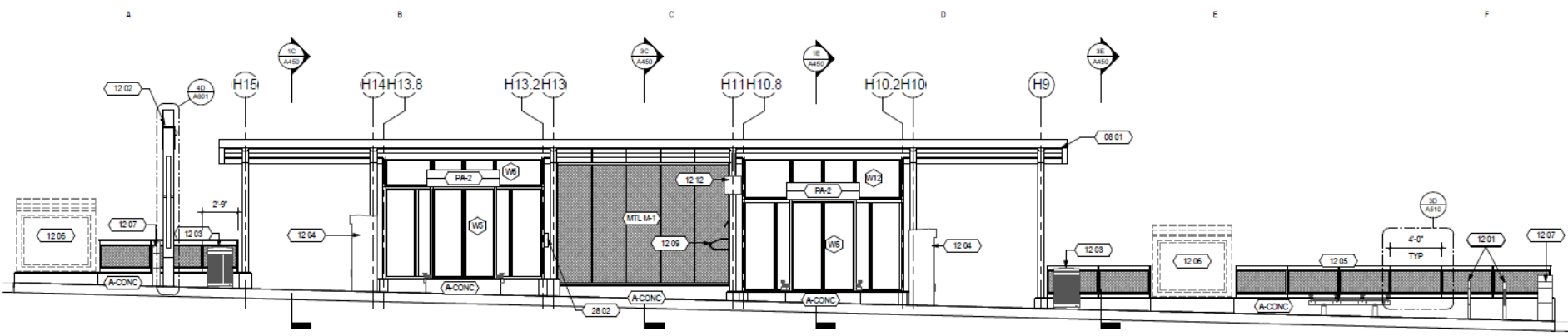
76th Street Station – Southbound Platform



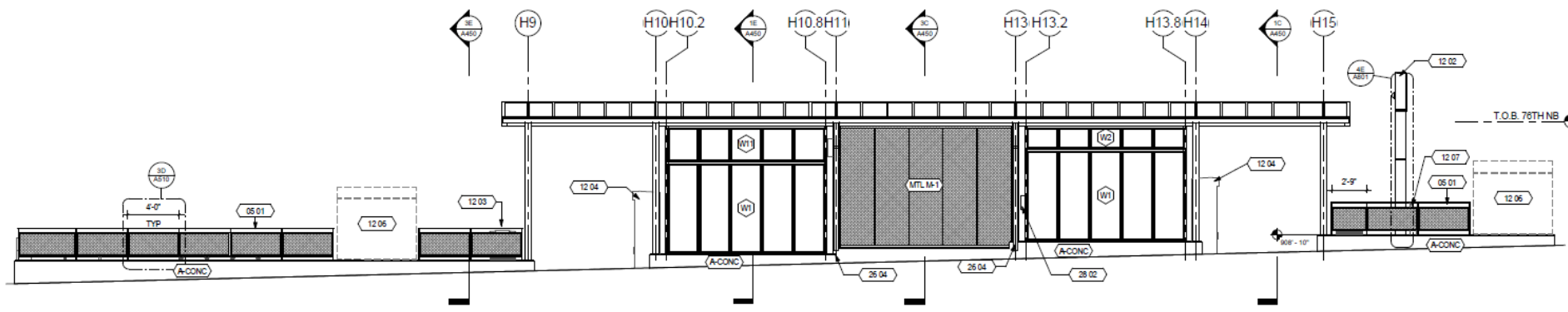
76th Street Station – Northbound Platform



76th Street Station – Northbound Elevation



1A 76TH STREET NORTHBOUND - ELEVATION



1B 76TH STREET NORTHBOUND - ELEVATION

GENERAL NOTES

- 1.
- 2.
- 3.
- 4.

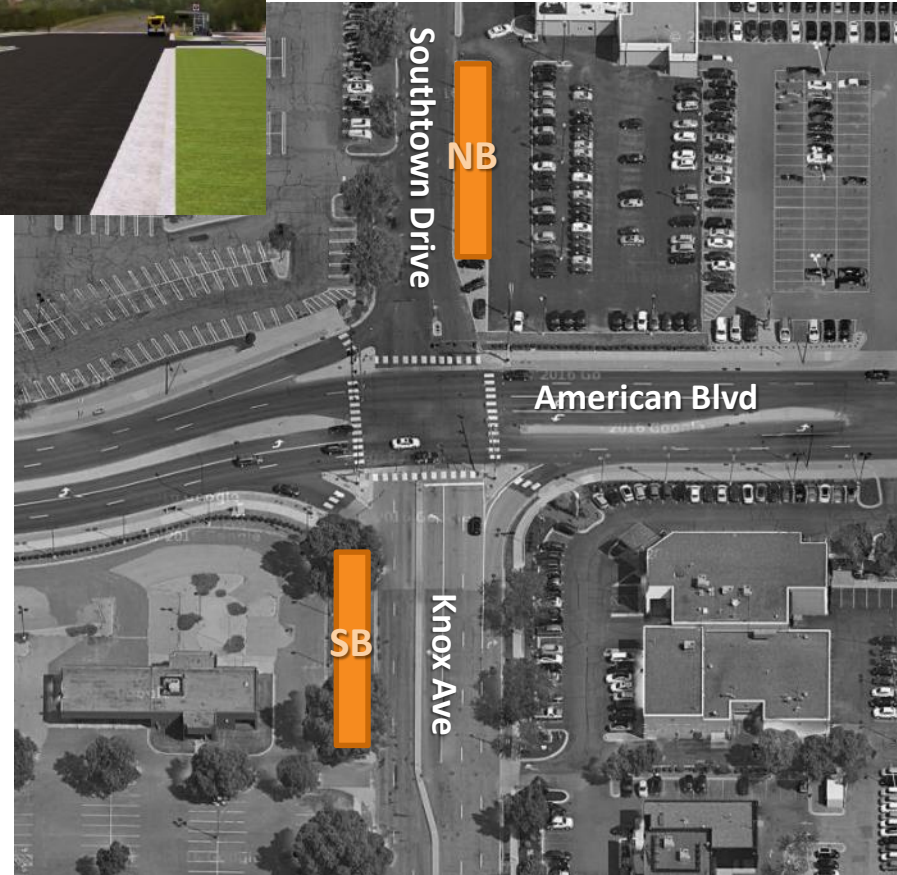
KEYNOTES

- 05 01 GUARDRAIL WITH METAL MESH
- 08 01 POLYCARBONATE CANOPY
- 12 01 MOUNTED LOOPED BIKE RACK, SEE URBAN DESIGN DWGS
- 12 02 DWGS MARKER
- 12 03 WASTE RECEPTACLE, SEE URBAN DESIGN DWGS
- 12 04 TICKETING VENDING MACHINE, SEE COMMUNICATIONS DESIGN DWGS
- 12 05 BENCH, SEE URBAN DESIGN DWGS
- 12 06 KIOSK, OWNER PROVIDED
- 12 07 SMART CARD VALIDATOR, SEE URBAN DESIGN DWGS
- 12 09 VERTICAL BIKE RACK
- 12 12 VARIABLE MESSAGE SIGN, SEE COMMUNICATIONS DRAWINGS
- 28 04 LIGHT, SEE ELECTRICAL DRAWINGS
- 28 02 ETEL, SEE COMMUNICATION DRAWINGS

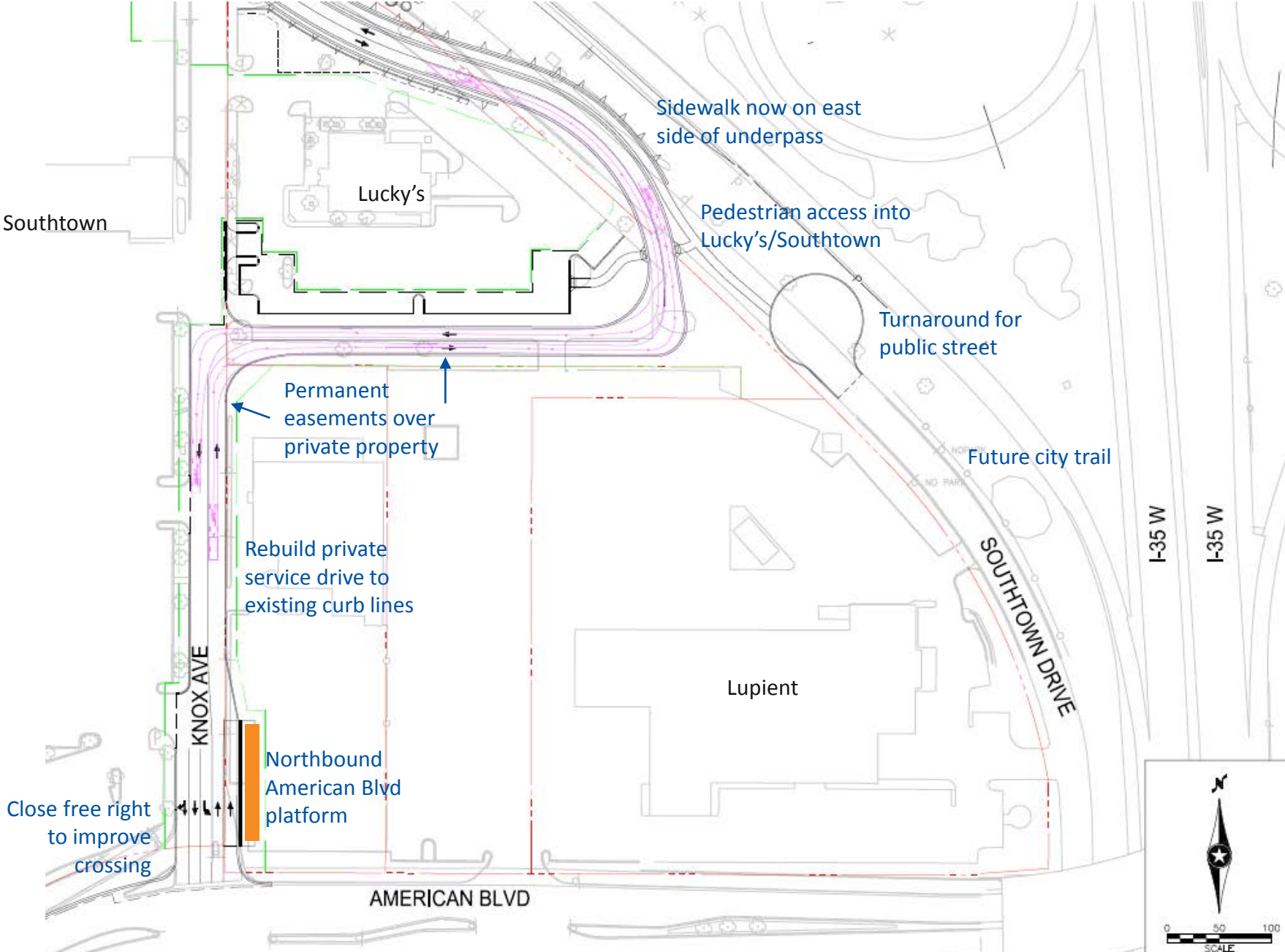
MATERIAL OR TYPE KEYNOTES

- A-CONC ARCHITECTURAL CONCRETE
- MTL M-1 EXPANDED METAL MESH
- PA-2 SIGNAGE

American Boulevard Station











Preferred Knox Avenue design

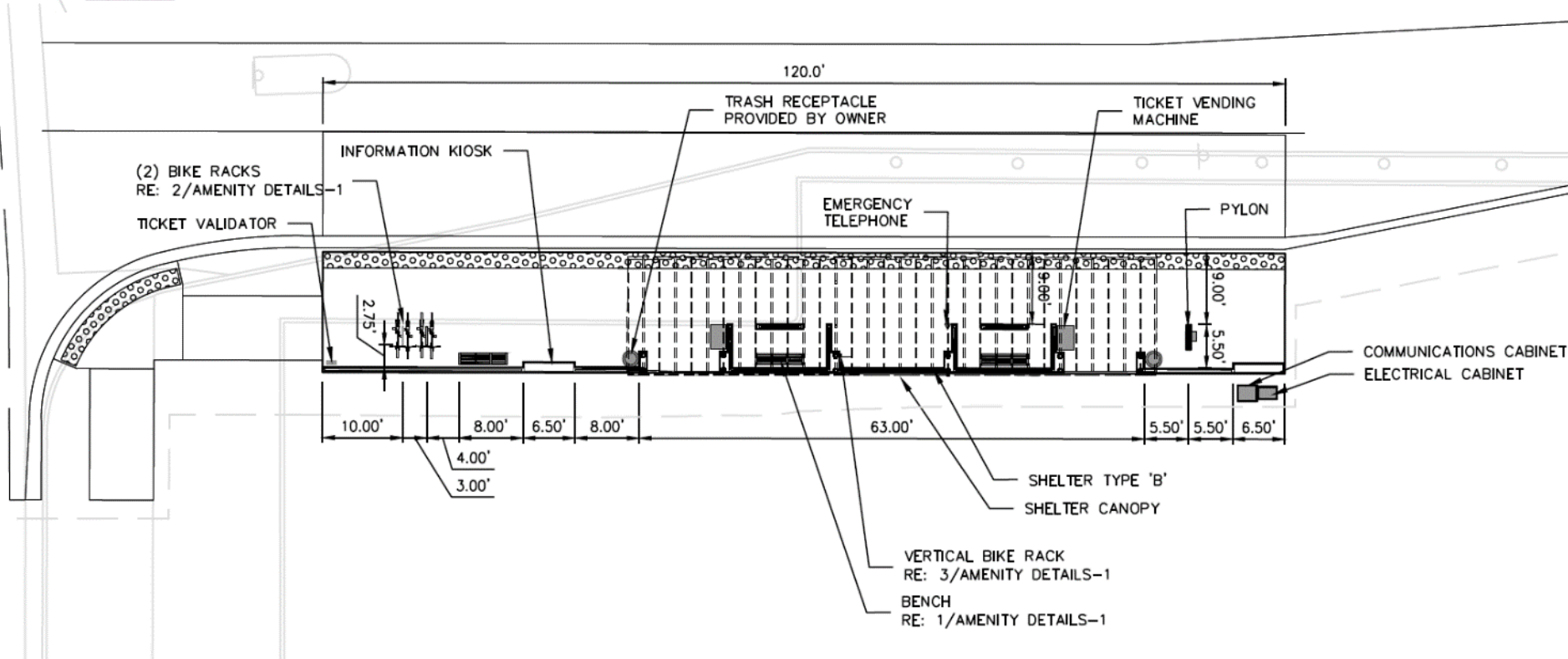


American Boulevard – Northbound Platform

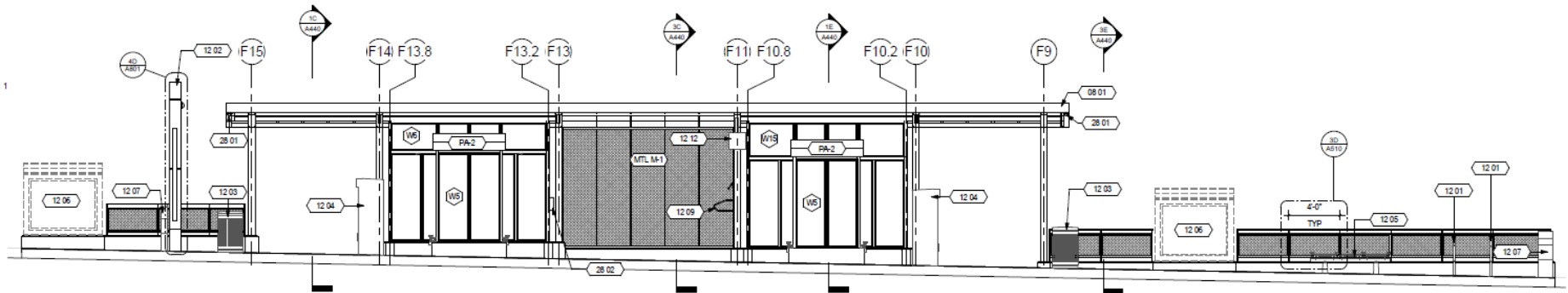


LEGEND

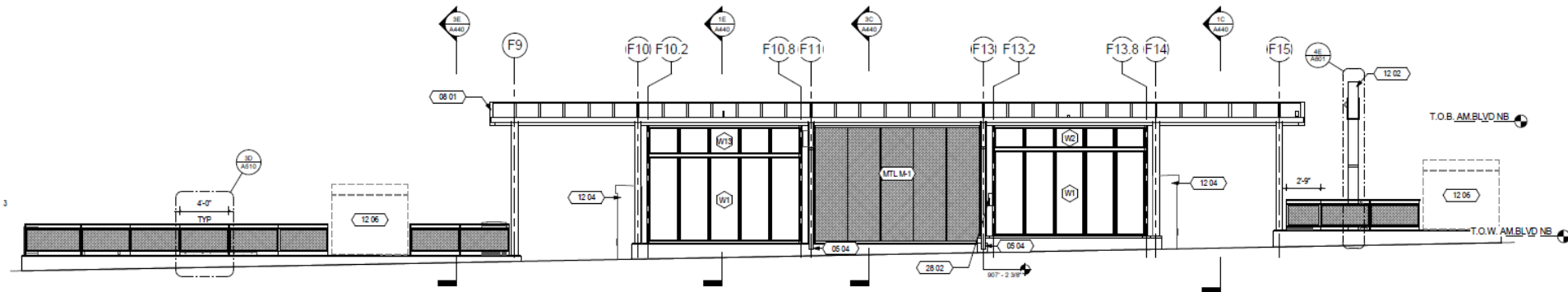
-  PYLON
-  INFORMATION KIOSK
-  TICKET VENDING MACHINE (BY OTHERS)
-  TICKET VALIDATOR (BY OTHERS)
-  TRASH RECEPTACLE
-  BENCH
-  VERTICAL BIKE RACK
-  2' WIDE TACTILE WARNING PLATES



American Boulevard – Northbound Elevation



13 AMERICAN BOULEVARD NORTHBOUND - ELEVATION



34 AMERICAN BOULEVARD NORTHBOUND - ELEVATION

GENERAL NOTES

- 1.
- 2.
- 3.
- 4.

KEYNOTES

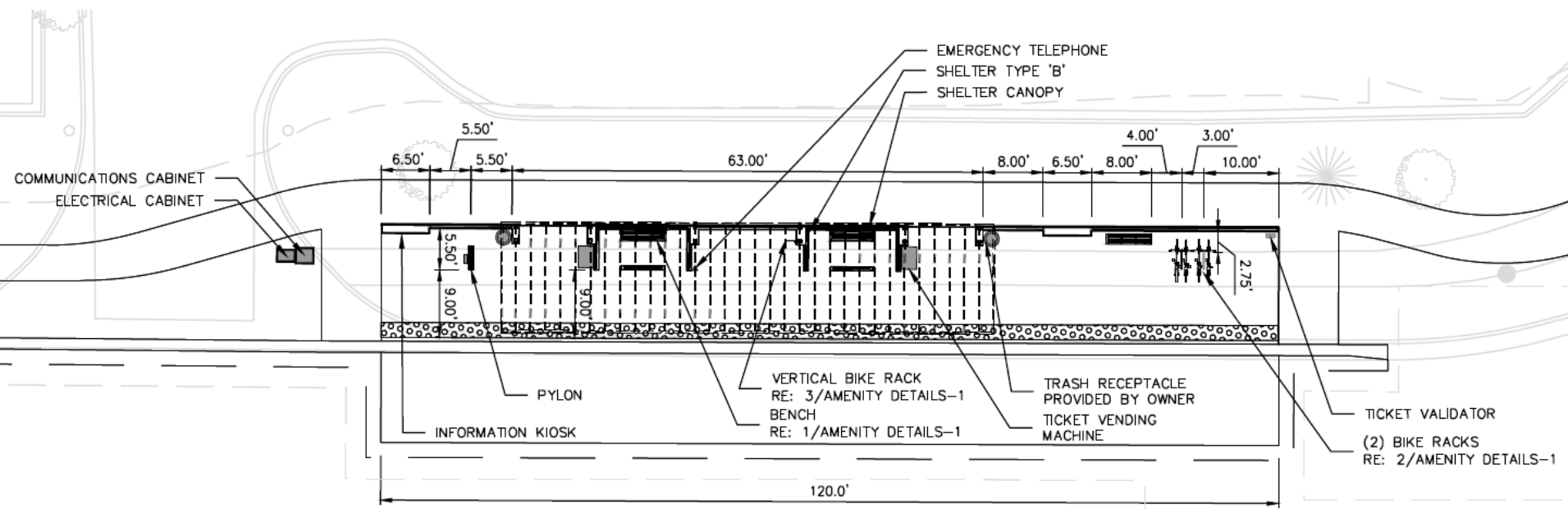
- 05 04 DOWNSPOUT
- 08 01 POLYCARBONATE CANOPY
- 12 01 MOUNTED LOOPED BIKE RACK, SEE URBAN DESIGN DWGS
- 12 02 MARKER
- 12 03 WASTE RECEPTACLE, SEE URBAN DESIGN DWGS
- 12 04 TICKETING VENDING MACHINE, SEE COMMUNICATIONS DESIGN DWGS
- 12 06 BENCH, SEE URBAN DESIGN DWGS
- 12 06 KIOSK, OWNER PROVIDED
- 12 07 SMART CARD VALIDATOR, SEE URBAN DESIGN DWGS
- 12 09 VERTICAL BIKE RACK
- 12 12 VARIABLE MESSAGE SIGN, SEE COMMUNICATIONS DRAWINGS
- 28 01 SECURITY CAMERA, SEE COMMUNICATION DRAWINGS
- 28 02 ETEL, SEE COMMUNICATION DRAWINGS

MATERIAL OR TYPE KEYNOTES

- A-CONC ARCHITECTURAL CONCRETE
- MTL M-1 EXPANDED METAL MESH
- PA-2 SIGNAGE

DRAWING NAME
A340

American Boulevard – Southbound Platform

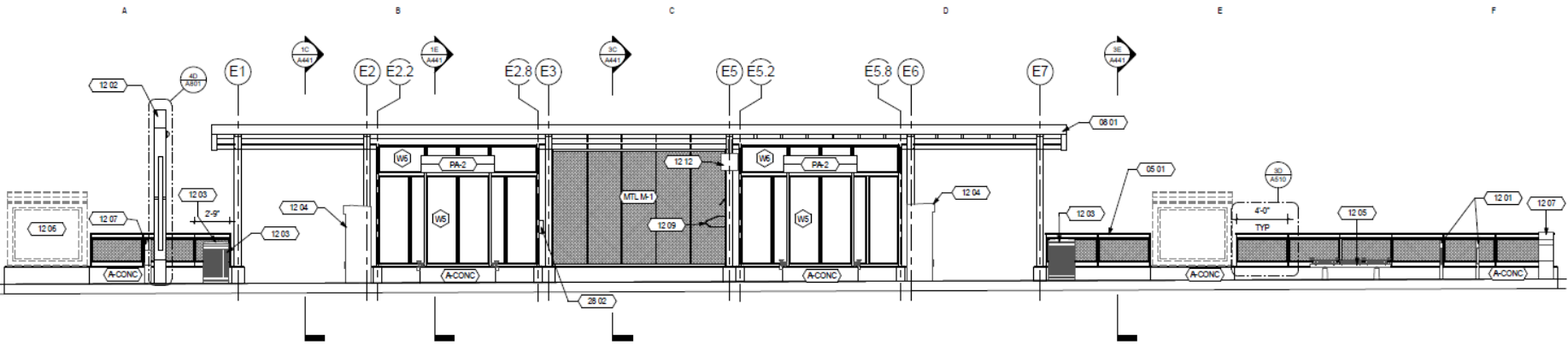


LEGEND

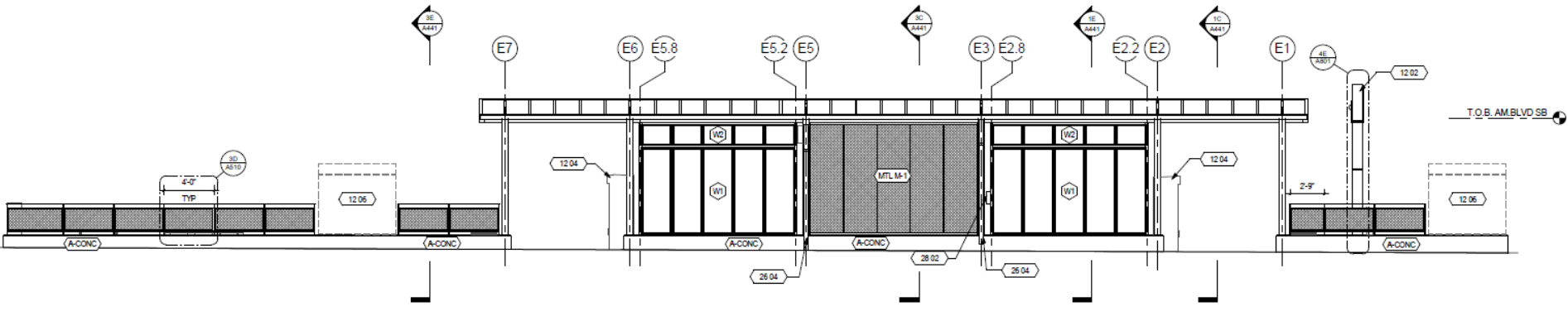
- PYLON
- INFORMATION KIOSK
- TICKET VENDING MACHINE (BY OTHERS)
- TICKET VALIDATOR (BY OTHERS)
- TRASH RECEPTACLE
- BENCH
- VERTICAL BIKE RACK
- 2' WIDE TACTILE WARNING PLATES



American Boulevard – Southbound Elevation



1A AMERICAN BOULEVARD SOUTHBOUND – ELEVATION



1A AMERICAN BOULEVARD SOUTHBOUND – ELEVATION

GENERAL NOTES

- 1.
- 2.
- 3.
- 4.

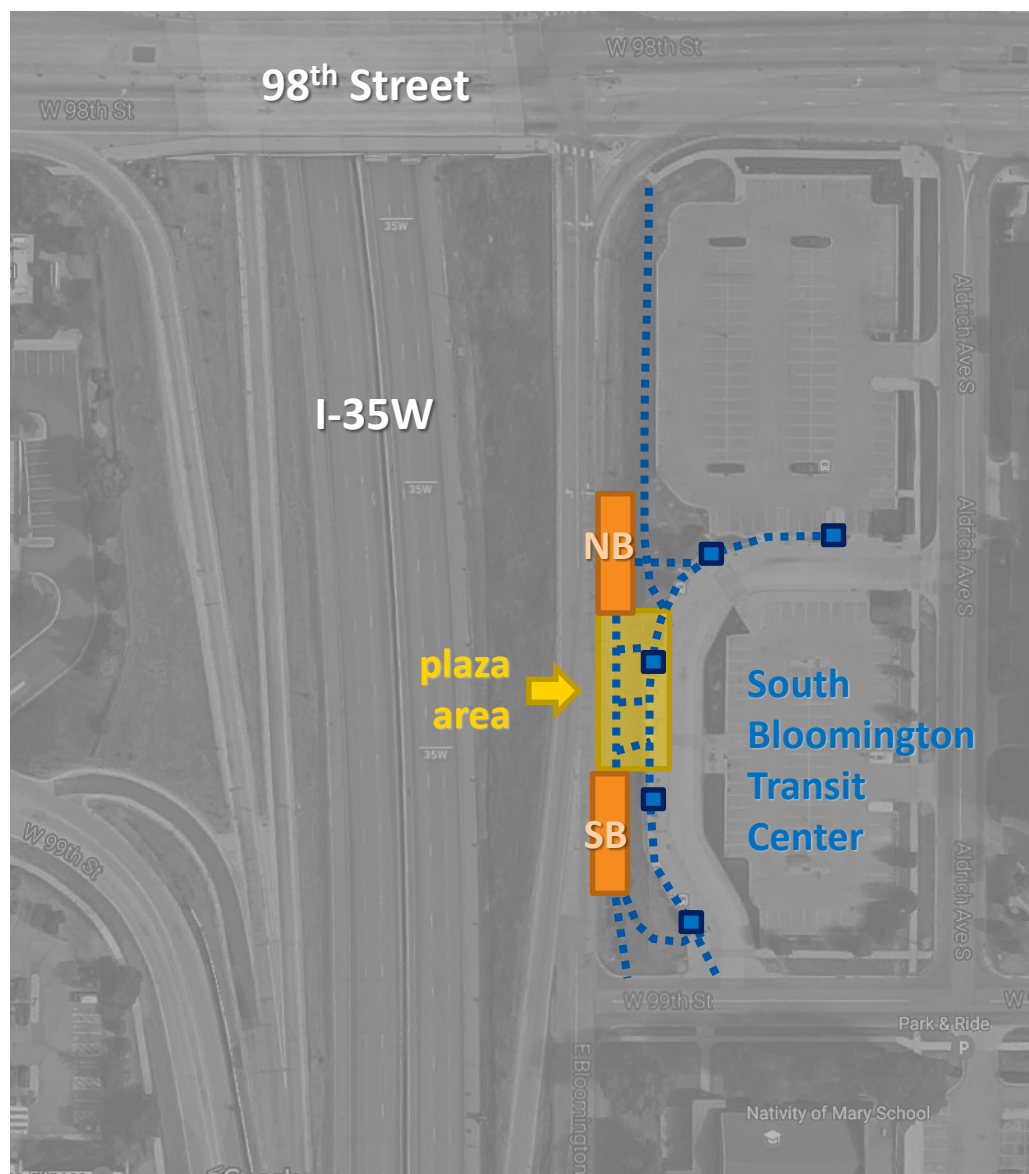
KEYNOTES



- 05 01 GUARDRAIL WITH METAL MESH
- 08 01 POLYCARBONATE CANOPY
- 12 01 MOUNTED LOOPED BIKE RACK, SEE URBAN DESIGN DWGS
- 12 02 MARKER
- 12 03 WASTE RECEPTACLE, SEE URBAN DESIGN DWGS
- 12 04 TICKETING VENDING MACHINE, SEE COMMUNICATIONS DESIGN DWGS
- 12 05 BENCH, SEE URBAN DESIGN DWGS
- 12 06 KIOSK, OWNER PROVIDED
- 12 07 SMART CARD VALIDATOR, SEE URBAN DESIGN DWGS
- 12 09 VERTICAL BIKE RACK
- 12 12 VARIABLE MESSAGE SIGN, SEE COMMUNICATIONS DRAWINGS
- 28 04 LIGHT, SEE ELECTRICAL DRAWINGS
- 28 02 ETEL, SEE COMMUNICATION DRAWINGS

MATERIAL OR TYPE KEYNOTES

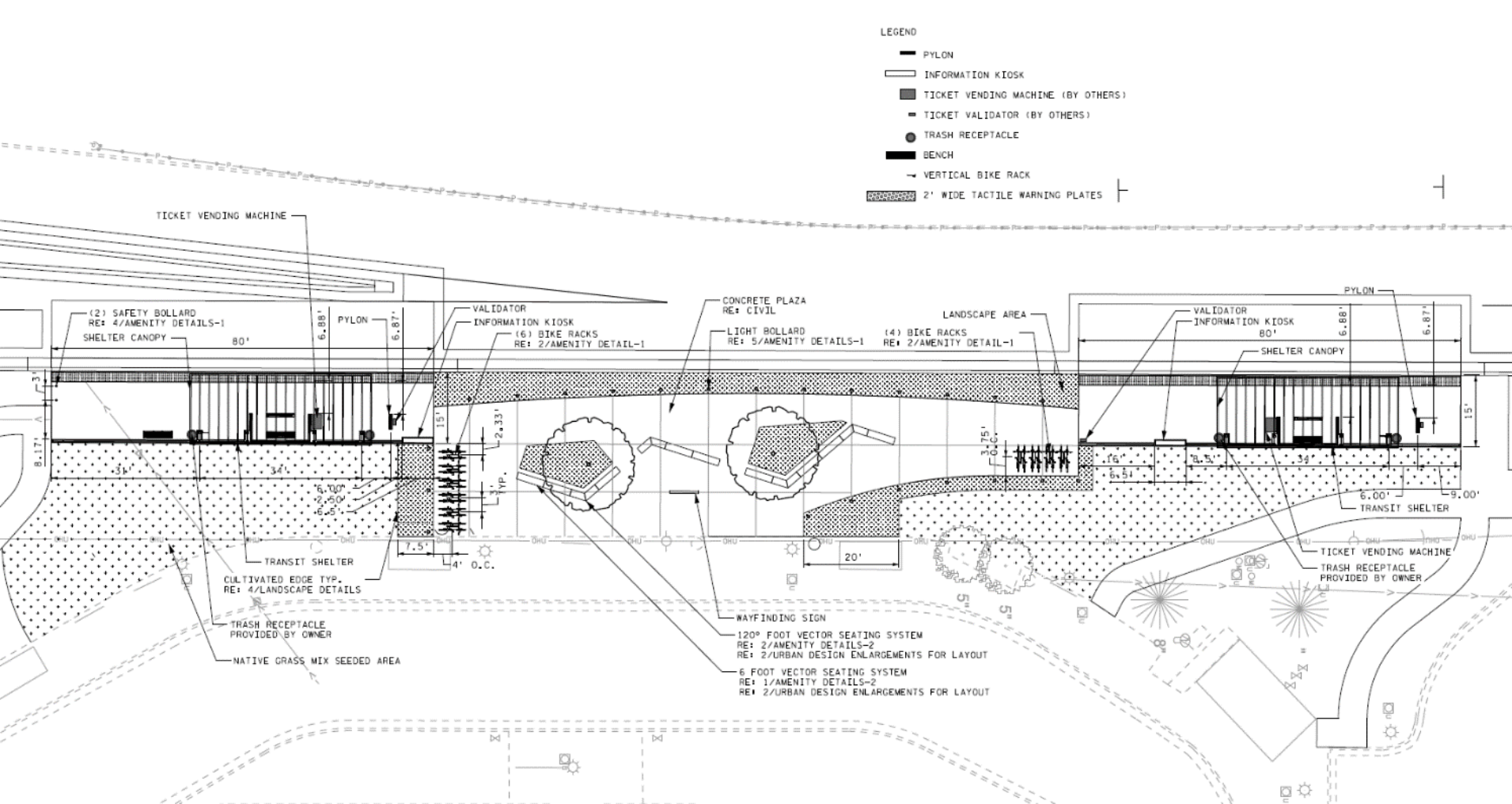
- A-COCONC ARCHITECTURAL CONCRETE
- MTL M-1 EXPANDED METAL MESH
- PA-2 SIGNAGE

98th Street Station – Plaza Design

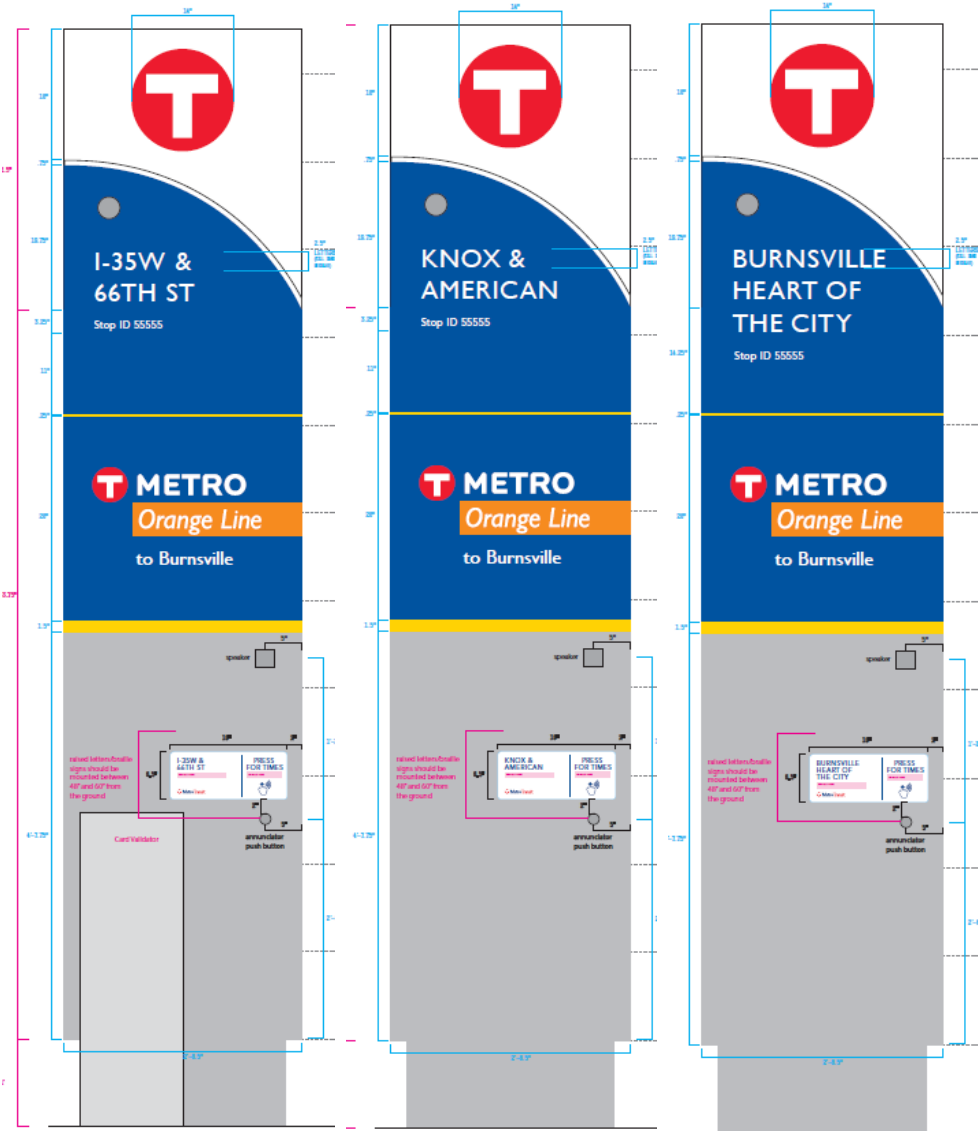
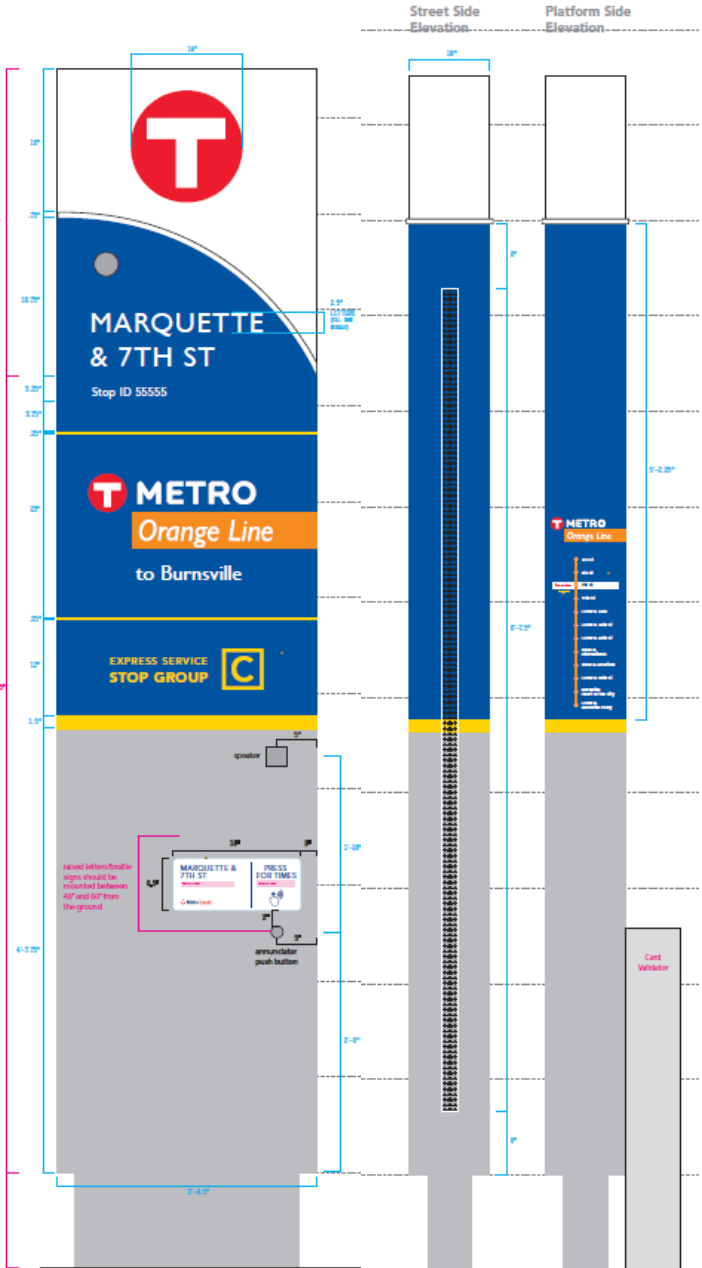


-  Connecting service bus stops
-  walking routes

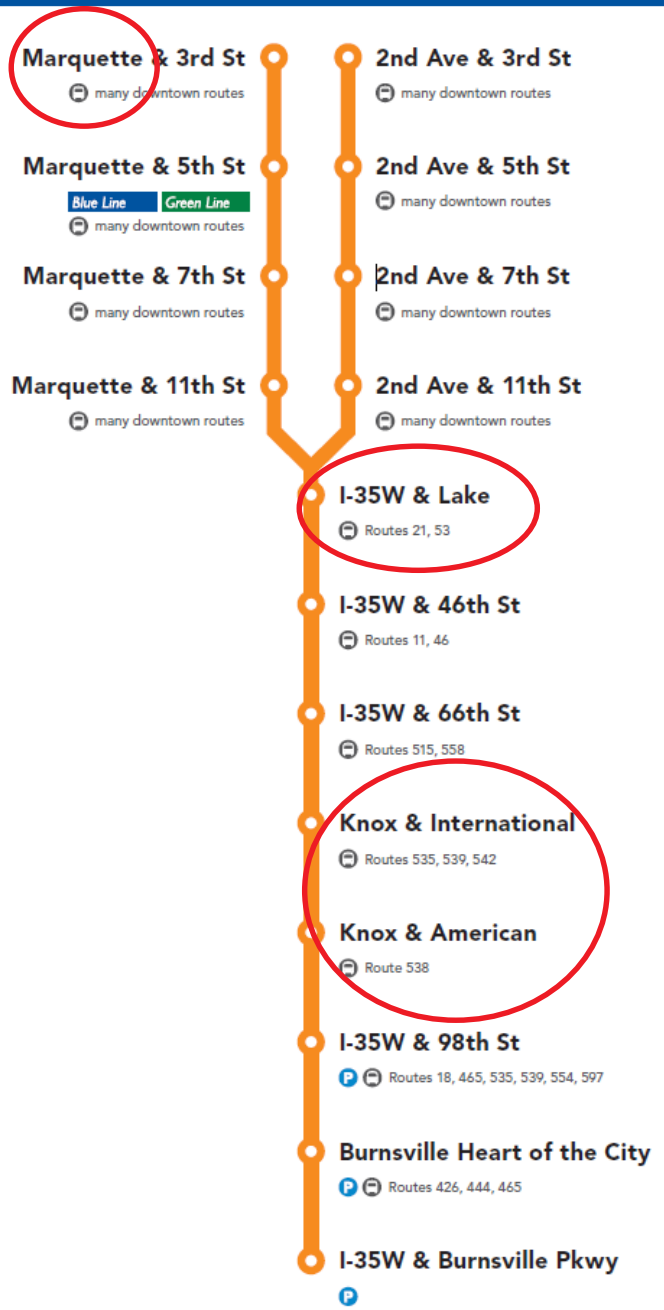




Updated Pylon Design

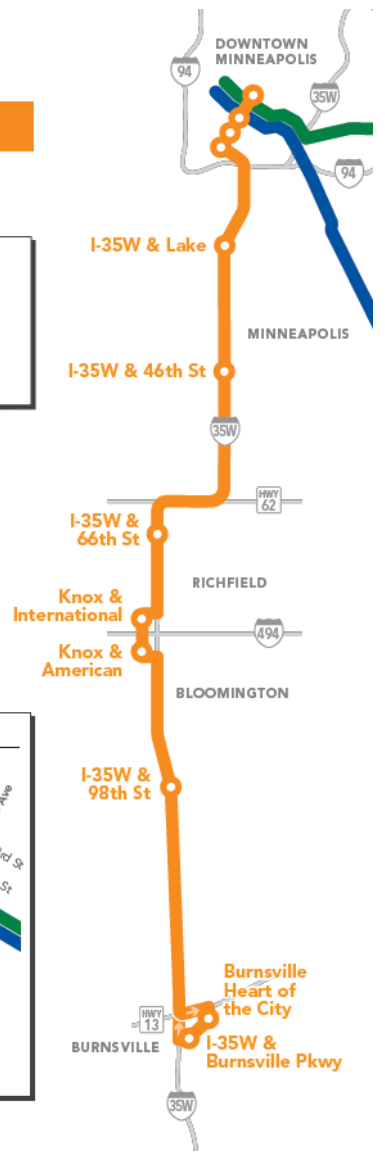


Changes to Previous Station Names



METRO Orange Line

- METRO Orange Line (Bus Rapid Transit)
- METRO Blue Line (Light Rail)
- METRO Green Line (Light Rail)



July 26th, 8:30am to 10:30am

VEAP, Bloomington

Invitees:

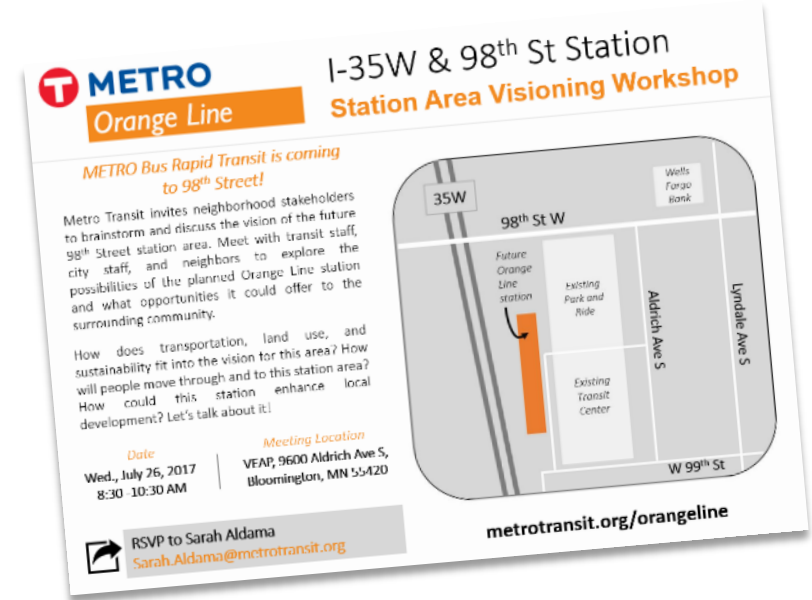
Major neighborhood stakeholders, landowners, institutions, and public agencies

Discussion tables:

Transportation, Land Use, and Sustainability

Goals:

- Brainstorm long-term needs and vision for this area
- Provide city planning staff with initial input and ideas that could be used for station area planning and Comprehensive Plan updates
- Promote the Metro Transit TOD office as a resource



- Begin construction
 - Execute MnDOT partnership agreement
 - Finalize 35W phasing schedules with MnDOT and selected contractor
- Continue to seek \$74.1M FTA Small Starts funding
 - Update cost estimates and submit project information for FTA Annual report
 - Project plan updates
 - Monitor FY19 appropriations process and prepare for Small Starts Grant Agreement
- Seek full corridor construction in 2018
 - Complete design of 11 stations and Knox Avenue Transitway
 - Initiate appraisals for right-of-way (ROW) needs
 - Seek Council approval to acquire project ROW
 - Finalize third party agreements
- Continue public outreach and communication

