



METRO Gold Line BRT CMC Meeting

June 7, 2018

- Welcome
- Project Development Update
- Issues Resolution Process
- Stakeholder and Public Engagement Update
- Right of Entry Process Overview
- CMC Next Meeting



Project Development Update

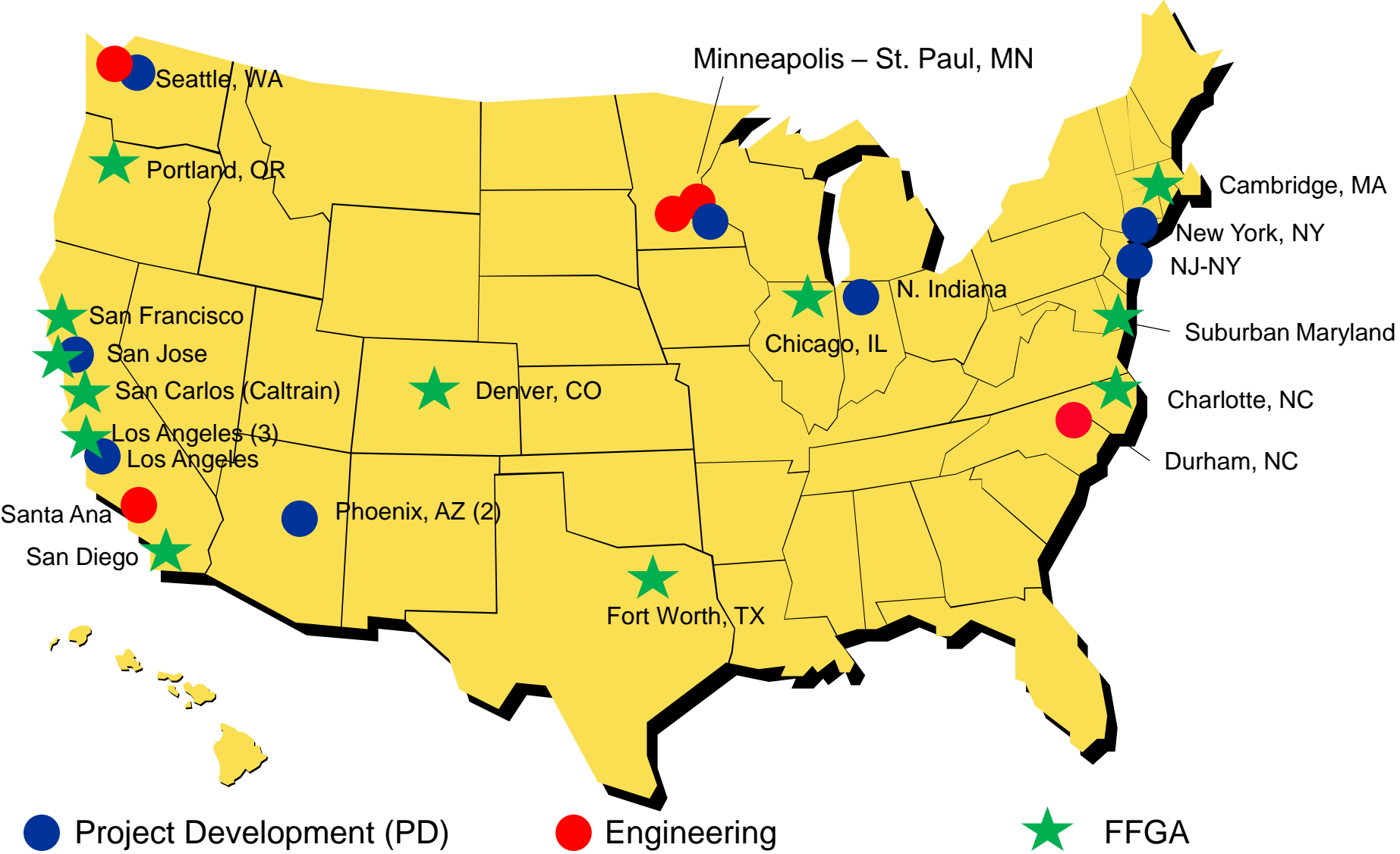


- CBAC kick-off meeting held May 29
- 26 members representing station area communities and businesses

- Members were invited to express interest in Co-chair positions
- Met Council Chair to select - CBAC Co-Chairs
- Co-Chairs will be at next CMC meeting

| Station | Name |
|---------------------------------------|----------------------------|
| Mounds Blvd - Business | Mary Brandt |
| Mounds Blvd - Resident | Regina Rippel |
| Earl Street - Business | Koua Lee |
| Earl Street - Resident | Ernesto Ortiz-Diaz |
| Etna Street - Business | Hussein Khatib |
| Etna Street - Resident | Jessica Johnson |
| White Bear Avenue - Business | Jorge Samper Zelaya |
| White Bear Avenue - Resident | Joseph Skeen |
| Sun Ray Avenue- Business | Doug Swalboski |
| Sun Ray Avenue - Resident | Chai Lee |
| Maplewood - Business | Torin Gustafson |
| Maplewood - Resident | Darrell Paulsen |
| Greenway Avenue - Business | Tom Gianetti |
| Greenway Avenue - Resident (Landfall) | Donald Gonser |
| Greenway Avenue - Resident (Oakdale) | Allison Hawley March |
| Helmo Ave - Business | Pat Cosgrove |
| Helmo Ave - Resident | Nancy Volkman |
| Tamarack - Business | Steve Morris |
| Tamarack - Resident | Nyagatare Valens |
| Woodbury Theater - Business | Molly Gagan-Vlaisavljevich |
| Woodbury Theater - Resident | Heidi Schumacher |
| At-Large | Rebecca Nelson |
| At-Large | D'Angelos Svenkeson |
| At-Large | Robert Crawford |
| At-Large | Reva Jones-Simmons |
| At-Large | Richard Kramer |

Peer “New Starts” Projects (February 2018)



Source: Feb 2018 FTA CIG Report

- 2-year deadline to complete (federal requirement)
- \$25 million budget
- The PD Phase advances design and refines scope
 - Planning is complete and implementation has begun
 - Changes that are outside the environmental Area of Potential Effect (APE) will have an impact to the PD cost and schedule

Gold Line Bus Rapid Transit Project Timeline



| PRE-PROJECT DEVELOPMENT | PROJECT DEVELOPMENT January 2018-January 2020 | ENGINEERING 1-2 Years | CONSTRUCTION 2-3 Years | REVENUE SERVICE 2024 |
|----------------------------------|---|--------------------------|---------------------------|-------------------------|
| | <div data-bbox="256 508 1010 611" style="background-color: #c8e6c9; padding: 5px; text-align: center;">ENVIRONMENTAL REVIEW</div> <div data-bbox="256 689 1307 792" style="background-color: #bbdefb; padding: 5px; text-align: center;">DESIGN ADVANCEMENT</div> | | | |
| ONGOING PUBLIC ENGAGEMENT | | | | |

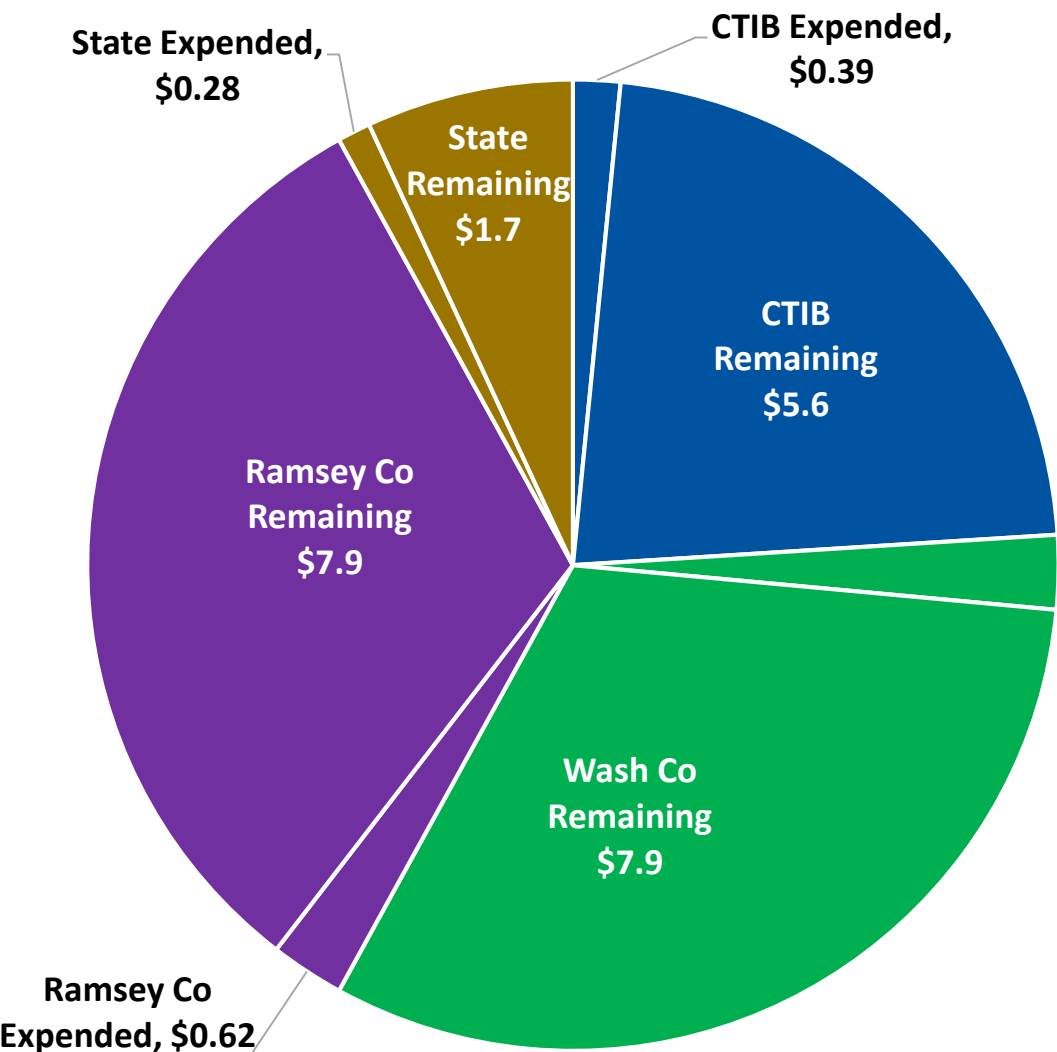
GPO Tasks for Project Development



- Tasks to complete by Oct 2019 to meet PD deadline:

| Task | Timeline |
|--|---|
| Select a Locally Preferred Alternative (LPA) | Complete |
| Adopt the LPA into fiscally constrained metropolitan transportation plan | Complete |
| Issues resolution and environmental scope refinement within IRTs | Mar 2018 – July 2018 |
| Final environmental scope presented to TAC | July 11, 2018 |
| Complete the environmental review process under NEPA <ul style="list-style-type: none"> • Final environmental scope previewed by CMC • Final environmental scope confirmed by CMC • Technical work to produce and review environmental document, comment period | Aug 2, 2018 Sept 6, 2018 Sept 2018 – Aug 2019 |
| Determine final scope, costs, and and funding sources | 2019 |
| Complete at least 30 percent design | Q3 2019 |
| Obtain commitment for at least 30 percent of the local funding | Q3 2019 |
| Develop sufficient information for FTA to assign a project rating | October 2019 |

PD Costs Expended to Date



| Funding Source | \$25M Project Development | \$420M Overall (Anticipated) |
|--------------------|---------------------------|------------------------------|
| Federal New Starts | - | 45% |
| Ramsey County | \$8.5M, 34% | 26.5% |
| Washington County | \$8.5M, 34% | 26.5% |
| CTIB | \$6M, 24% | 1.5% |
| State | \$2M, 8% | 0.5% |

(in Millions)

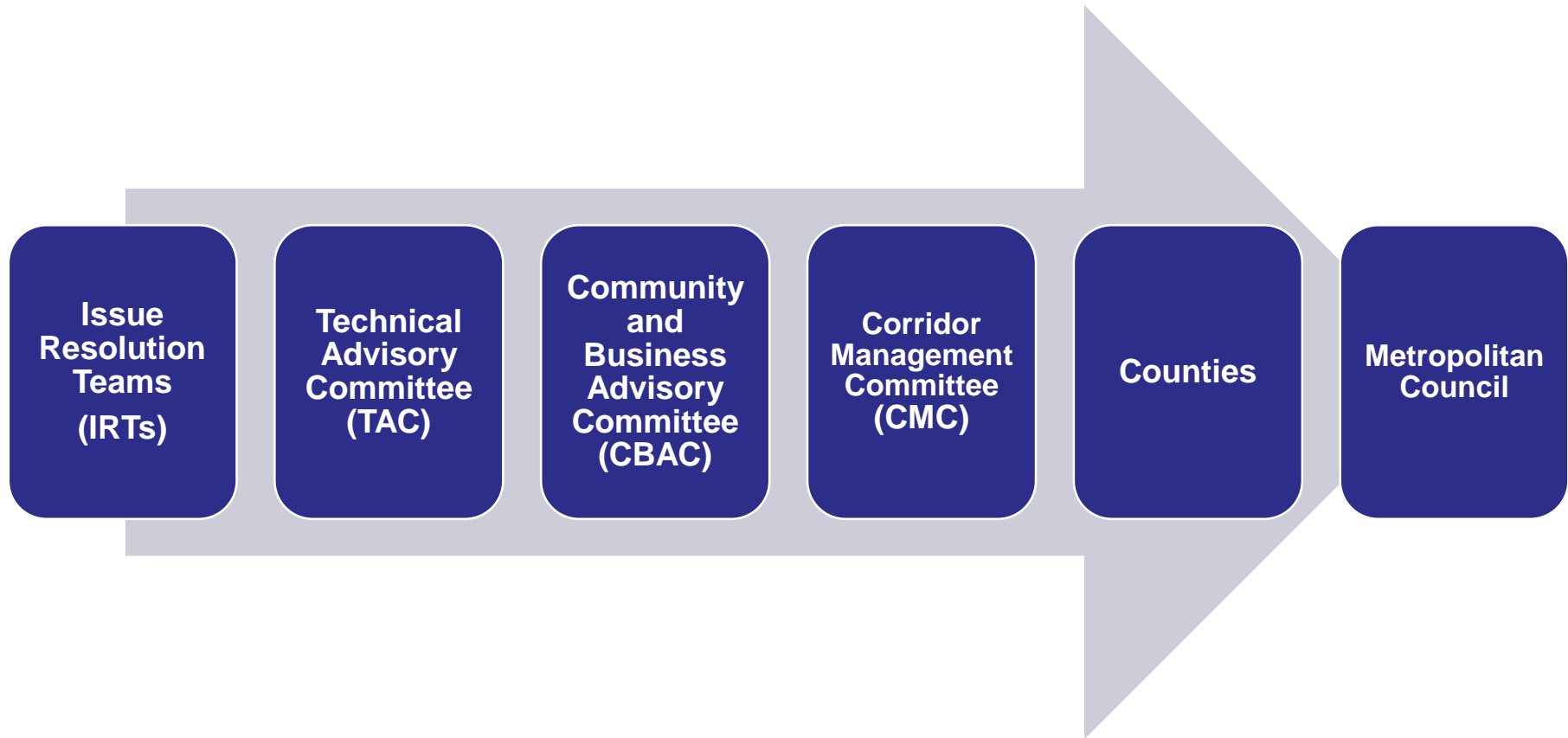
Issues Resolution Process

Case Study: McKnight Road

**Tier 1
Goals**

- **Improve Mobility (Ridership & Travel Time)**
- **Cost-Effective & Economically Viable**
- **Support Economic Development**
- **Protect the Natural Environment**
- **Preserve & Protect Quality of Life**

Gold Line Committee Structure



Issues Resolution Teams

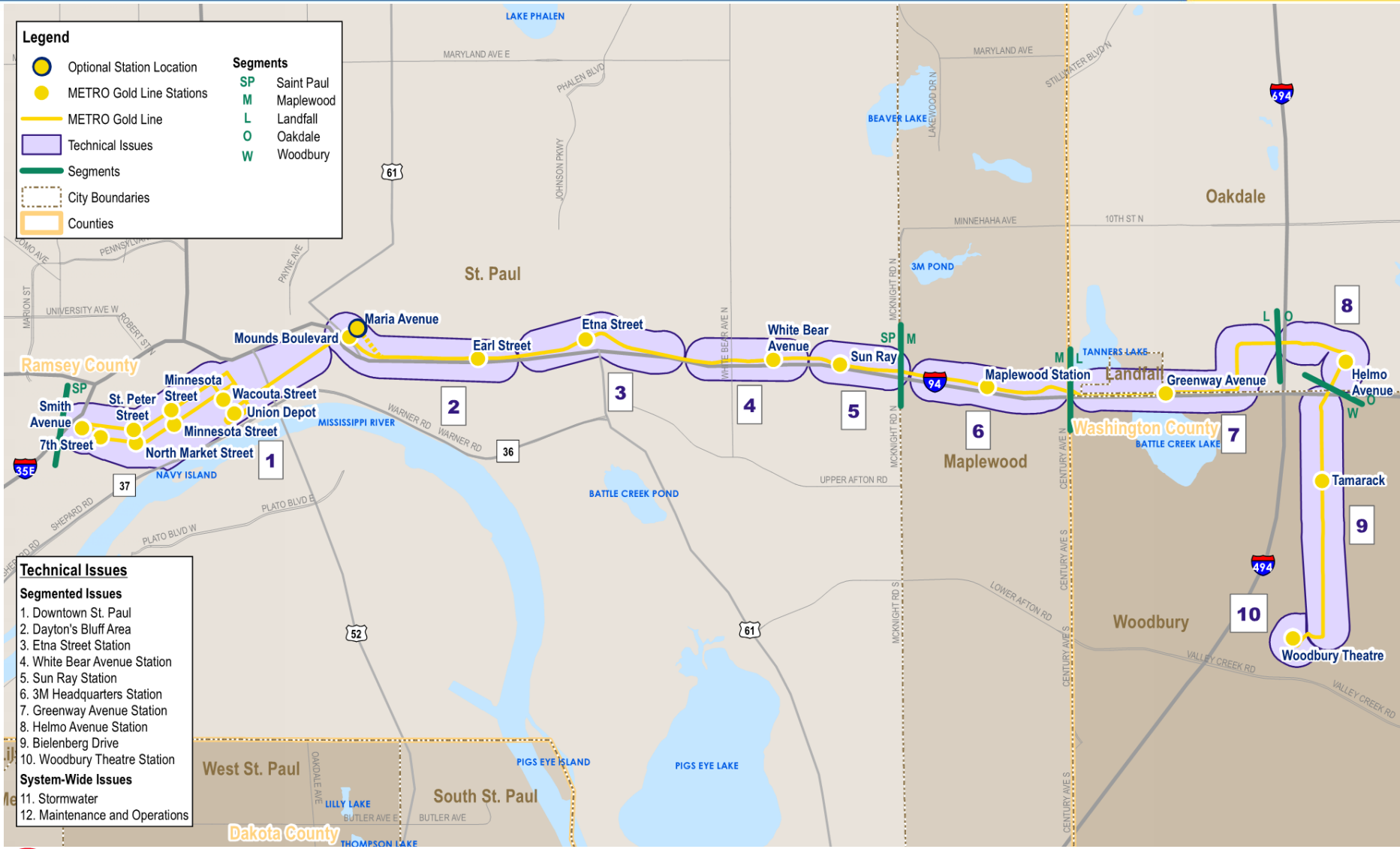


Legend

- Optional Station Location
- METRO Gold Line Stations
- METRO Gold Line
- Technical Issues
- Segments
- City Boundaries
- Counties

Segments

- SP Saint Paul
- M Maplewood
- L Landfall
- O Oakdale
- W Woodbury



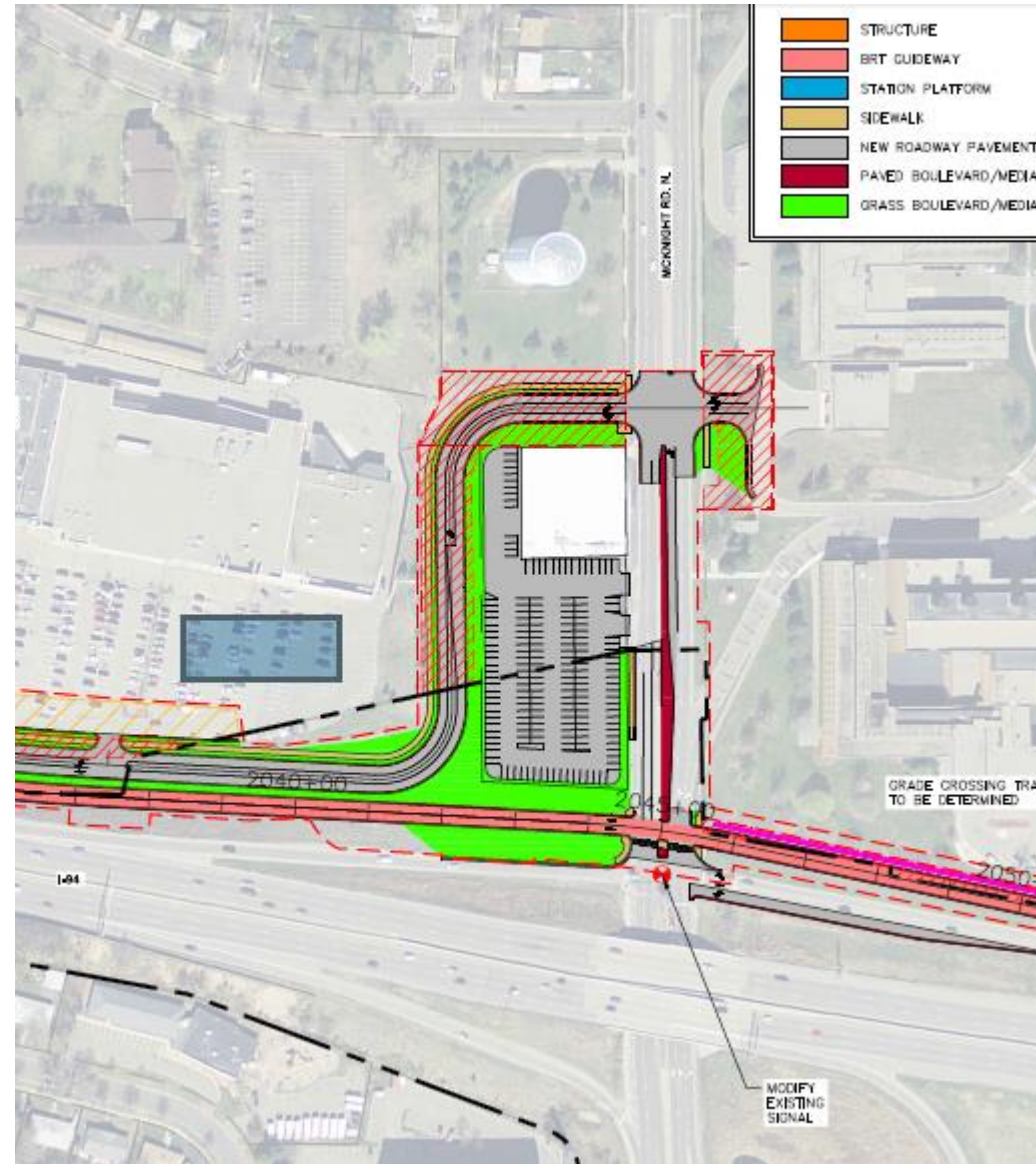
- Technical Issues**
- Segmented Issues**
1. Downtown St. Paul
 2. Dayton's Bluff Area
 3. Etna Street Station
 4. White Bear Avenue Station
 5. Sun Ray Station
 6. 3M Headquarters Station
 7. Greenway Avenue Station
 8. Helmo Avenue Station
 9. Bielenberg Drive
 10. Woodbury Theatre Station
- System-Wide Issues**
11. Stormwater
 12. Maintenance and Operations



- Issues Resolution Teams
 - Smaller groups of technical staff from cities, counties, MnDOT, Metro Transit, and Gold Line Project Office
 - Meeting regularly since March
 - Focus on key issues geographically



- McKnight 1% Design
 - Significant infrastructure improvements to construct frontage road behind Sun Ray Lanes
 - Significant impacts to Sun Ray Lanes during construction
 - Limits future McKnight traffic/capacity solutions
 - Greater parking impacts
 - Limits future redevelopment opportunities





Bridge over McKnight Option



- IRT Preferred Solution: **Bridge over McKnight**
 - Avoids impacts to Sun Ray Lanes
 - Provides maximum flexibility for future McKnight improvements
 - Provides maximum flexibility for Sun Ray redevelopment efforts
 - BRT travel time advantage
 - Cost neutral change
- Other scope discussions for McKnight
 - Ped connections
 - Review of environmental impacts

- Next Steps
 - Present all IRT recommendations to the Technical Advisory Committee (TAC)
 - Seek public input and feedback
 - Present recommendations to the Community and Business Advisory Committee (CBAC)
 - Incorporate any final questions and suggestions
 - Preview corridor-wide environmental scope recommendations to the CMC at August 2 meeting
 - Review proposed modifications to 1% design

Stakeholder and Public Engagement Process

- Open Houses: corridor-wide design updates and input
 - Open House – West
 - July 17 from 5:00-7:00 pm
 - Grace Lutheran Church: 1730 Old Hudson R, St. Paul
 - Open House – East
 - July 18 from 5:00-7:00 pm
 - Guardian Angels Catholic Church: 8260 4th St. N, Oakdale
- Geographically Targeted Outreach: areas where input is needed on design options
 - Public meetings
 - Direct mailing
 - Door knocking
 - Pop-up events

Right of Entry Process Overview

- Right of Entry (ROE) – The right to go onto another’s property without committing trespass.
- ROE is required for project related environmental analysis and design/engineering.
- Metropolitan Council has authority for ROE under Minnesota Statutes 473.129 and 117.041
- 4 step process for ROE

Step 1: ROE Request for Fieldwork

- ### Fieldwork Type 1
- Land surveys, data collection, or field observation
 - No physical disturbance to property
 - No installation of equipment

- ### Fieldwork Type 2
- Archaeological survey, wetland delineation, and geotechnical boring
 - Physical disturbance to property required
 - Temporary installation of equipment



Survey for engineering



Shovel testing for Archaeological survey

Geotechnical Boring

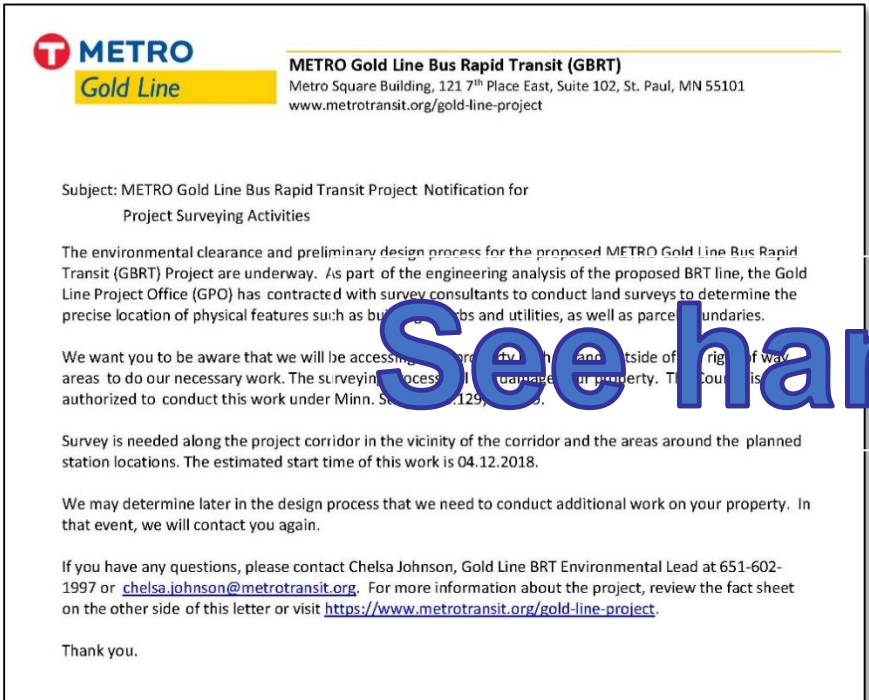




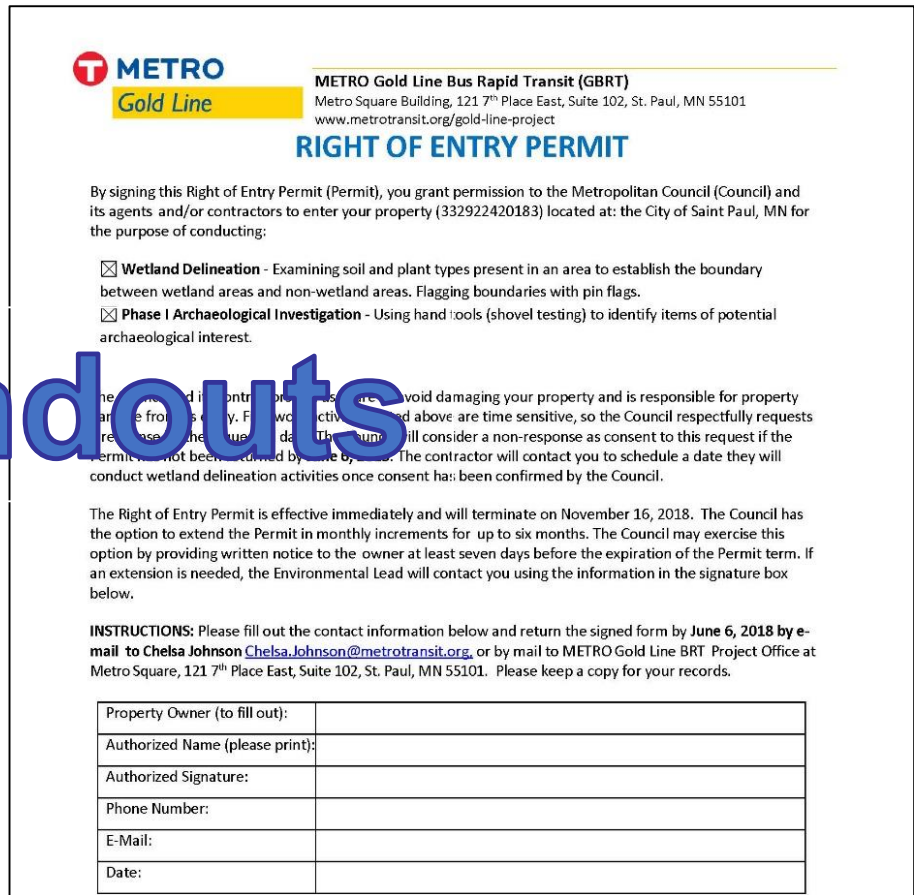
Step 2: Property Owner Notification

- Fieldwork Type 1**
- Fieldwork notification letter mailed 3 weeks prior to fieldwork

- Fieldwork Type 2**
- Fieldwork ROE Letter mailed with request for response in 3 weeks



Notification Letter



ROE Letter

See handouts



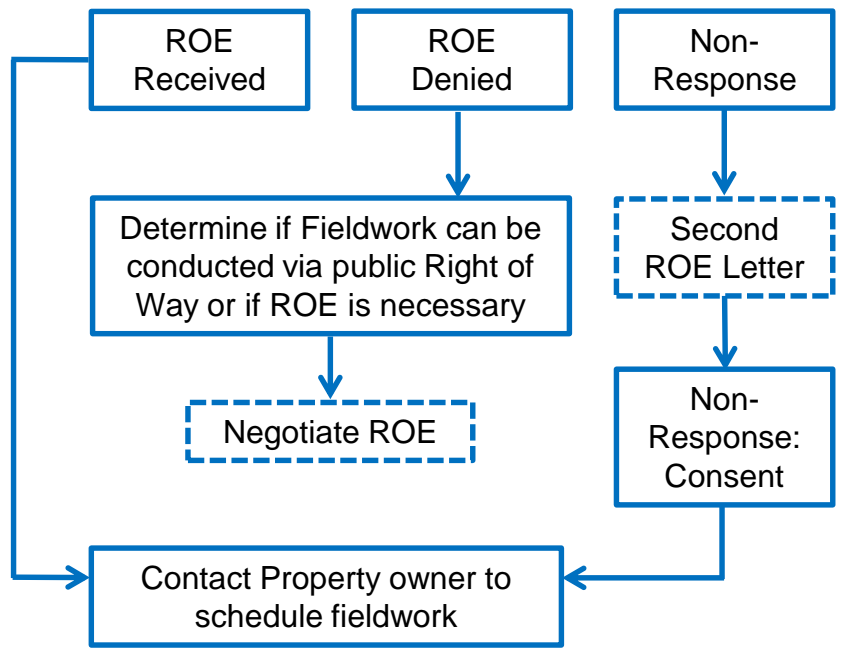
Step 3: Response to Notification Letters

Fieldwork Type 1



No Response required

Fieldwork Type 2



Step 4: Conduct Fieldwork

Fieldwork Type 1

- Conduct fieldwork

Fieldwork Type 2

- Contact Owner to schedule fieldwork



Survey for engineering



Wetland delineation

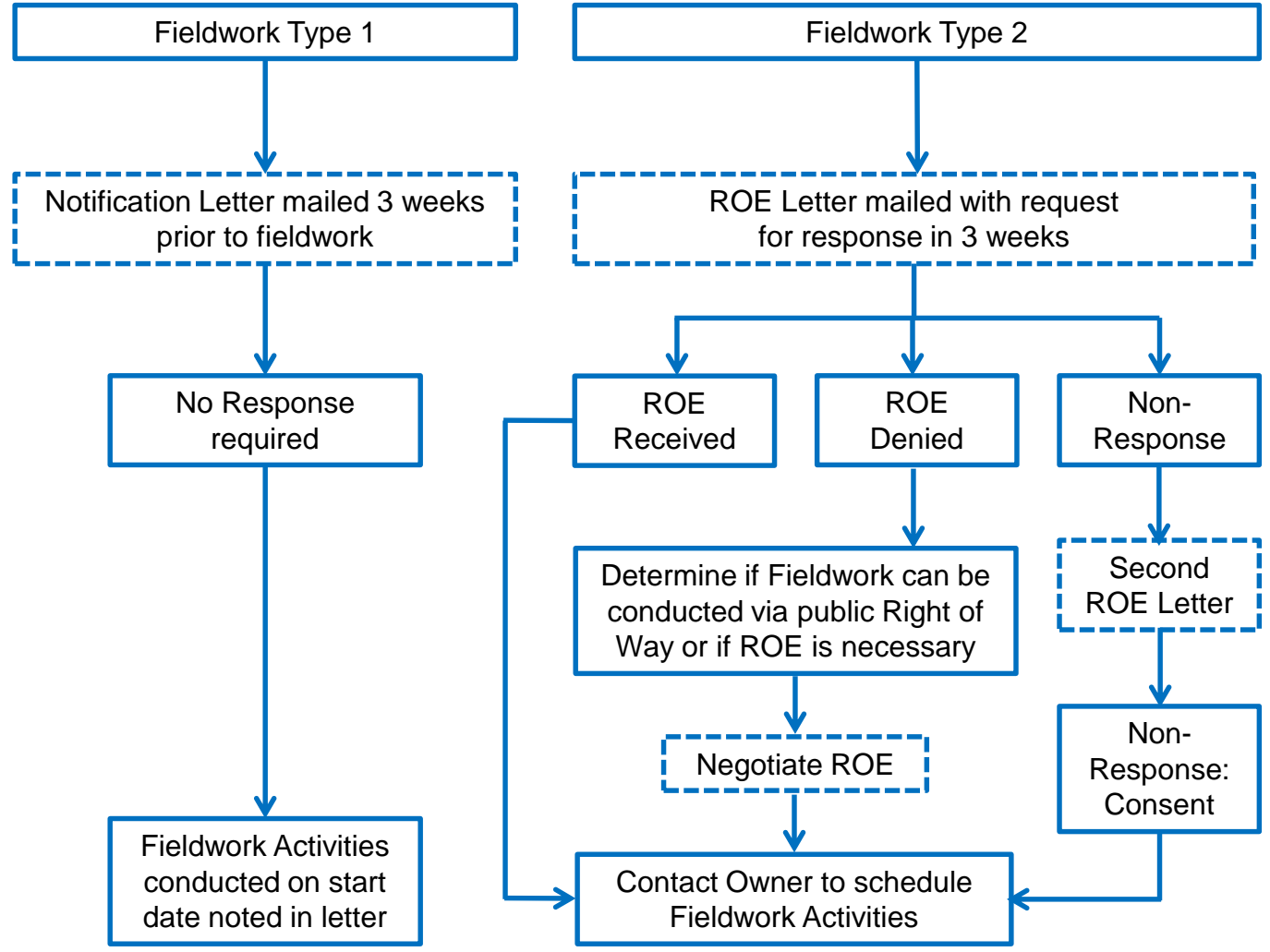


Survey equipment

Right of Entry Process



- Step 1: ROE Request for Fieldwork
- Step 2: Property Owner Notification
- Step 3: Response to Notification Letters
- Step 4: Conduct Fieldwork Activities



- - - Indicates ROE Notification Activity

- Next scheduled CMC meeting is July 5
 - Recommend cancellation
 - Focus on public outreach

- Next CMC meeting is Aug 2
 - Preview environmental scope recommendations



For more information:
www.metrotransit.org/gold-line-project