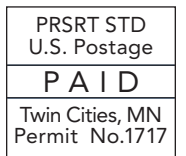


## What to expect from construction

- Construction at intersections with a new station varies by location but may include some utility work, new road, sidewalk, traffic signal changes, shelters and other station features.
- Impacts may include intersection closure up to 1 month and/or lane restrictions up to 6 months.
- Sidewalks will remain open on at least one side of the road and pedestrian access will be maintained to homes and businesses.
- Crews will install underground conduit for a fiber optic network along the length of the whole corridor to link technology at stations.



### PROJECT CONTACT:

Cody Olson  
*Outreach Coordinator*  
cody.olson@metrotransit.org  
612-248-0642



612-568-1038  
[metrotransit.org/d-line-project](http://metrotransit.org/d-line-project)

# CONSTRUCTION OF THE METRO D LINE

BUS RAPID TRANSIT STARTS IN APRIL

